



Guide Price
£525,000

Freehold

2x  1x  1x 

**The Bungalows, Forest
Road, Ilford, Essex, IG6**

OVER 60?

Secure this property
for up to **59% less!**

 **DOUGLAS
ALLEN**
Helping you move forwards



Main features

- Semi detached bungalow with no onward chain
- Double garage and off street parking
- Extended open plan lounge/dining area/kitchen
- Landscaped rear garden backing onto fields
- Within close proximity to Fairlop Central Line station
- Close to Fairlop waters and local amenities

Accommodation

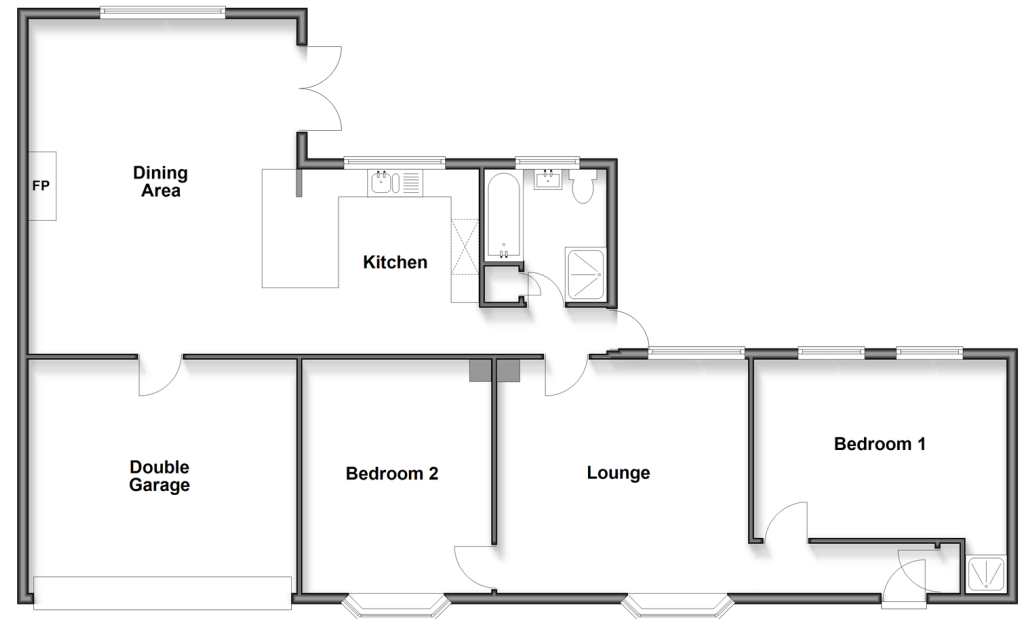
GROUND FLOOR

Entrance Hall
 Lounge : 20'0 x 16'4 (6.10m x 4.98m)
 Dining Area: 14'9 x 14'6 (4.50m x 4.42m)
 Kitchen: 11'5 x 10'8 (3.48m x 3.25m)
 Bedroom 1: 14'9 x 10'7 (4.50m x 3.23m)
 Bedroom 2 : 14'6 x 11'2 (4.42m x 3.41m)
 Bathroom

OUTSIDE

Garage
 Off Street Parking
 Rear Garden

Ground Floor
 Approx. 124.8 sq. metres (1343.1 sq. feet)



Call Barkingside - 020 8551 4025 ■ douglasallen.co.uk

■ A private rental licensing scheme applies to some properties in this area, please check with the Local Authority before proceeding

■ Through a Homewise Home For Life Plan people aged 60+ can secure this property for up to 59% less, by purchasing a Lifetime Lease



50216387/20260411/CP1/RUM