



17 Netherton Place

Whitburn, Bathgate, EH47 8JG



Property Summary

Set in an established residential area of Whitburn, this detached bungalow is close to local shops, supermarkets, schools, parks, and everyday amenities, whilst remaining within commuting distance of Edinburgh and Glasgow. 17 Netherton Place is complemented by beautifully maintained mature gardens, featuring a wooden patio and pergola with lighting, a greenhouse, and peaceful outdoor seating areas ideal for relaxing or entertaining. Generous interiors include a triple-aspect sunroom with garden access, a spacious living room, and an open-plan breakfasting kitchen and dining area, as well as a private drive and garage parking.

Extras: All fitted floor and window coverings, light fittings, and integrated appliances are included in the sale.

Property Features

- Detached bungalow in Whitburn
- Established residential suburb (include nearby amenities)
- Vestibule and hall with storage and WC
- Generous living room
- Open-plan breakfasting kitchen/dining room and utility room
- Triple-aspect sunroom with garden access
- Two wardrobed double bedrooms
- Versatile third bedroom with a wardrobe
- Family bathroom with a bidet
- Well-kept mature gardens with a patio/pergola and greenhouse
- Private drive and garage
- Double glazing throughout
- EPC Rating - D





Two wardrobed double bedrooms & a versatile third bedroom with a wardrobe





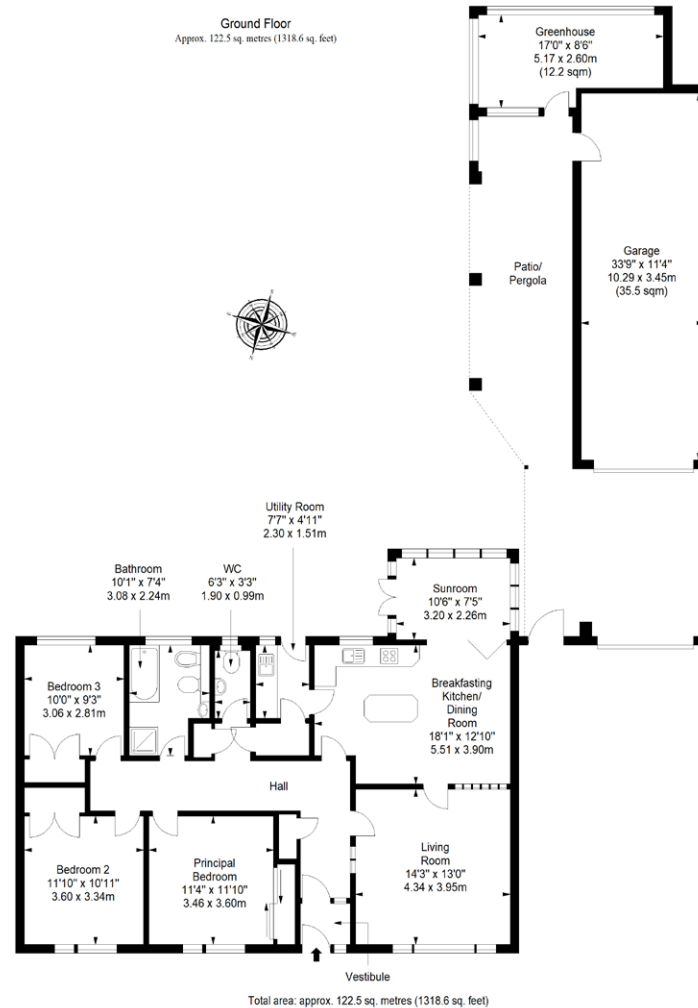


Well-kept mature gardens
with a patio/pergola and
greenhouse





Floorplan



All Enquiries to our Property Department:

01506 815832 | afton.henderson@sneddons-ssc.co.uk | www.sneddonmorrison.co.uk
14 East Main Street, Whitburn, West Lothian EH47 ORB

IMPORTANT: The selling agents for themselves and for the sellers of the above property give notice that these particulars are for guidance only and their accuracy is not guaranteed. These particulars will not form part of any contract and interested parties should satisfy themselves in all aspects prior to submitting offers. The sellers do not bind themselves to accept the highest offer. S1106