



31 Draycott Avenue | | LONDON | SW3 3BS

£2,291 Per month

**ESON2**  
REAL ESTATE

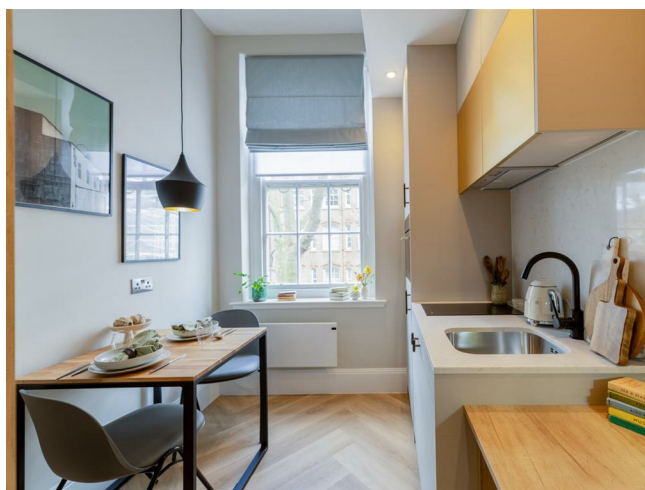
## Key features

- Open-Plan Living
- High-End Kitchen
- Luxurious Bathroom
- Smart Design
- On-site Gym
- Workspace Facilities
- 24/7 Security

## Description

A newly refurbished studio apartment in Chelsea SW3 with a smart open-plan layout, premium integrated appliances, and a modern bathroom with a raised base shower. Residents benefit from 24-hour gym access, co-working space, secure entry, and CCTV. Ideally located near King's Road and Knightsbridge, close to shops, cafés, and transport links.

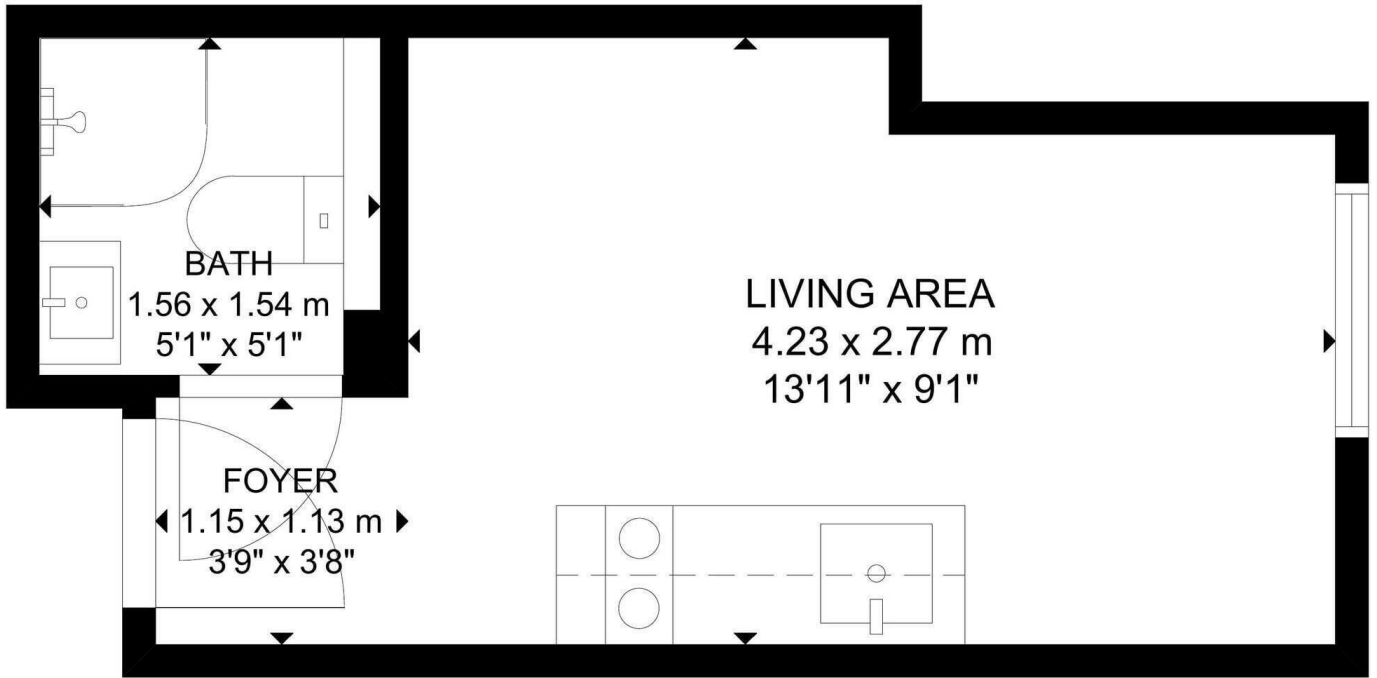
## Directions



A stylish newly renovated studio apartment located in the prestigious Chelsea (SW3) area, designed to maximise space, comfort, and natural light.

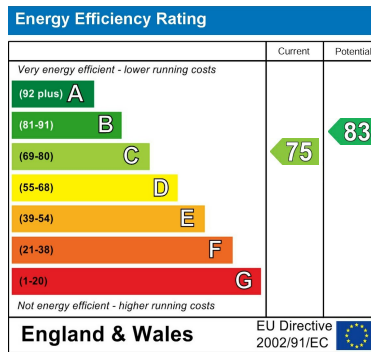


# Floor plans



SECOND FLOOR

GROSS INTERNAL AREA  
TOTAL: 15 m<sup>2</sup>/159 sq ft  
SECOND FLOOR: 15 m<sup>2</sup>/159 sq ft  
SIZE AND DIMENSIONS ARE APPROXIMATE, ACTUAL MAY VARY.



Council Tax Band      EPC Rating C



301 Michelin House 81 Fulham road  
London  
Greater London  
SW3 6RD  
07920 257649  
fayeel@eson2.co.uk  
www.eson2.co.uk