



## Fairfield East, KT1

£475,000

An attractive two double bedroom Victorian semi-detached cottage, perfectly positioned in a quiet and convenient location close to Kingston town centre. The property beautifully combines period charm with modern touches, while still offering excellent potential for new owners to personalise and create a truly characterful home.

Fairfield East is a quiet Cul-de-Sac located just off Fairfield recreational park. The location could not be any more convenient being less than 500 yards to the vibrant Kingston town centre with its array of shops, bars and restaurants.

### Features

- Semi Detached
- Victorian Cottage
- Two Reception Rooms
- Conservatory
- Stylish Garden
- Two Reception Rooms



## Fairfield East, KT1

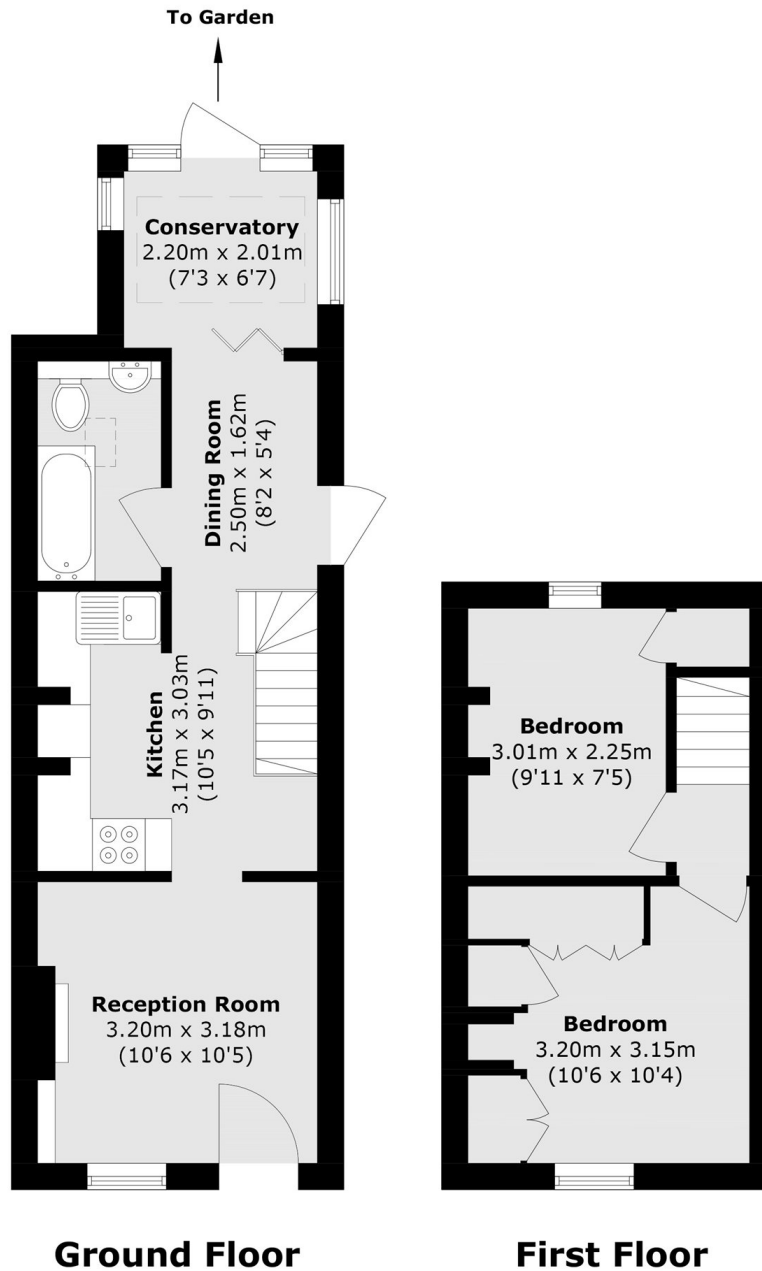
On the ground floor, the property features a front reception room with a large period fireplace and elegant herringbone style flooring, leading into the spacious kitchen, which opens into the dining area. A charming conservatory overlooks the rear garden, creating a bright and inviting space for relaxing or entertaining. Completing the ground floor is a modern family bathroom.

The first floor comprises two double bedrooms, both with built in storage.

Externally, the front of the property benefits from a small garden protected by a classic Victorian wall. To the rear, the contemporary garden is low maintenance and beautifully designed, featuring attractive stone paving and a modern horizontal thin slatted timber fencing that adds privacy and a stylish, contemporary touch.



# Fairfield East, Kingston Upon Thames, KT1



Total area (approx.): 53.9 sq. m (580.1 sq. ft)