



## Solomons Passage, SE15

### £825,000

Exclusive Incentives Available including - 5% Deposit Contribution Paid. \* Stamp Duty Paid (FTB rate): First-time buyers can enjoy further savings with Stamp Duty covered. Schedule a viewing today and secure your dream apartment!

Rye Parkside is a brand-new collection of 59 beautifully appointed apartments, set just moments from one of London's most beloved green spaces. Designed with modern living in mind, each home combines style and practicality. Interiors feature Quartz kitchen worktops, integrated appliances, terrazzo bathroom tiles and bespoke fitted wardrobes, offering a refined and contemporary finish throughout.

\*Please note: Only one promotional offer can be applied per purchase. Offers cannot be combined. Act fast-these exclusive offers are only available for a limited number of units.

This rare park-side setting provides a peaceful retreat from city life, while still being perfectly connected. Residents are within a mile of both Peckham Rye and Nunhead stations, ensuring effortless access across London.

### Features

- Gated Underground Parking \*
- Developer Incentives Available
- Three Bedrooms
- Two Bathrooms
- Large Balcony or Terrace
- Underfloor Heating
- German Appliances
- Quartz Worktops

# Solomons Passage, Peckham Rye, SE15

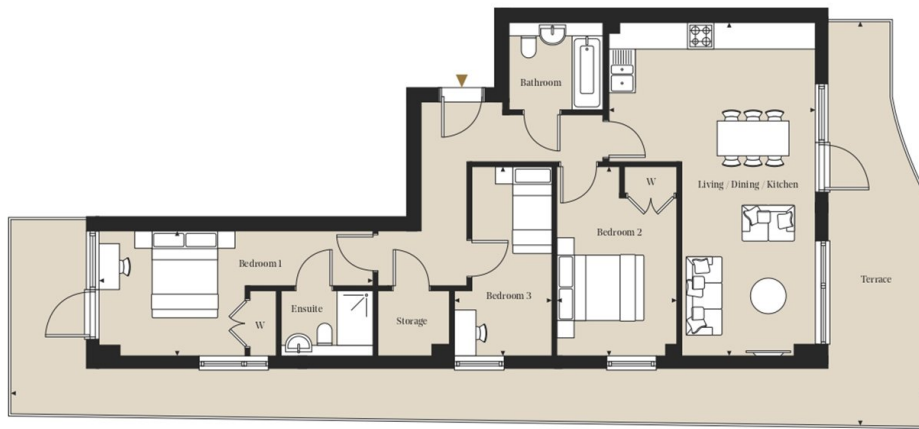
Rye Parkside/Block A

## Three Bedrooms

Apartment: A04

Floor: Ground

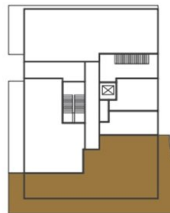
Total internal area  
86.7 sq m / 933.1 sq ft



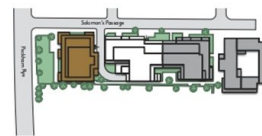
### Room Dimensions

Living/Dining/Kitchen	4.73m x 7.65m	15' 6" x 25' 1"
Bedroom 1	6.28m x 2.87m	20' 7" x 9' 5"
Bedroom 2	2.75m x 4.35m	9' 0" x 14' 3"
Bedroom 3	2.23m x 4.35m	7' 4" x 14' 3"

### Plot Locator (Ground floor)



### Siteplan



► Measurement Points W Wardrobe

All measurements are approximate and are taken at maximum widths and lengths of rooms. Plans are drawn to scale at a design phase and may vary during build. Kitchens and wardrobes sizes and layouts may differ to those shown. Furniture layouts are indicative only (where they appear). All total sqft and sqm are gross measurements. Window styles and positions may vary. Floorplans are not to scale.