



18 Eva Street

, Leigh, WN7 5EZ

Offers in excess of £150,000

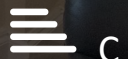
JonesPottsTaylor are delighted to present FOR SALE this three bedroom semi-detached property. Situated in the residential location in Leigh, close to schools, shops, amenities and transport links. The property briefly comprises of; entrance hallway, living room, a separate kitchen / dining room and a further family bathroom with three piece suite. To the first floor are two double bedrooms and a single bedroom. Outside to the front is an enclosed garden and driveway, whilst to the rear is a large, enclosed low maintenance garden.

Viewings for this property are a must, it offers a generous outside space.

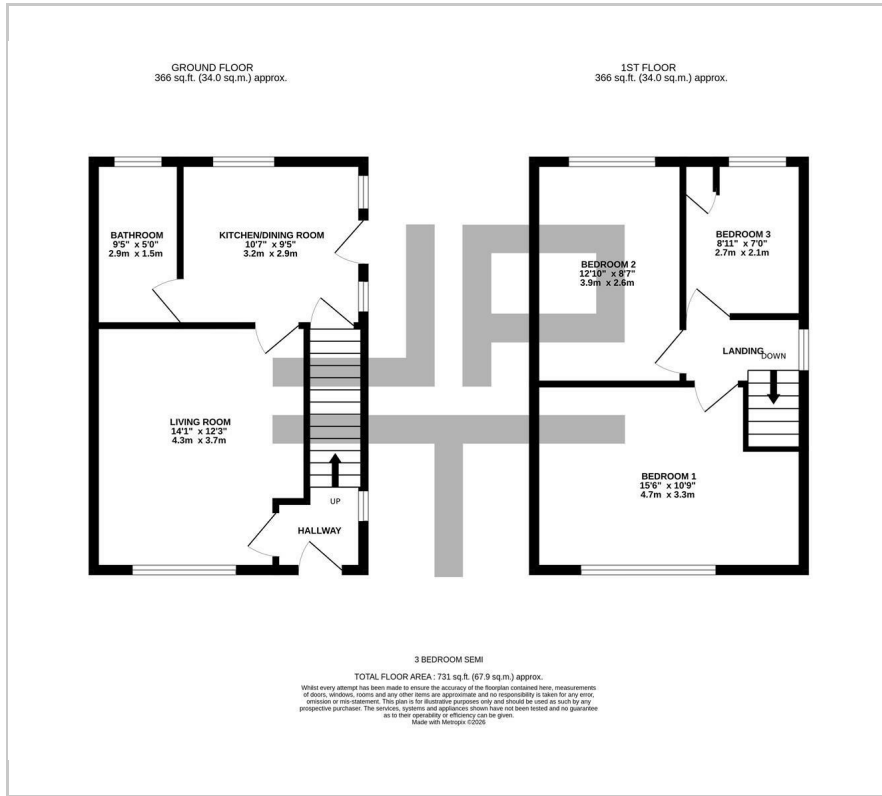
Viewing

Please contact our Jones Potts Taylor Office on 01942 368600 if you wish to arrange a viewing appointment for this property or require further information.

- No Onward Chain
- Off Road Parking
- Tenure - Freehold
- Large Private Rear Garden
- Gas Central Heating
- UPVC Windows And Doors



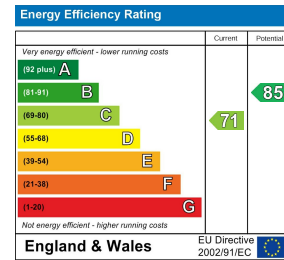
Floor Plan



Area Map



Energy Efficiency Graph



These particulars, whilst believed to be accurate are set out as a general outline only for guidance and do not constitute any part of an offer or contract. Intending purchasers should not rely on them as statements of representation of fact, but must satisfy themselves by inspection or otherwise as to their accuracy. No person in this firm's employment has the authority to make or give any representation or warranty in respect of the property.

6-8 Twist Lane, Leigh, Greater Manchester, WN7 4DA

Tel: 01942 368600 Email: hello@jonespottstaylor.co.uk jonespottstaylor.co.uk