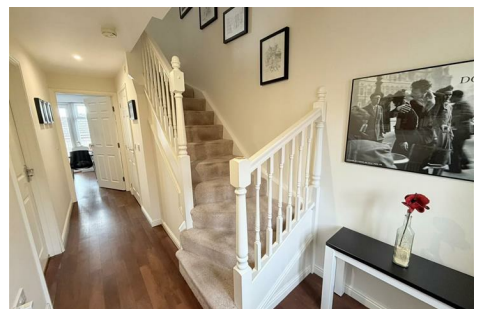


# DAWSONS

Property Professionals since 1925

18/20 STAMFORD STREET STALYBRIDGE CHESHIRE TEL: 0161 338 2292

Website: [www.wcdawson.com](http://www.wcdawson.com) Email: [reception@wcdawson.com](mailto:reception@wcdawson.com)



## The Green, Hyde, SK14 4GW

Dawsons are pleased to bring to market this superbly maintained and presented, three storey, four double bedded, semi detached property which simply must be viewed internally to be fully appreciated. The property offers well proportioned accommodation, has a good sized garden plot and is, in our opinion, ideally suited to a growing family.

The property is located within a popular residential estate which has good access to all local amenities and enjoys good commuter links as well as being within easy reach of several local countryside walks. Local junior and high schools are also within easy reach.

**Price £300,000**



**CHARTERED SURVEYORS, ESTATE AGENTS  
& PROPERTY MANAGEMENT SPECIALISTS**



# The Green, Hyde, SK14 4GW

- Well Proportioned 3 Storey Family Home
- Popular Residential Location
- 4 Double Bedrooms (Master having re-fitted En-suite)
- Good Access to all Local Amenities
- Good Sized Rear Garden
- Garage and Driveway

## Ground floor

### Hallway

Double glazed contemporary style security external door, central heating radiator, doors leading to:

### Kitchen/Diner

16' 12 (4.88m x 3.66m)

uPVC double glazed windows, patio doors leading to rear garden, space for fridge freezer, integrated cooker, gas hob, extractor fan, wall mounted units, dishwasher, stainless steel sink with mixer tap, draining board, part tiled, dining table.

### Garage

### First floor:

### Reception room

16' x 12' (4.88m x 3.66m )

uPVC double glazed windows, central heating radiator.

### Bedroom 3

10' x 10' (3.05m x 3.05m )

uPVC double glazed window, central heating radiator.

### Bathroom

10' x 6' (3.05m x 1.83m )

Panelled bath, part tiled, glass shower screen, wash hand basin, low level WC, wall mounted mirror, central heating radiator.

### Second floor:

### Bedroom 1

16' x 12' (4.88m x 3.66m )

uPVC double glazed windows, central heating radiator.

### En suite

6' x 5' (1.83m x 1.52m )

Walk in shower, low level WC, wash hand basin, part tiled.

### Bedroom 2

9' x 12' (2.74m x 3.66m )

uPVC double glazed window, central heating radiator.

### Bedroom 4

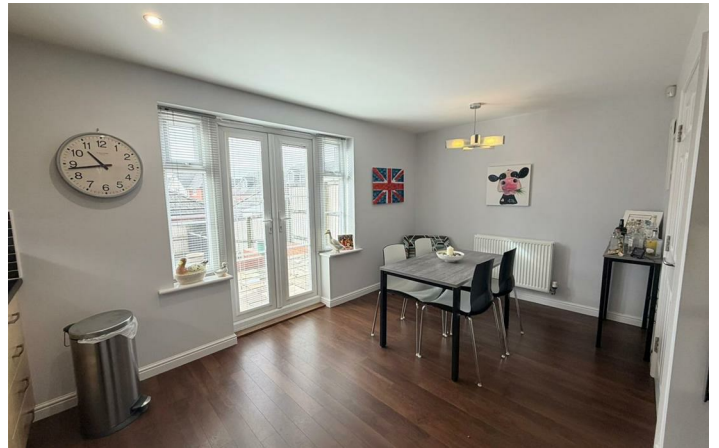
7' x 12 (2.13m x 3.66m)

uPVC double glazed window, central heating radiator.

### Externally:

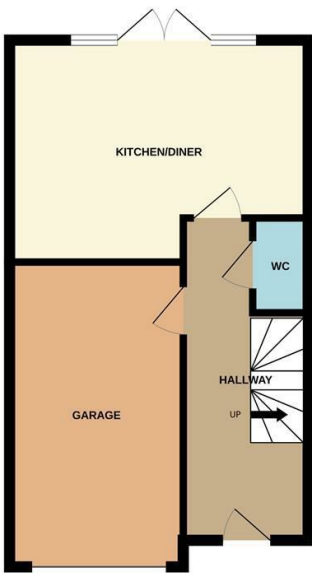


## Directions

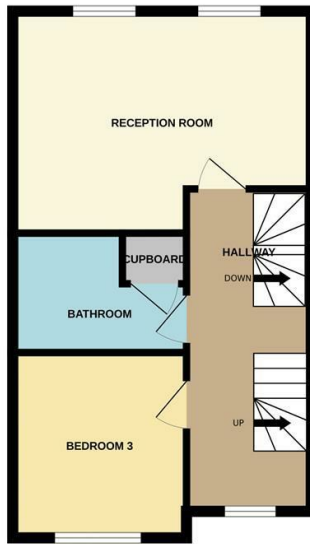


# Floor Plan

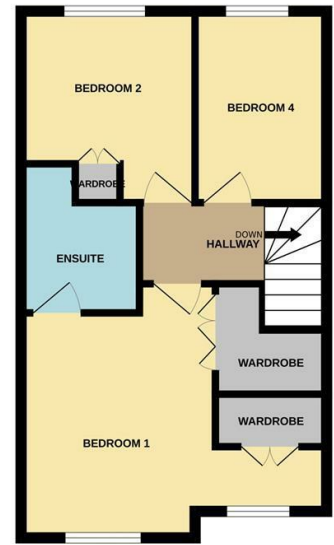
GROUND FLOOR



1ST FLOOR



2ND FLOOR



Whilst every attempt has been made to ensure the accuracy of the floorplan contained here, measurements of doors, windows, rooms and any other items are approximate and no responsibility is taken for any error, omission or mis-statement. This plan is for illustrative purposes only and should be used as such by any prospective purchaser. The services, systems and appliances shown have not been tested and no guarantee as to their operability or efficiency can be given.  
Made with Metropix ©2025

These particulars, whilst believed to be accurate are set out as a general outline only for guidance and do not constitute any part of an offer or contract. Intending purchasers should not rely on them as statements of representation of fact, but must satisfy themselves by inspection or otherwise as to their accuracy. No person in this firm's employment has the authority to make or give any representation or warranty in respect of the property.

