



## Adams Close, KT5

£399,950

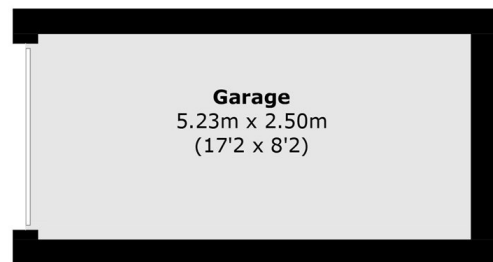
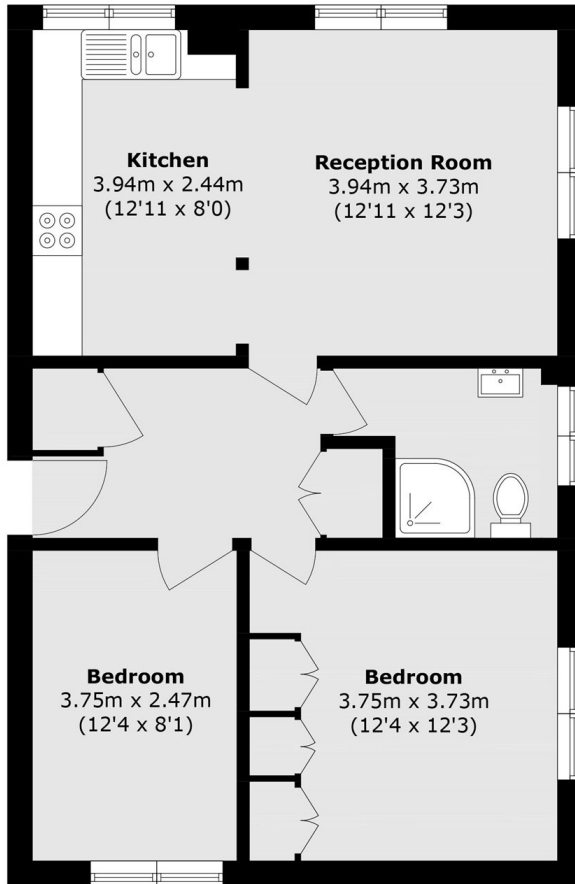
This is a well proportioned two bedroom apartment situated in a sought after area in Surbiton. This immaculately presented flat offers an entrance hall with generous storage, a spacious open plan kitchen/dining/reception room, two double bedrooms and a modern bathroom. There is also the benefit of a garage, on street parking, no onward chain and a new lease upon completion.

Surbiton town centre and mainline train station is within 0.7 Miles as well as the shops, bars and amenities of Victoria Road. There are a variety of open green spaces within 500 yards and the A3 is 1 mile away.

### Features

- Two Double Bedrooms
- Immaculate Condition
- Garage
- New Lease Upon Completion
- No Onward Chain
- Open Plan Kitchen/Diner

# Adams Close, Surbiton, KT5



**Not In Actual  
Orientation/Location**

Total area (approx.): 63.6 sq. m (684.5 sq. ft)  
Garage area (approx.): 13.0 sq. m (139.9 sq. ft)