



## Palace Road, SW2

£550,000

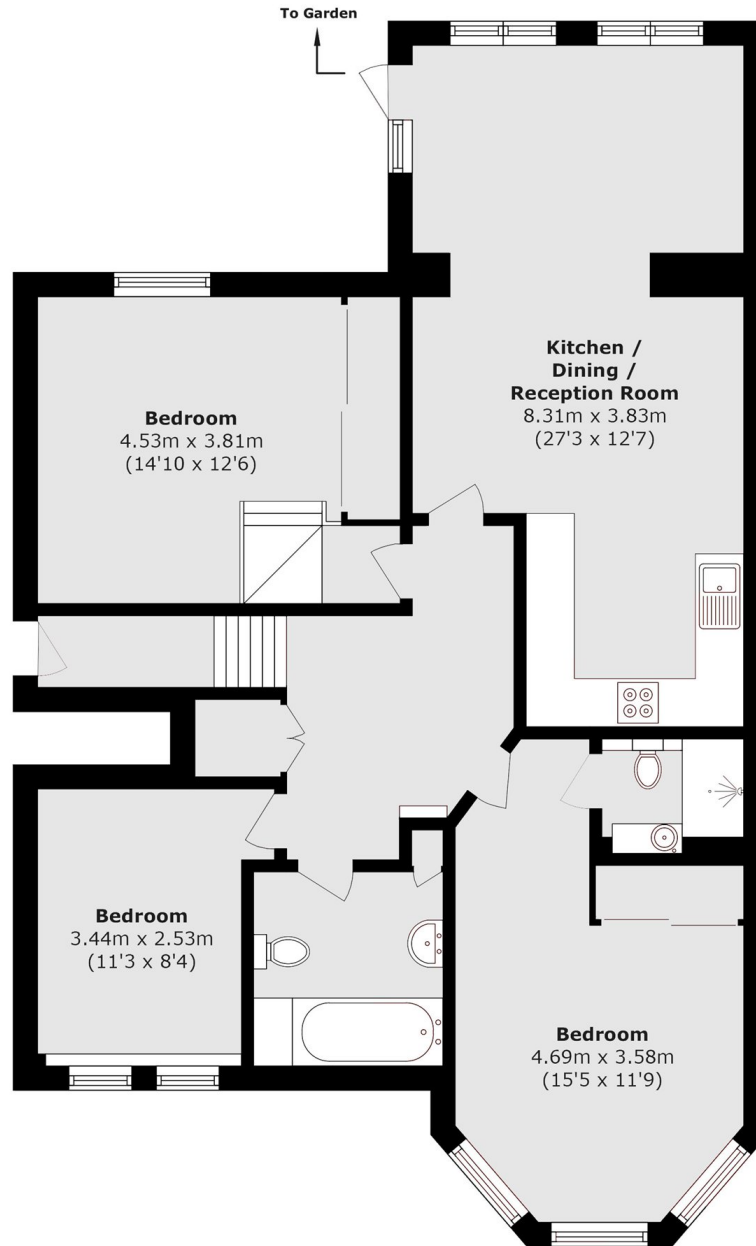
This attractive period property offers over 1,067 sq ft of well-proportioned living space, featuring three spacious bedrooms and two bathrooms. The home benefits from a private garden, providing an ideal outdoor retreat, and is offered to the market with no onward chain.

Palace Road is a highly sought-after location, ideally positioned moments from Tulse Hill station, offering direct rail links to London Bridge, as well as frequent bus services to Brixton and Clapham. The property is perfectly placed to enjoy a wide selection of bars, restaurants and shops along Norwood Road.

### Features

- Three Bedrooms
- Private Garden
- No Onward Chain
- Period Property
- Over 1,067 Sq Ft
- Two Bathrooms

# Palace Road, London, SW2



Total area (approx.): 99.2 sq. m (1067.7 sq. ft)