



Offers Over £325,000
Granville Park SE13 7DX.

DAVID GREENSLADE
exp

02080 500 252 or 07568 567 518
david.greenslade@exp.uk.com
<https://davidgreenslade.exp.uk.com>



Bedrooms: 1 | Bathrooms: 1 | Receptions: 1

Please quote Ref DG0640. Guide Price £325,000 - £350,000. There once was an "ugly duckling" well a flat in this case! Offered Chain Free with a share of the freehold and located on Granville Park, this Victorian one bedroom ground floor flat is waiting for its transformation! With soaring 11ft ceilings, grand sash windows, and beautiful period features, it is bursting with potential.

Right now, it needs a some love, but with vision and creativity, it could become something truly special. The spacious living room overlooks the communal garden, the large bedroom boasts a stunning bay window, there is a separate kitchen, again with views to the communal garden.

Adding to its appeal, the flat boasts a low monthly service charge, large separate storage room perfect for bikes or suitcases etc, access to a large communal garden and a sought-after address, this "duckling" is ready to shine. Could you be the one to turn it into a swan?

Greenwich Park & Blackheath Village - Take a leisurely stroll to the historic Greenwich Park or enjoy the boutique charm of Blackheath Village, with its selection of independent shops, cafés, and renowned restaurants like Côte Brasserie and Locale.

Lewisham Shopping & Dining - Just moments away, Lewisham town centre offers everything you need, from major retailers to quirky eateries like Sparrow and Good Hope Café.

Excellent Transport Links

Lewisham DLR & British Rail: 0.3 miles (12 mins to London Bridge, 18 mins to Cannon Street).

Blackheath Station: 0.65 miles (direct connections to the City).

North Greenwich (Jubilee Line): 2.46 miles.

Local Hotspots

Key Features:

Generously sized one-bedroom flat with high ceilings.

Low monthly service charge (Approx. £100 per month).

Share of Freehold - Lease has 85 years remaining.

Council Tax Band D

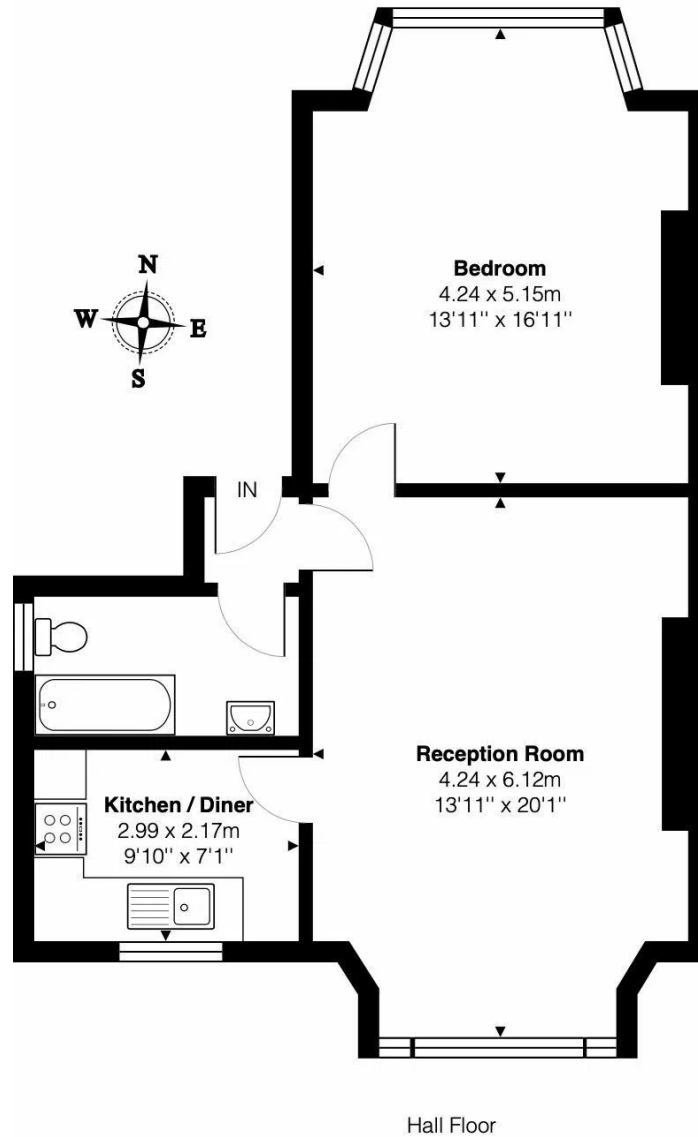
Whether you are an investor or a homeowner seeking a property brimming with potential in a vibrant yet tranquil location, this flat offers an unparalleled opportunity.





Granville Park, SE13

Total Area: 59.1 m² ... 636 ft²



This Floor plan is provided without warranty, of any kind.
Bespoke Plans disclaims any warranty including,
without limitation, satisfaction, quality or accuracy of any dimensions