



Grange Park, W5

£525,000

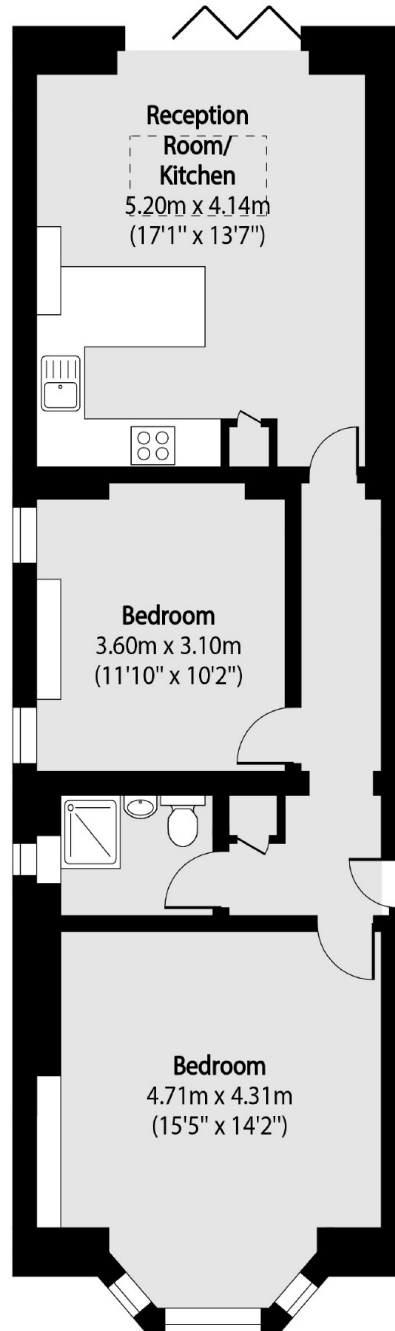
A two double bedroom ground floor period conversion with direct access to private decked area and communal garden beyond. In fantastic condition throughout, the property has high ceilings, newly renovated kitchen and bathroom, along with residents parking to the front.

Grange Park is a peaceful location just moments from the open space of Ealing Common. For the commuter, both Ealing Broadway (Elizabeth, Central and District) and Ealing Common (Piccadilly) stations are approximately half a mile away.

Features

- Two Bedrooms
- Newly Renovated
- Private Garden Section
- Residents Parking
- Close To Stations
- No Onward Chain

Grange Park, London, W5



Total area (approx): 62.12 sq m (669 sq. ft)