



Old Palace Lane, TW9

£1,850 Per calendar month

This one bedroom flat offers an open-plan living room with space for living and dining and high ceilings. There is a contemporary kitchen with fitted appliances, principle bedroom with ample storage and shower room.

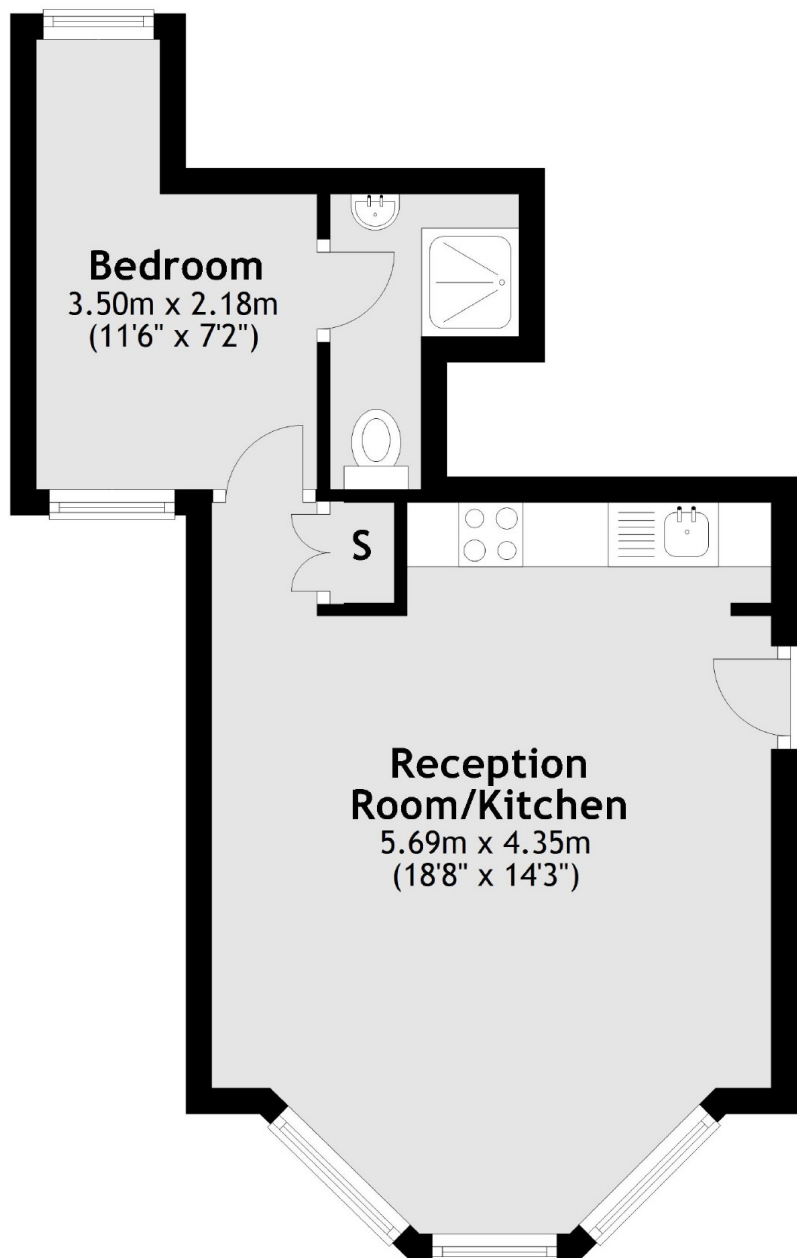
The property is located on a unique road that leads from Richmond Green down to the River Thames, moments from a range of shops, cafés, bars, restaurants and Richmond's mainline station and District Line service.

Features

- One Bedroom
- Raised Ground Floor
- High Ceilings
- Richmond Green
- Modern Kitchen
- Fitted Appliances

**Old Palace Lane,
Richmond, TW9**

Ground Floor



Total area: approx. 31.5 sq. metres (339.1 sq. feet)