





19 Coed Bach

Barry, Barry

Well presented three bedroom semi-detached property located in the highly sought after Highlight Park featuring a spacious lounge, open plan kitchen/diner, modern bathroom, driveway, garage and generous rear garden. No onward chain!

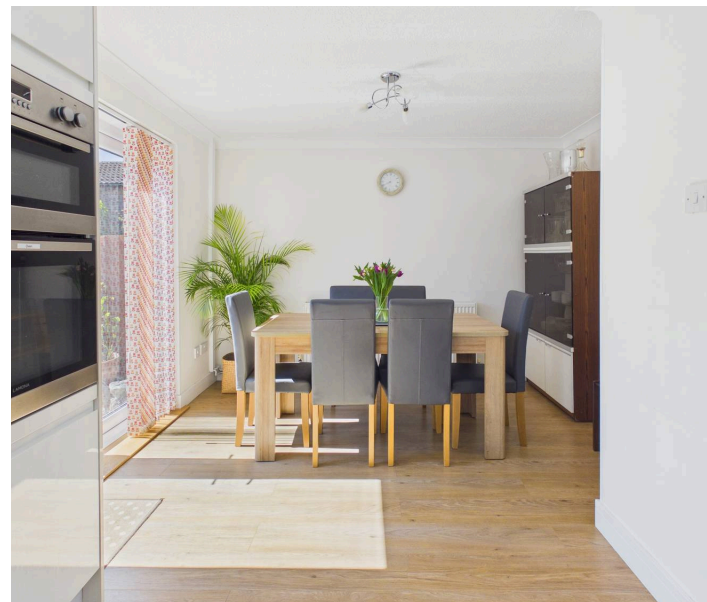
Council Tax band: D

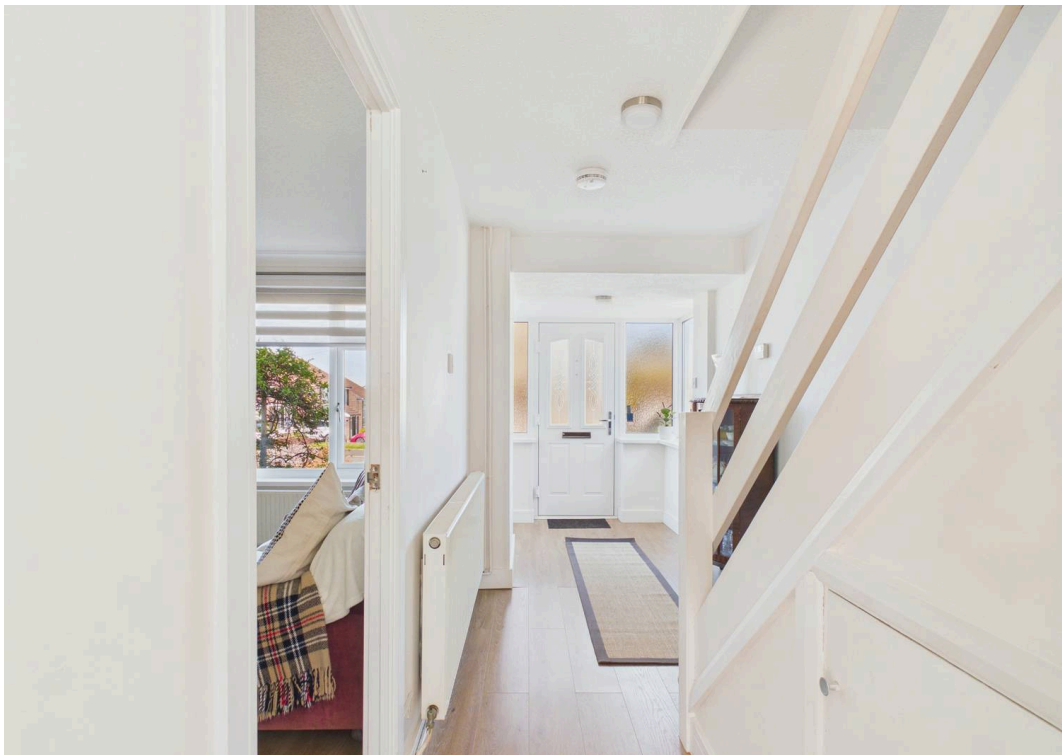
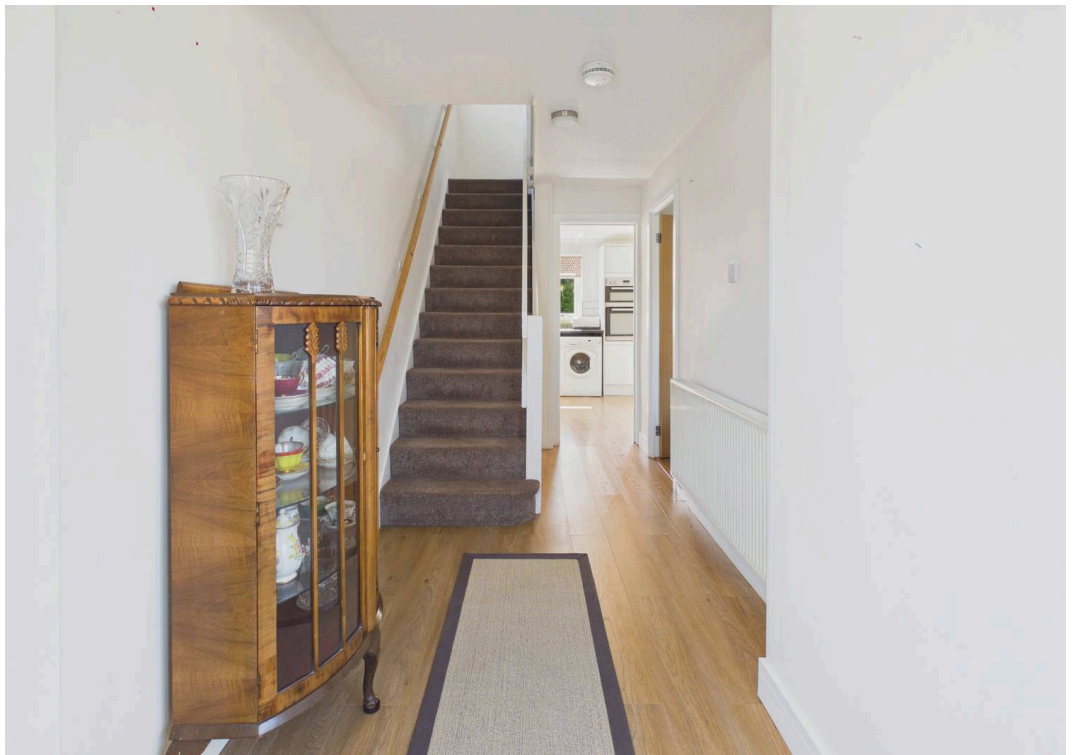
Tenure: Freehold

EPC Energy Efficiency Rating: D

EPC Environmental Impact Rating: D

- NO ONWARD CHAIN
- SOUGHT AFTER HIGHLIGHT PARK LOCATION
- THREE BEDROOM SEMI-DETACHED PROPERTY
- WELL PRESENTED THROUGHOUT
- OPEN PLAN KITCHEN/DINER
- COSY LOUNGE
- MODERN FIRST FLOOR BATHROOM
- DRIVEWAY AND DETACHED GARAGE
- GENEROUS FULLY ENCLOSED REAR GARDEN
- EPC TBC

















Approximate total area⁽¹⁾

39.9 m²
429 ft²

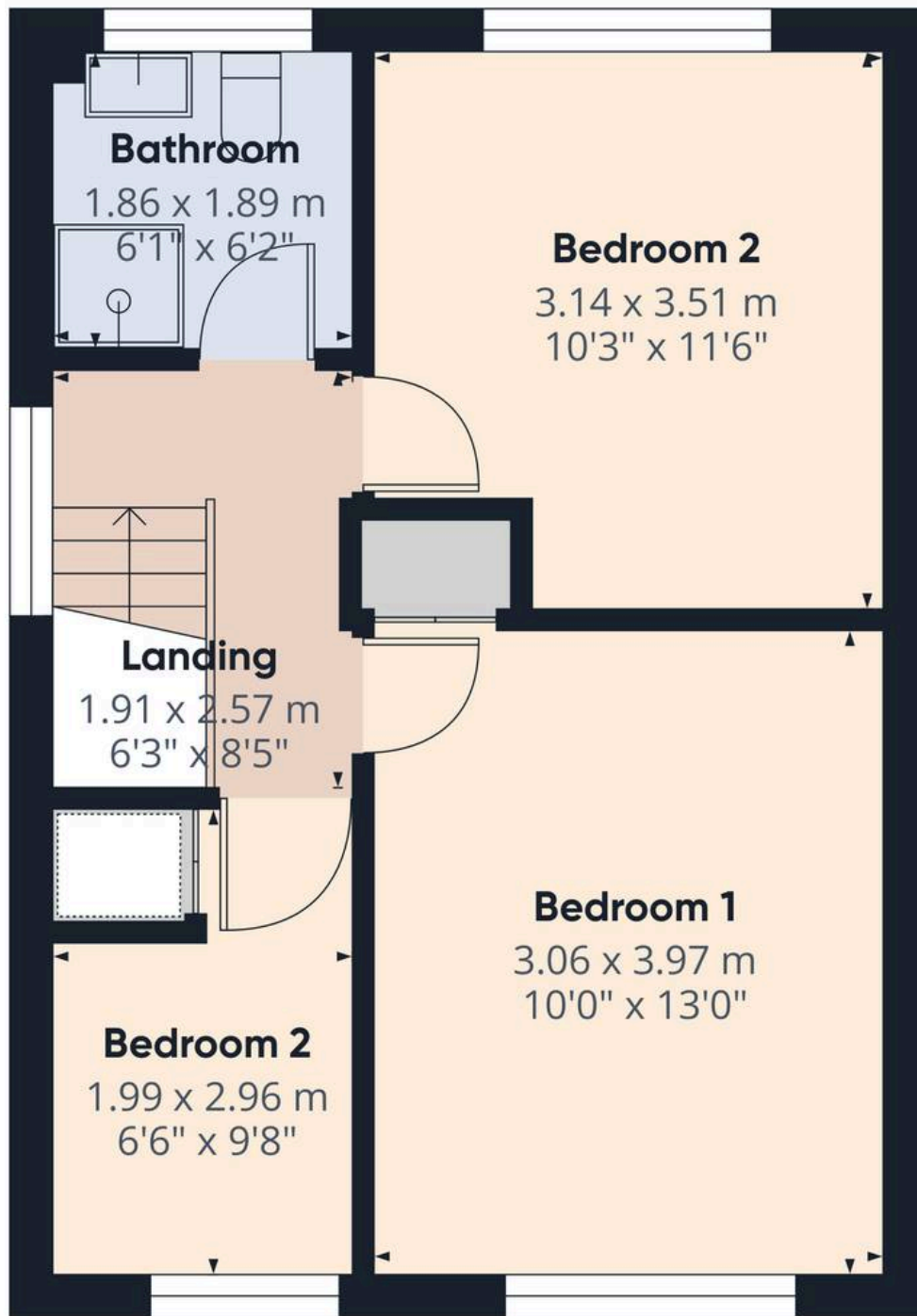
(1) Excluding balconies and terraces

Calculations reference the RICS IPMS 3C standard. Measurements are approximate and not to scale. This floor plan is intended for illustration only.

GIRAFFE360



Ground Floor



Approximate total area⁽¹⁾

34.8 m²
375 ft²

(1) Excluding balconies and terraces

Calculations reference the RICS IPMS 3C standard. Measurements are approximate and not to scale. This floor plan is intended for illustration only.

GIRAFFE360



First Floor



Chris Davies Estate Agents

Chris Davies Estate Agents, 24 High Street - CF62 7EA

01446 700007

barry@chris-davies.co.uk

www.chris-davies.co.uk/

HELPFUL INFORMATION - whilst we try to ensure our sales particulars are complete, accurate and reliable, if there is any point which is particularly important, please ask and we will be happy to check it, including specific information in respect of commuting links, surroundings, noise, views, or condition. For security purposes, applicants who wish to view will need to provide their name, address and telephone number. All measurements are approximate to the widest and longest points. Buyers are advised to instruct a solicitor to obtain verification of tenure and a surveyor to check that appliances, installations and services are in satisfactory condition.