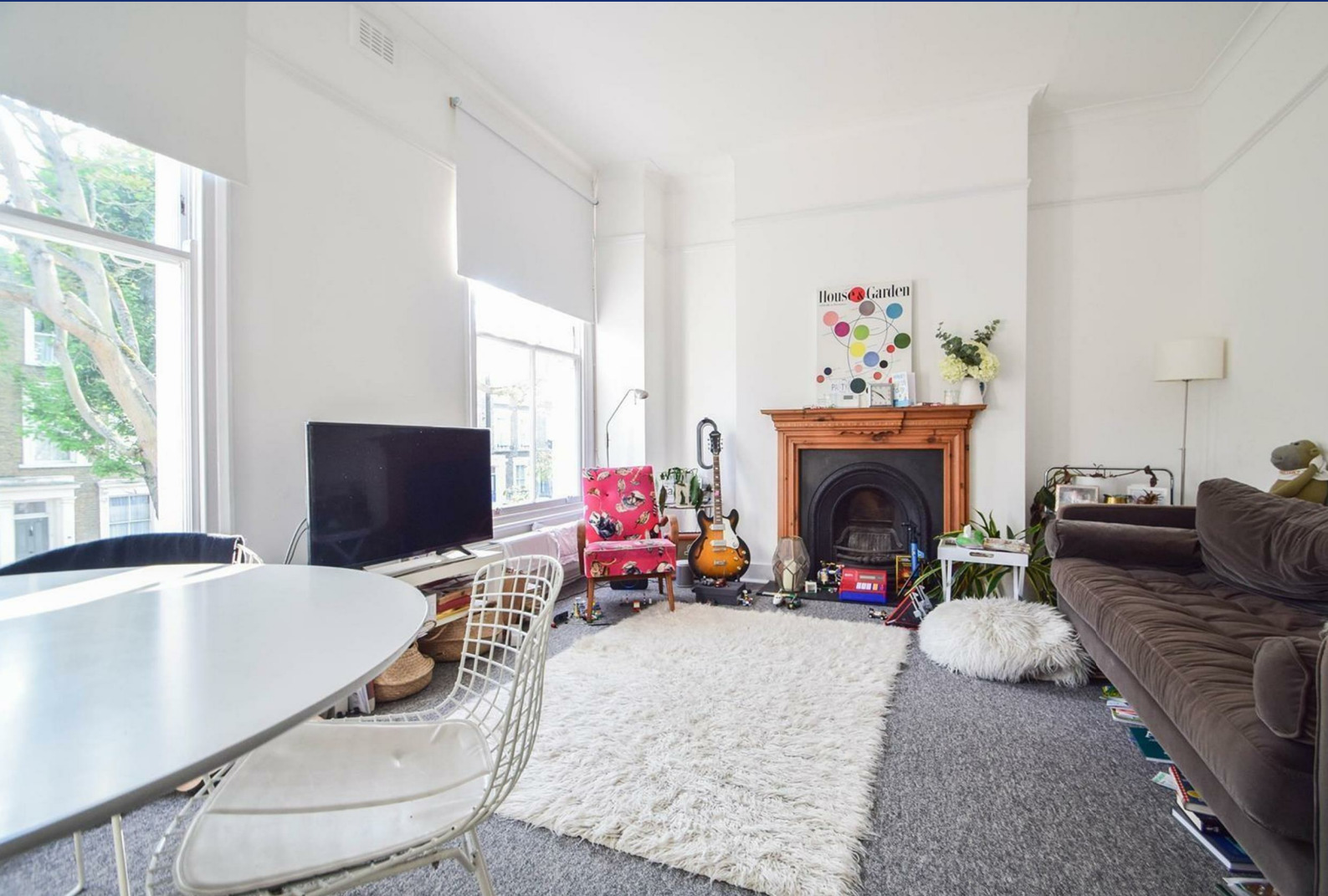


# HUNTERS®

HERE TO GET *you* THERE



Mildmay Road

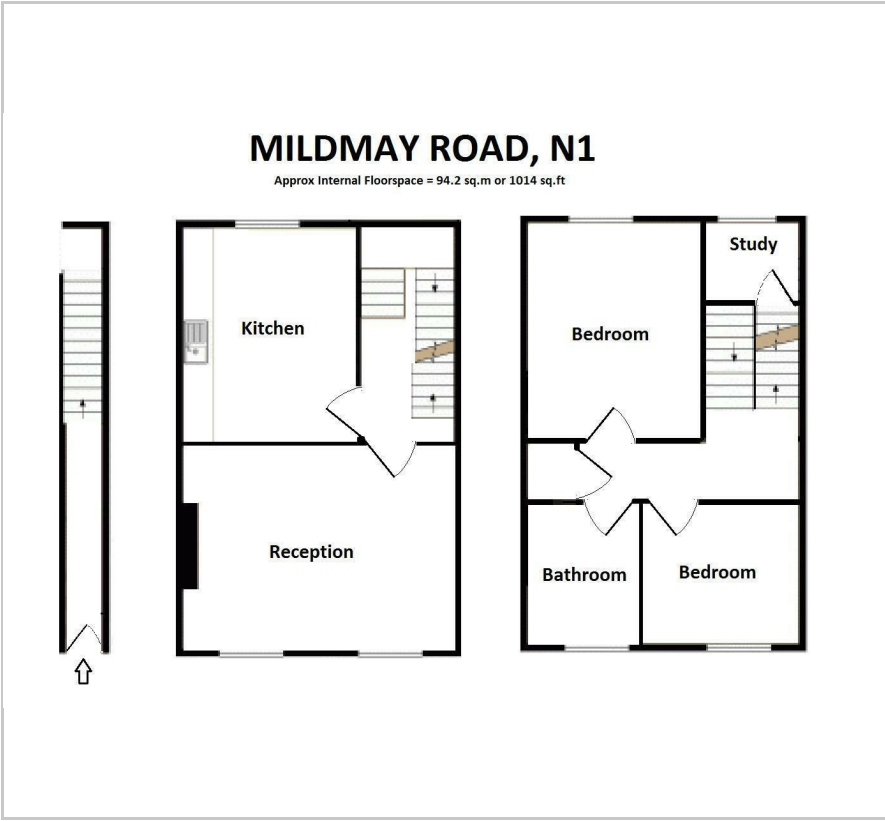
London, N1 4NG

£2,795 Per Month



Council Tax:

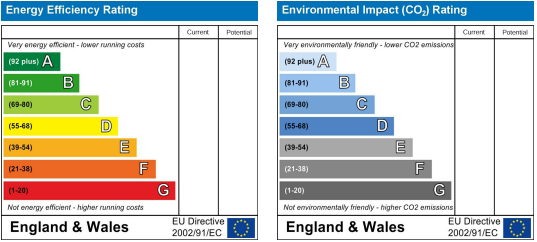
Floor Plan



Area Map



Energy Efficiency Graph



Viewing

Please contact our Hunters Highbury & Islington Lettings Office on 020 7704 0664 if you wish to arrange a viewing appointment for this property or require further information



This very spacious two double bedroom maisonette is arranged over three floors of a period conversion located on Mildmay Road N1.

Boasting of a large reception with double windows, centrepiece fireplace with a separate kitchen on the first floor, two very generous double bedrooms with fitted wardrobes on the second floor, alongside a tiled bathroom with shower over the bath.

The top floor offers an additional study/office space for those professionals working from home. The property is situated in the Mildmay area and benefits from it's own private entrance, gas central heating and high ceilings throughout.

MATERIAL INFORMATION

**Tenure:**  
**Lease Years Remaining:**  
**Annual Ground Rent:**  
**Review Period:**  
**Review Increase:**  
**Service Charge:**  
**Shared Ownership:**  
**Ownership Share:**

These particulars are intended to give a fair and reliable description of the property but no responsibility for any inaccuracy or error can be accepted and do not constitute an offer or contract. We have not tested any services or appliances (including central heating if fitted) referred to in these particulars and the purchasers are advised to satisfy themselves as to the working order and condition. If a property is unoccupied at any time there may be reconnection charges for any switched off/disconnected or drained services or appliances - All measurements are approximate. **THINKING OF SELLING?** If you are thinking of selling your home or just curious to discover the value of your property, Hunters would be pleased to provide free, no obligation sales and marketing advice. Even if your home is outside the area covered by our local offices we can arrange a Market Appraisal through our national network of Hunters estate agents.