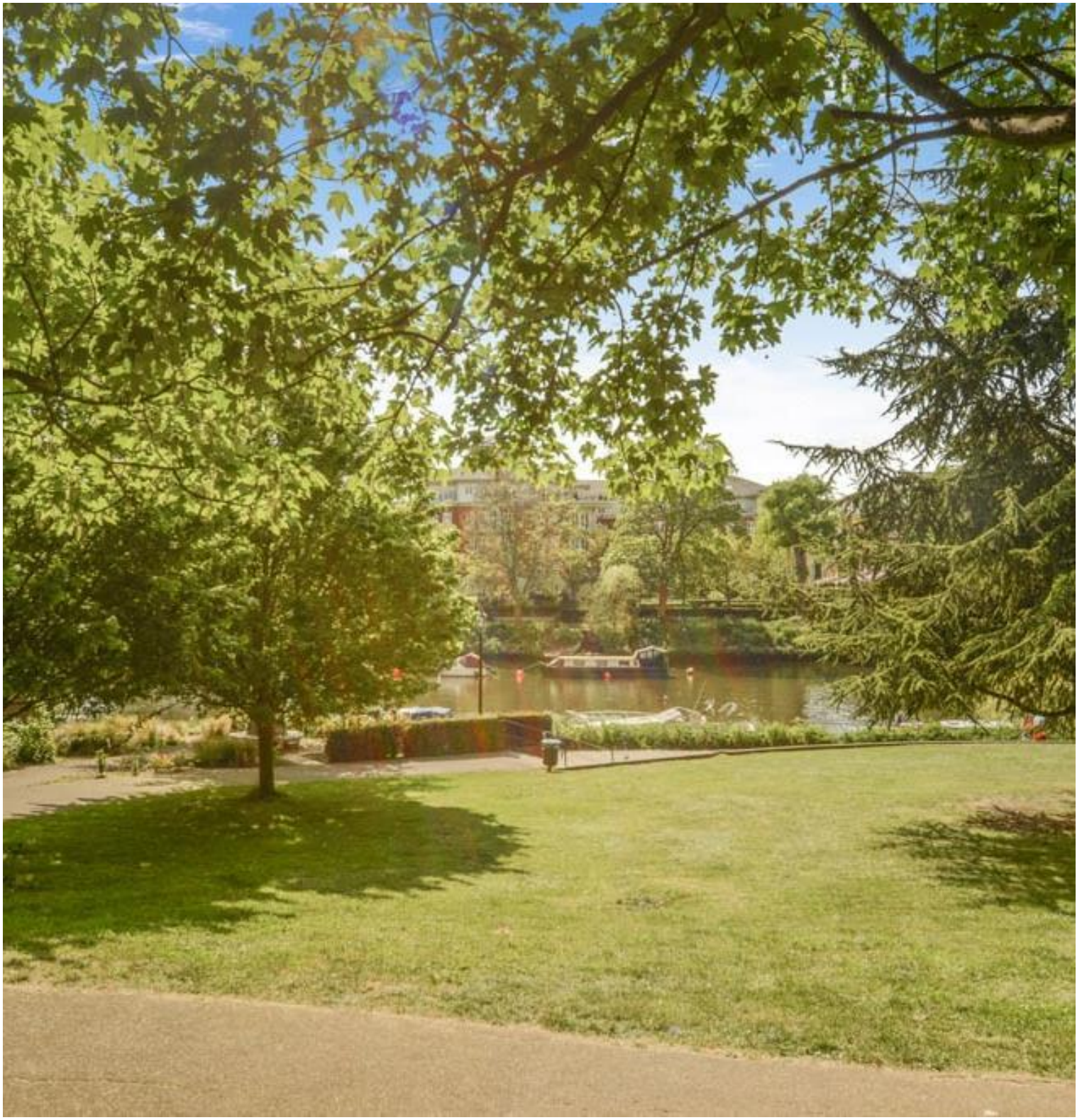


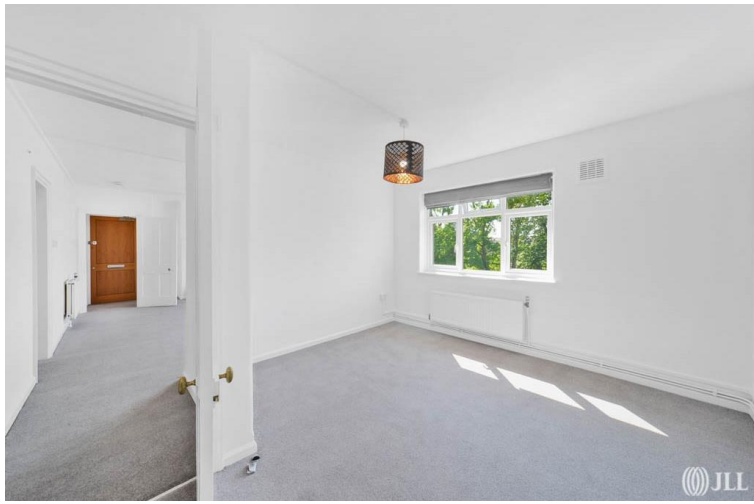


Petersham Road, Richmond TW10

Price £2,750 per month - Furnished, Part
Furnished, Unfurnished







Description

This luminous and recently renovated apartment comprises an entrance hall, modern fitted kitchen with access to a private balcony, spacious reception room, three bedrooms, and a separate bathroom.

The property enjoys a favourable position near Richmond Hill, moments from the extensive amenities of Richmond town centre. Nearby attractions include the UNESCO World Heritage Site of the Royal Botanic Gardens at Kew, Twickenham Stadium, and the historic Ham House.

Local transport connections are excellent, with numerous bus routes serving surrounding areas. Richmond Station provides fast and frequent rail services to central London via South Western Railway (Waterloo in approximately 19 minutes) and the London Underground District Line (West End in approximately 38 minutes). Road access to the A316/M3, M4, and M25 motorways is convenient, whilst Heathrow Airport lies approximately 6.8 miles distant.

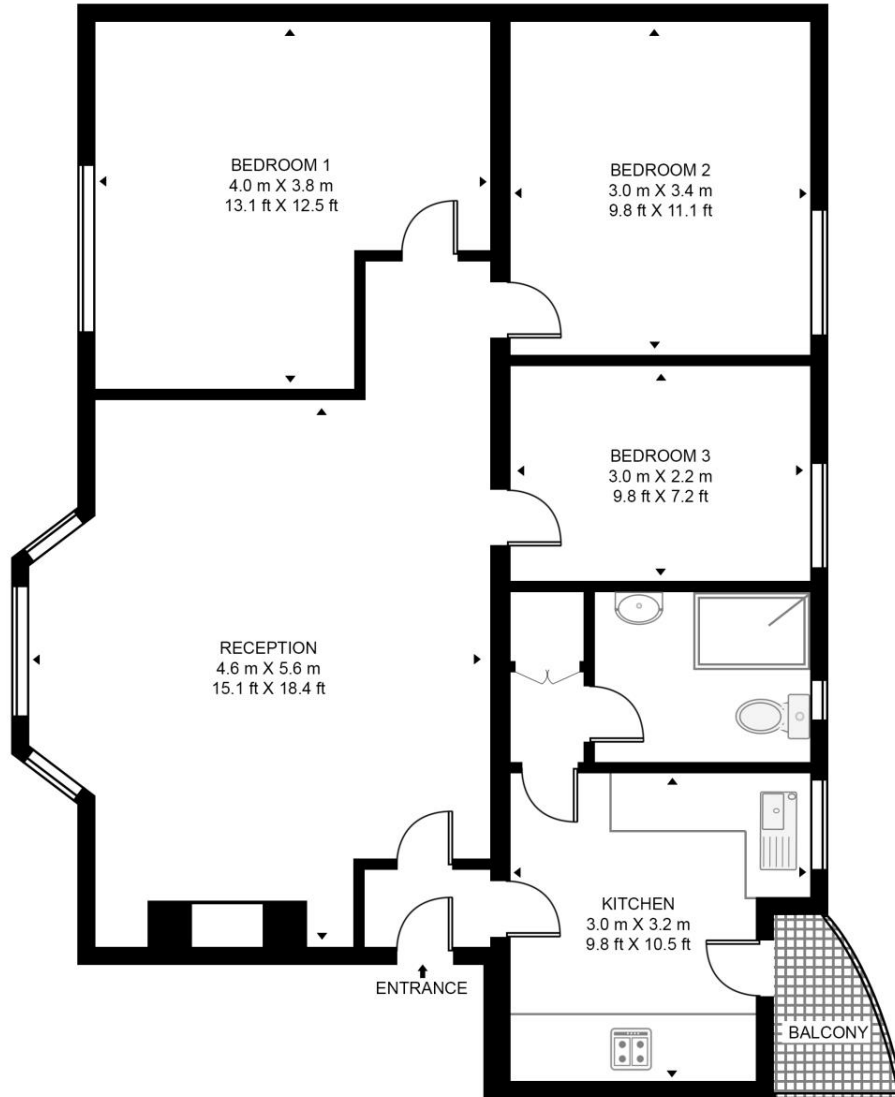
- Three Bedrooms
- One Bathroom
- Spacious Reception
- Modernised Kitchen
- Parking with Permit
- Bicycle Storage
- Stunning River Views

Floorplan

781 sq ft | 73 sq m

PETERSHAM ROAD

APPROXIMATE GROSS INTERNAL FLOOR AREA 781 SQ.FT (72.6 SQ.M)



FIRST FLOOR



This floor plan has been defined by the RICS Code of Measurement. This floor plan and all others are for approximate representative purposes only and upon usage is agreed to as such by the client.

WWW: hdvirtualart.com | TEL: 0203.974.1567 | EMAIL: info@hdvirtualart.com

Kew Bridge
12 Capital Interchange Way,
London TW8 0SP
020 3147 1880
lettingskewbridge@jll.com

Urban living, your way.

jll.co.uk/residential

© 2019 Jones Lang LaSalle IP, Inc. All rights reserved. All information contained herein is from sources deemed reliable; however, no representation or warranty is made to the accuracy thereof.

