



Cheyneys Avenue, HA8

£865,000

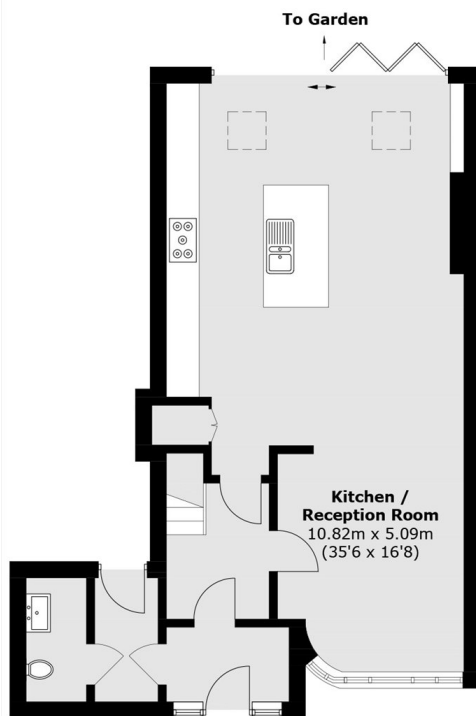
An excellent four bedroom semi-detached home located in the heart of Canons Park. This stunning house has recently had a large rear extension with bifolding doors. The house comes with two bathrooms, a triple driveway and separate garage.

Cheyneys Avenue is one of the most desirable roads in Canons Park. This home is very close to Canons Park and Stanmore Station (Jubilee Line).

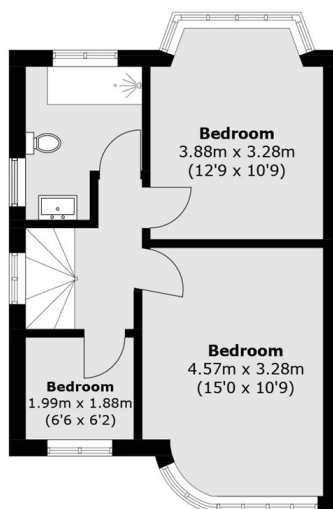
Features

Semi-Detached
Spacious Kitchen
Triple Driveway
Four Bedrooms
Separate Kitchen
Superb Condition

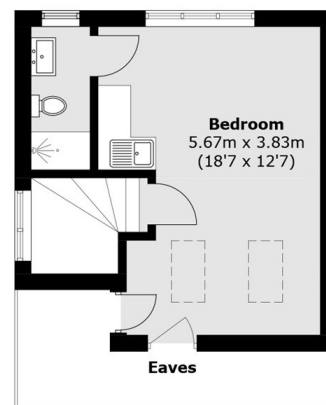
Cheyneys Avenue, Canons Park, HA8



Ground Floor



First Floor



Second Floor

Total area (approx.): 136.9 sq. m (1,473.5 sq. ft)
(Excluding Eaves)