

KIT JOHNSON

residential



Primrose Hill, Bath

£525,000

A Solid 1960's Four Bedroom, Three Storey Townhouse. EPC Grade C



11 Mountain Ash

Bath

BA1 2UU

PRICE: £525,000

A stunning, beautifully appointed three storey 1960's Townhouse with Westerly views to the front and set just below Lansdown. Primrose Hill is a peaceful enclave yet within walking distance into Bath.

Accommodation includes hall, cloakroom, utility and fourth bedroom with ensuite (ideal for guests or similar). On the first floor, a large open living room with captivating views, open plan kitchen/diner with doors onto the garden. On the second floor three bedrooms and a bathroom suite. Enclosed attractive established garden at the rear, parking for two cars at the front. A particularly special location for this immaculate house.

Circa 1968

Beazer & Sons Built

Westerly Views

Four Bedrooms

Ensuite, Bathroom & Cloakroom

Living Room

Fitted Kitchen with Appliances

Utility Room

1319 Sq Ft (122.6 Sq Mt)

Council Tax Band D £2266

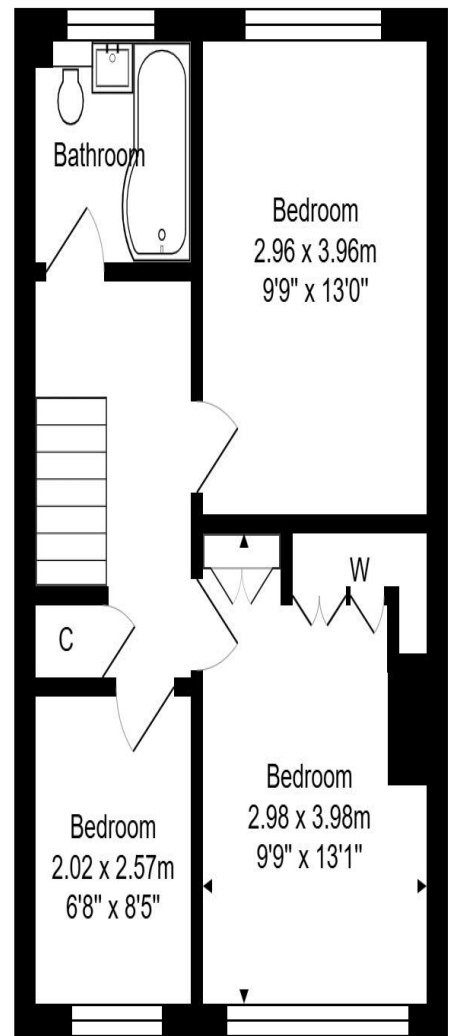
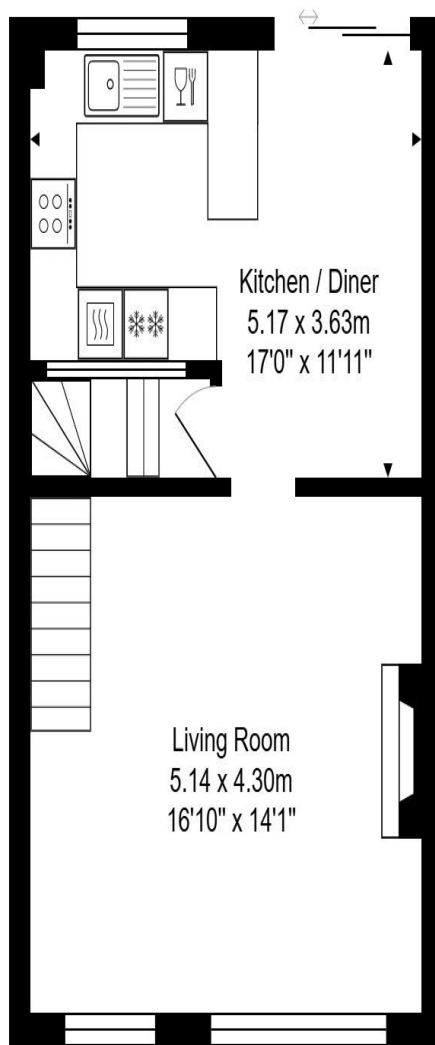
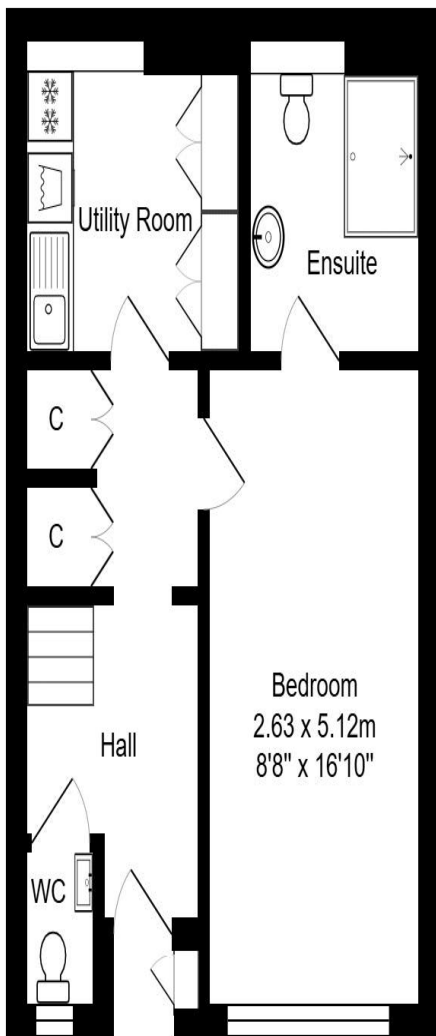
Driveway Parking

Tiered Gardens

Gas Central Heating

Leasehold (941 Years Remaining)





Ground Floor
Area: 40.1 m² ... 432 ft²

First Floor
Area: 41.2 m² ... 444 ft²

Second Floor
Area: 41.2 m² ... 444 ft²

Total Area: 122.6 m² ... 1319 ft²

Whilst every attempt has been made to ensure the accuracy of the floorplan contained here, measurements of doors, windows, rooms and any other items are approximate and no responsibility is taken for any error, omission or mis-statement. This plan is purely for illustrative purposes only and should be used as such by any prospective purchaser.

www.epcassessments.co.uk

Kit Johnson Residential
26-33 High St
Weston
Bath
BA1 4BX
01225 444447
sales@kitjohnson.co.uk
www.kitjohnson.co.uk