

Claydon Avenue, Acklam Gardens



£120,000

IH INGLEBY HOMES





This attractive two-double bedroom, semi-detached property is priced for an early sale as part of a Taylor Wimpey Part-Exchange scheme, and early inspection is certainly advised.

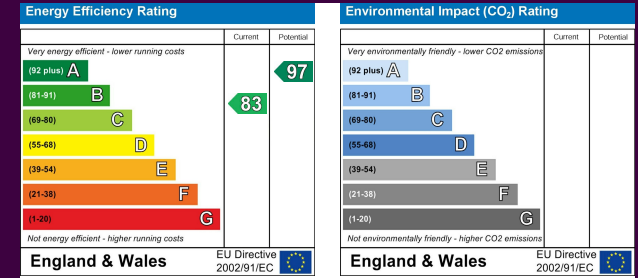
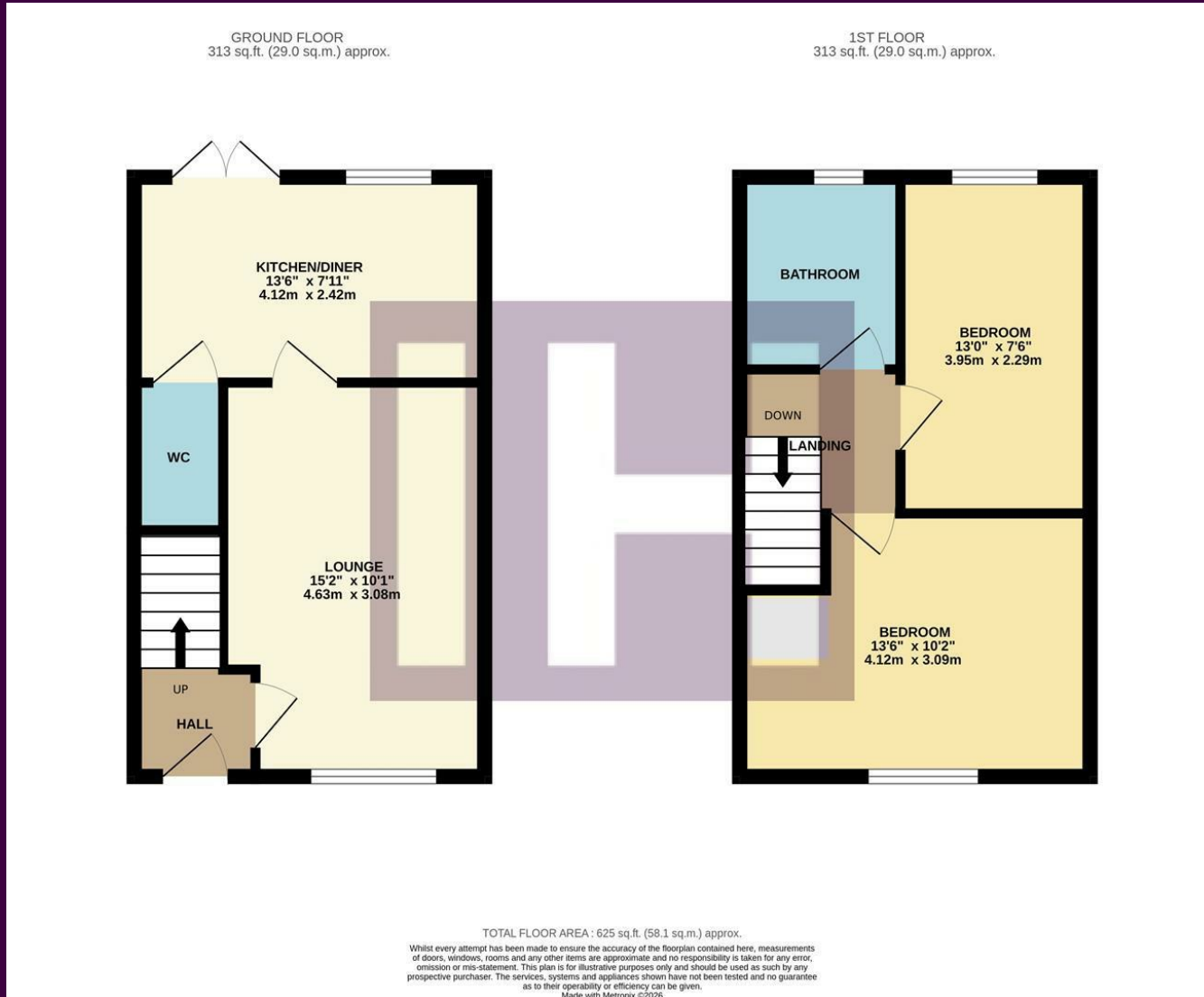
Modern throughout, the accommodation briefly comprises an entrance hall, spacious lounge and separate open-plan kitchen/diner - with 'French' doors to the garden and cloakroom/WC off to the ground floor.

The first floor delivers two great double bedrooms, along with the separate family bathroom, of white suite and over bath shower.

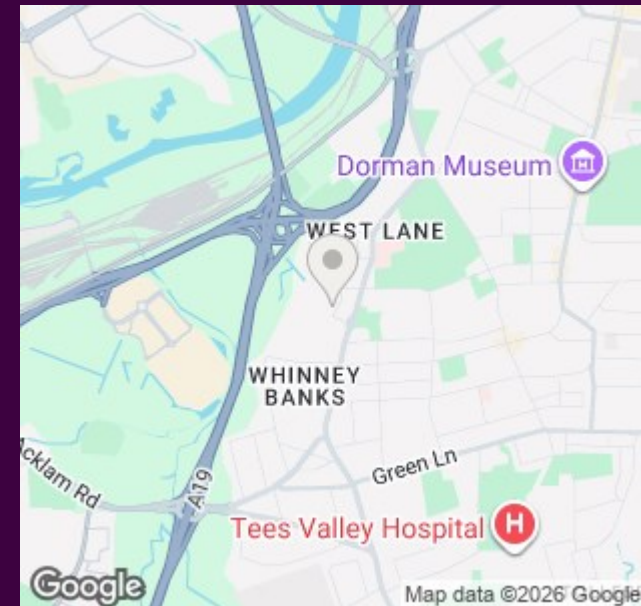


A side drive allows off-road parking and passes the front garden, whilst the rear garden is generous, fully-fence enclosed, with lawn, patio and pebbled areas, timber shed.

The Layout



The Location



Council Tax Band:

B

Tenure:

Freehold



- 'Gleeson' built Semi Detached house on the popular Acklam Gardens development
- Side drive and generous garden
- Modern throughout, viewing advised
- Priced to sell under a Taylor Wimpey part-exchange scheme
- Separate lounge and impressive kitchen/diner