

## Beaumont Crescent, W14

£1,950 Per calendar month

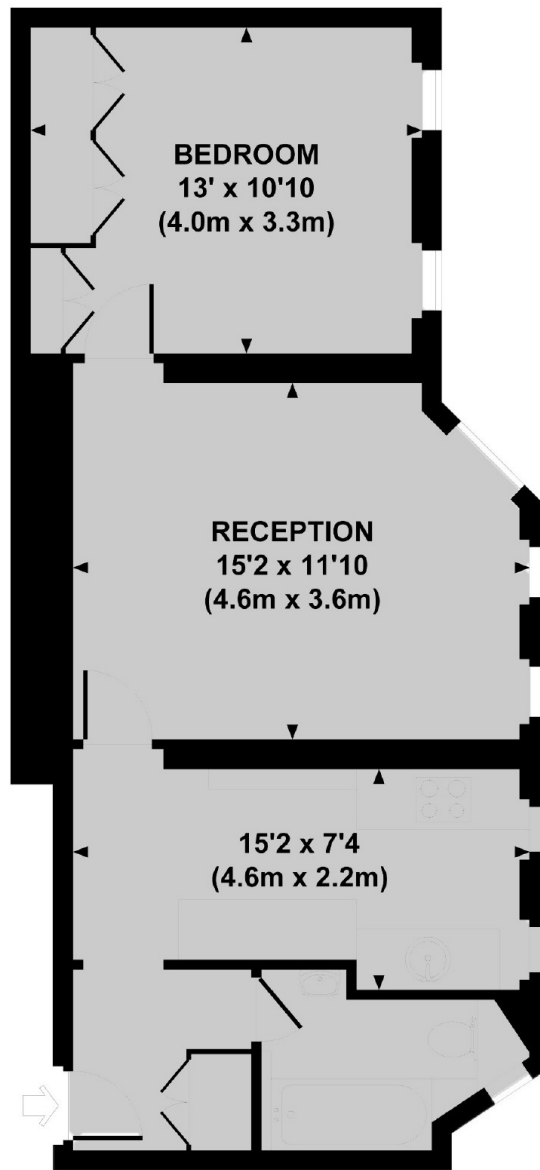
A very smart, one bedroom apartment, decorated to a neutral standard. The property has an excellent size reception room, a lovely modern eat in kitchen and large family bathroom.

West Kensington Mansions is located on Beaumont Crescent, off North End Road within 300 yards of West Kensington underground station, local shops and the A4 for easy access into and out of Central London.

### Features

- Raised Ground Floor
- Eat In Kitchen
- High Ceiling
- Mansions Block
- Close To Tube
- Modern Finish

# Beaumont Crescent, London, W14



**RAISED GROUND FLOOR**

## **WEST KENSINGTON MANSIONS, W14**

Approx. gross internal area  
523 Sq Ft. / 49 Sq M.