

FREEHOLD



House - Semi-Detached

1 AMANDA ROAD, RAINHILL, L35 8PN

Asking Price

£200,000

FEATURES

- Beautifully presented three bedroom semi detached property
- Situated in a sought after location in Rainhill
- Close to excellent schools, shops and transport links
- Entrance hall, lounge and dining kitchen with appliances
- French doors leading to the rear garden
- Family shower with a modern three piece suite
- Gardens to the front and rear
- Driveway for off road parking



BROOKS
ESTATE AND LETTING AGENTS LTD

3 Bedroom House - Semi-Detached located in Rainhill

A beautifully presented three-bedroom semi-detached home located in the highly sought-after area of Rainhill.

Ideally positioned close to excellent local schools, a variety of shops, and convenient transport links, this property makes an ideal family home.

The accommodation briefly comprises a welcoming entrance hall, a spacious lounge, and a modern dining kitchen complete with integrated appliances.

To the first floor, there are three well-proportioned bedrooms and a contemporary family shower room fitted with a stylish three-piece suite.

Externally, the property benefits from well-maintained gardens to both the front and rear, along with a driveway providing off-road parking.

This is a fantastic opportunity to acquire a lovely family home in a desirable location — early viewing is highly recommended.

EPC Rating D

Call us on

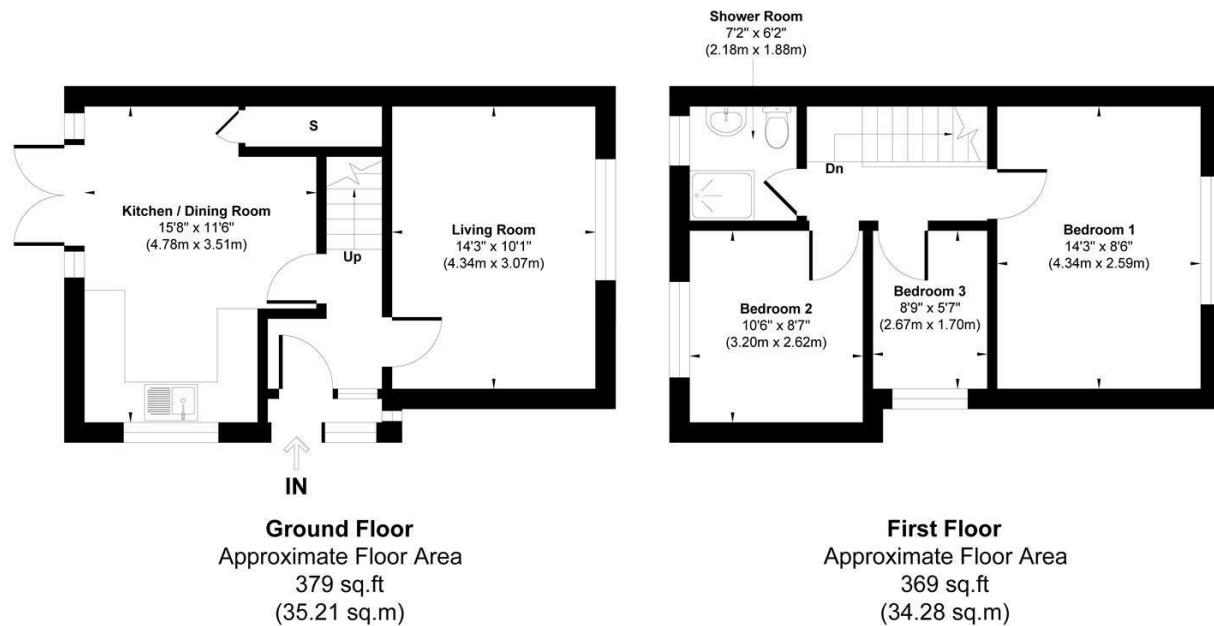
0151 329 3313

prescot@brooksestateandlettings.co.uk

www.brooksestateandlettings.co.uk

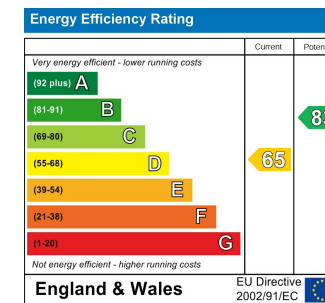
Council Tax Band

B



Approx. Gross Internal Floor Area 748 sq. ft / 69.49 sq. m

Whilst every attempt has been made to ensure the accuracy of the floor plan shown, all measurements, positioning fixtures fittings and any other data shown are an approximate interpretation for illustrative purposes only and are not to scale. No responsibility is taken for any errors, omission, miss-statement or use of data show.



Agents Note: Whilst every care has been taken to prepare these particulars, they are for guidance purposes only. All measurements are approximate and are for general guidance purposes only and whilst every care has been taken to ensure their accuracy, they should not be relied upon and potential buyers are advised to recheck the measurements.

