



Clements estate agents



Alexandra Road, Hemel Hempstead, HP2 5XG

£200,000

Being sold with the benefit of NO UPPER CHAIN is this well presented purpose built ground floor flat. Boasting one bedroom, living room with direct access to its own outside space, modern fitted kitchen, double glazing, electric heating, contemporary bathroom suite, ample storage, residents and visitor parking.

Located within easy reach of the Old Town High Street with all of its local shops, restaurants, coffee shops, public houses, church, Gadebridge Park, Hemel Hempstead Town Centre and the M1, M25 and A41 road links.

Welcome to this charming ground floor apartment located on Alexandra Road in the desirable area of Hemel Hempstead Old Town. This purpose-built flat offers a perfect blend of comfort and convenience, making it an ideal choice for first-time buyers or those looking to downsize.

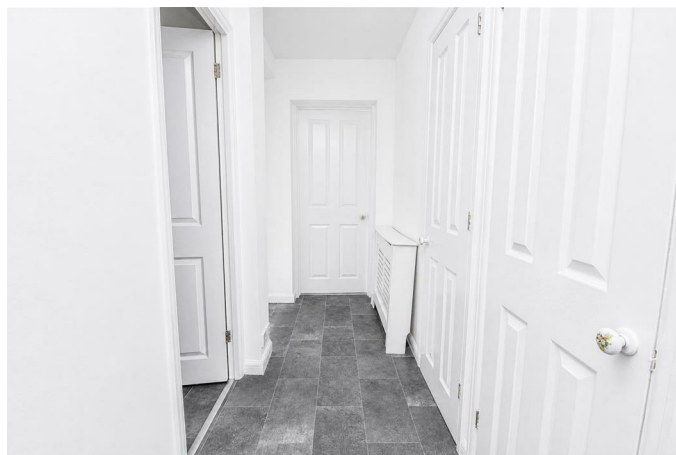
Upon entering, you will find a well-proportioned reception room that provides a warm and inviting space for relaxation or entertaining guests and also boast direct access to its own outside space. The apartment features a modern fitted kitchen, equipped with contemporary appliances and ample storage, ensuring that cooking and meal preparation are a delight.

The property boasts one spacious bedroom, which is perfect for restful nights, and a well-appointed bathroom that caters to your daily needs. The double glazing throughout the flat not only enhances energy efficiency but also ensures a peaceful living environment, shielding you from the hustle and bustle outside.

Additional benefits include electric heating, which provides warmth during the cooler months, and the convenience of both residents and visitor parking, making it easy for friends and family to visit. Importantly, this property is offered with no upper chain, allowing for a smooth and swift transaction.

In summary, this delightful apartment on Alexandra Road presents an excellent opportunity for those seeking a modern and low-maintenance living space in Hemel Hempstead. With its appealing features and prime location, it is certainly worth considering for your next home.

Entrance Hall



Living Room 12'1 x 11'8 (3.68m x 3.56m)



Modern Fitted Kitchen 12'1 x 5'3 (3.68m x 1.60m)



Bedroom 10'11 x 9'4 (3.33m x 2.84m)



Bathroom



Outside Space



Residents Parking

Floor Plan



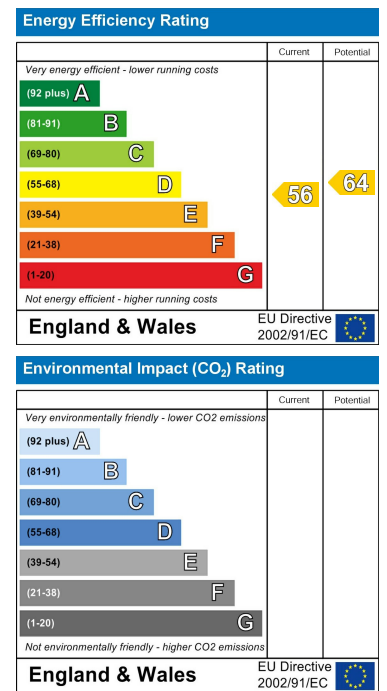
Ground Floor

This floor plan is for illustrative purposes only. It is not drawn to scale. Any measurements, floor areas (including any total floor area), openings and orientations are approximate. No details are guaranteed, they cannot be relied upon for any purpose and do not form any part of any agreement. No liability is taken for any error, omission or misstatement. A party must rely upon its own inspection(s). Powered by www.Propertybox.io

Area Map



Energy Efficiency Graph



These particulars, whilst believed to be accurate are set out as a general outline only for guidance and do not constitute any part of an offer or contract. Intending purchasers should not rely on them as statements of representation of fact, but must satisfy themselves by inspection or otherwise as to their accuracy. No person in this firm's employment has the authority to make or give any representation or warranty in respect of the property.