



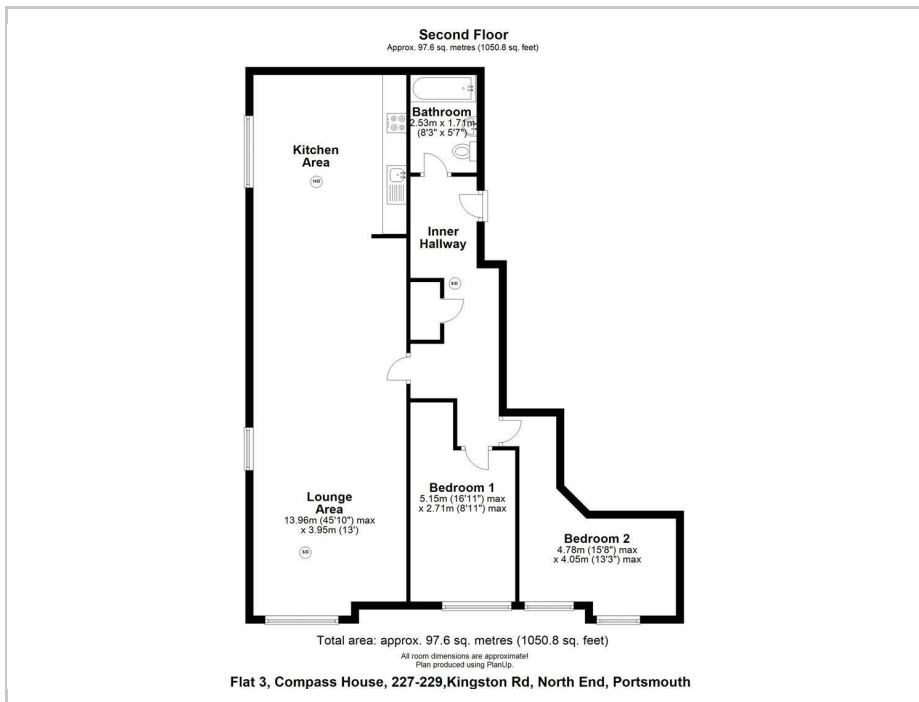
Flat 3 Compass House, Portsmouth, PO2 7ER

£960 PCM Council Tax Band B Deposit £1,107

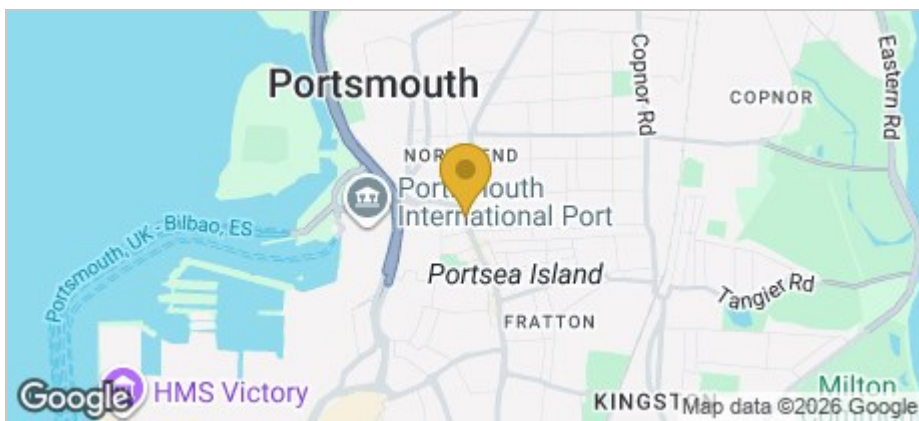


Tully's

Floor Plan



Area Map



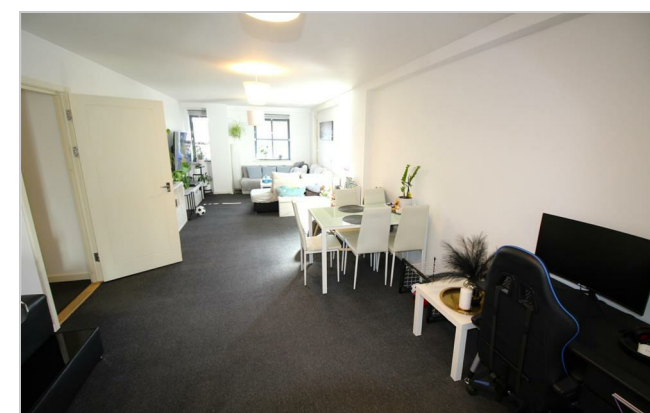
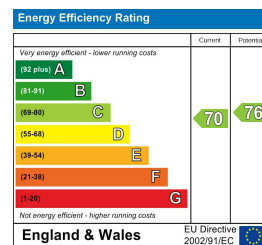
Accommodation

- HOLDING DEPOSIT - £221.00
- DEPOSIT - £1107.00
- 2 DOUBLE BEDROOMS
- *BUILDING LIFT*
- LARGE FITTED KITCHEN
- VERY LARGE LOUNG/DINER
- FANTASTIC LOCATION
- CALL TODAY TO ARRANGE A VIEWING
- AVAILABLE 13/06/2026

Viewing

Please contact our Southsea Office on 023 9273 2241 if you wish to arrange a viewing appointment for this property or require further information.

Energy Efficiency Graph



157-159 Albert Road, Southsea, Portsmouth, Hampshire, PO4 0JW
023 9273 2241 Email: tully@tullyand.co lettings@tullyand.co

Tully's