

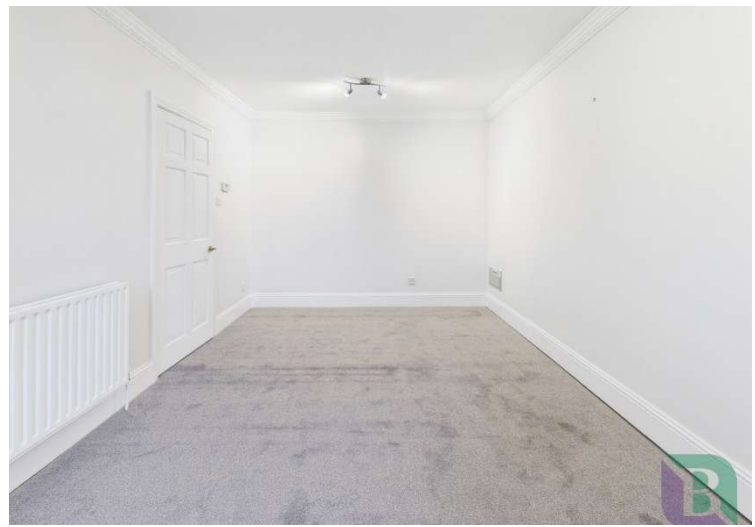


The Knoll, Aspley Heath, Milton Keynes

Price: Offers Over £250,000 Leasehold



Located on the highly regarded Knoll, one of Aspley Heath's most desirable residential addresses, this well-presented one-bedroom apartment offers peaceful village living surrounded by beautiful woodland and countryside.

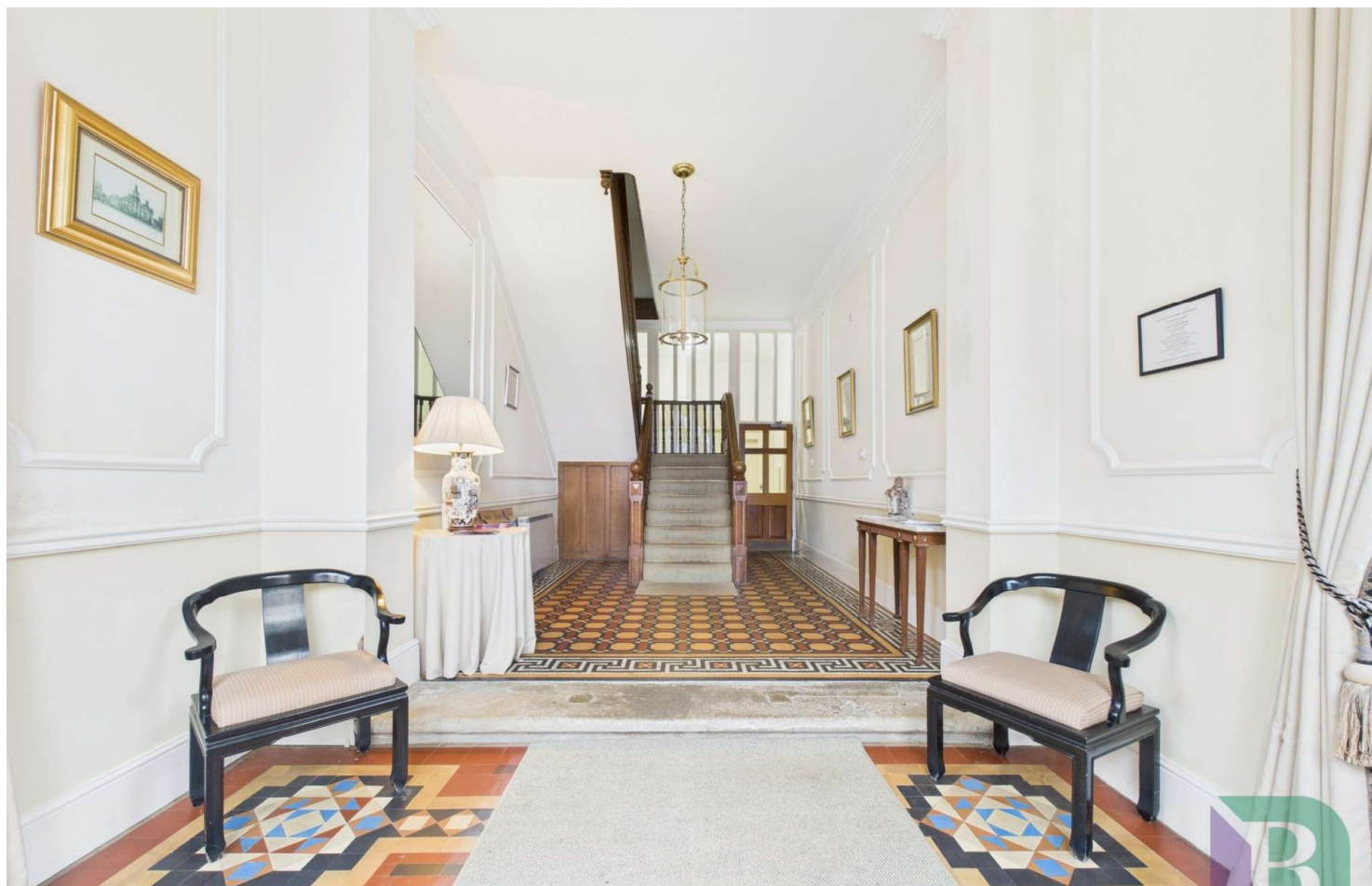


The Knoll

Aspley Heath, MK17 8TX



- No Upper Chain
- Highly Desirable Location
- 7 Acres Of Communal Gardens
- Parking & Garage
- Well Presented Throughout
- Lift Access
- Fitted Kitchen
- Re – Fitted Bathroom

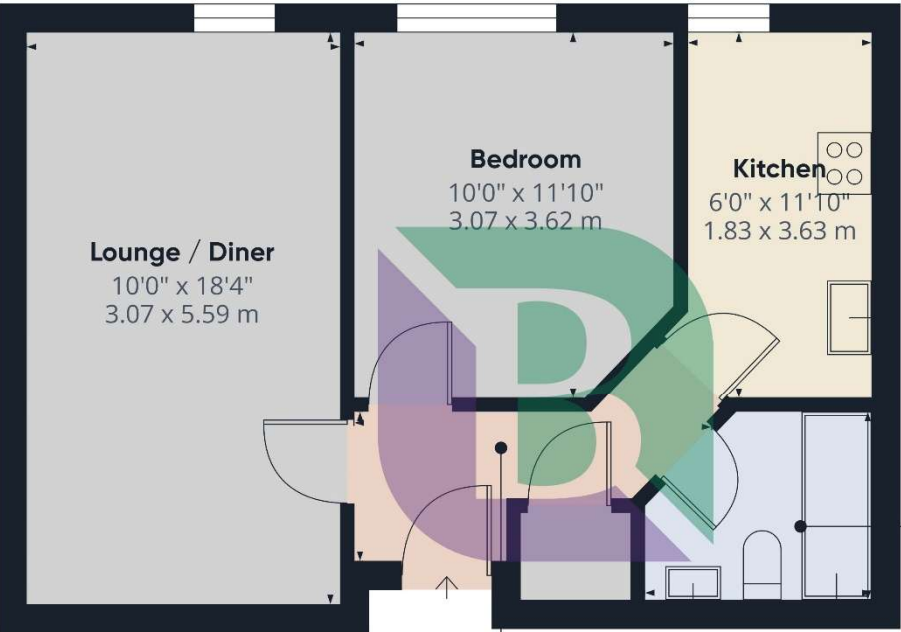


The apartment features a bright and airy reception room with space for both living and dining, benefiting from a pleasant outlook and an abundance of natural light. The kitchen is neatly arranged with modern fittings and ample storage, making it ideal for everyday living.

The spacious double bedroom provides a quiet retreat, while the bathroom is finished to a modern standard with stylish fixtures and a clean, contemporary design. The property is well maintained throughout and offers a practical layout suited to a range of buyers.

The property also benefits from access to 7 acres of communal gardens, single garage and parking.

The Knoll is particularly well known for its tranquil setting, bordering Aspley Woods and Woburn Forest, yet remains within easy reach of Woburn Sands High Street, offering a variety of cafés, restaurants, shops, and local amenities. Excellent walking and cycling routes are right on the doorstep, making the location especially appealing to nature lovers.



Approximate total area⁽¹⁾
472 ft²
43.9 m²

Bathroom
7'5" x 6'2"
2.27 x 1.89 m

Hallway
10'9" x 4'9"
3.29 x 1.46 m



(1) Excluding balconies and terraces

Calculations reference the RICS IPMS 3C standard. Measurements are approximate and not to scale. This floor plan is intended for illustration only.

GIRAFFE360





6 High Street
Woburn Sands
Buckinghamshire
MK17 8RL

Notice

Please note we have not tested any apparatus, fixtures, fittings, or services. Interested parties must undertake their own investigation into the working order of these items. All measurements are approximate and photographs provided for guidance only.

