

Buy. Sell. Rent. Let.



Sterling Crescent, Waltham



3



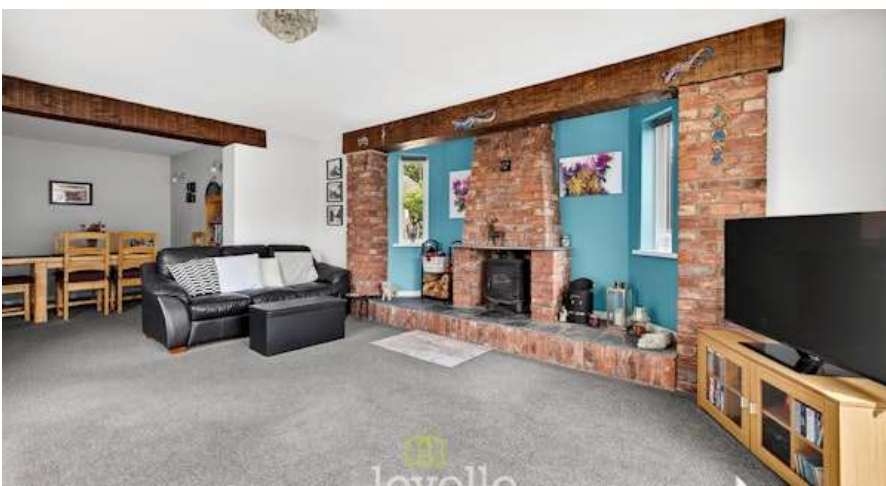
2



2

When it comes to  
property it must be

  
lovelle



**£275,000**



An extended three-bedroom detached bungalow in the popular village of Waltham, offering two reception rooms, a modern kitchen with breakfast area, en-suite to the main bedroom, ample driveway parking and a private enclosed garden, all within easy reach of local amenities, schools and transport links.

### Key Features

- Detached House
- Three Bedrooms & Two Bathrooms
- Extended - Large Living Space
- Popular Village Location
- uPVC DG & GCH
- Viewings Advised
- EPC rating TBC
- Tenure: Freehold





Lovelle offer to market this extended three-bedroom detached bungalow in the popular village of Waltham, on the outskirts of Grimsby. Well suited to families and retirees, it combines generous living space, practical features and a convenient setting close to local amenities, schools and transport links.

A welcoming hallway provides access to the main accommodation. The property includes two reception areas: a large lounge forming part of the extension, featuring a beautiful inglenook-style fireplace and doors opening directly onto the enclosed private garden. This space flows into a dedicated dining area, creating a sociable layout for everyday living and entertaining.

The kitchen is fitted with modern units and worktops, incorporating a sink, space for a range-style oven, and plumbing for both a washing machine and dishwasher.

The bungalow provides three bedrooms. Bedroom one is a double room with an en-suite shower room comprising shower, sink and WC. The second bedroom is also a double, while the third bedroom is a single room, suitable as a child's bedroom, study or guest room. The main bathroom features a modern suite with shower over bath, sink with vanity units and WC.

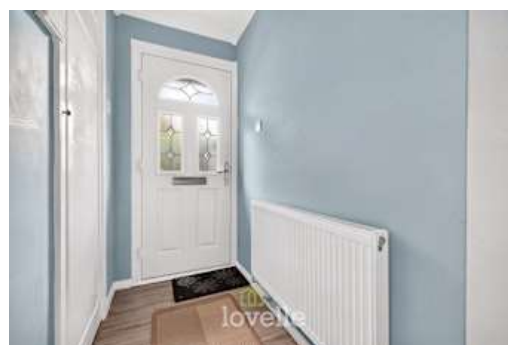
Outside, the property benefits from a large driveway providing ample off-road parking. To the rear, there is an enclosed private garden, offering a secure outdoor area.

The bungalow is uPVC double glazed and gas centrally heated.

Waltham village offers a good selection of local amenities including shops, cafes, pubs and everyday services, centred around the High Street and village centre. Nearby schools serve a range of age groups, making the location attractive to families.

Public transport links are available via local bus services connecting Waltham with Grimsby and surrounding areas. Grimsby Town railway station, typically around a 10-15 minute drive depending on traffic, provides services to destinations including Cleethorpes, Lincoln, Sheffield and Manchester, with journey times to Lincoln often around an hour. Road connections give straightforward access to the A16 and wider regional routes.

Local green spaces and parks in and around Waltham offer opportunities for walking and recreation, adding to the appeal of this sought after location. This detached bungalow presents a practical and well-arranged home within a well-regarded village setting.

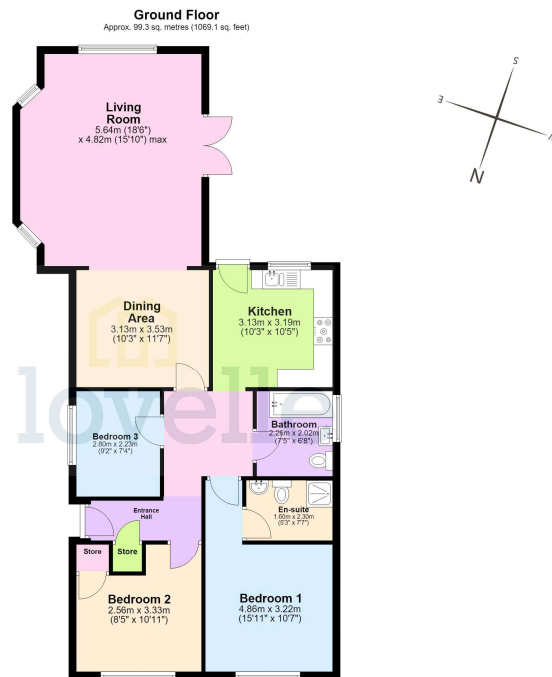




## Disclaimer

We endeavour to make our sales particulars accurate and reliable, however, they do not constitute or form part of an offer or any contract and none is to be relied upon as statements of representation or fact. Any services, systems and appliances listed in this specification have not been tested by us and no guarantee as to their operating ability or efficiency is given. All measurements have been taken as a guide to prospective buyers only, and are not precise. If you require clarification or further information on any points, please contact us, especially if you are travelling some distance to view.





Total area: approx. 99.3 sq. metres (1069.1 sq. feet)

The provided floor plan is intended for general informational purposes only and may not accurately represent the exact dimensions, layout, or features of the property. The floor plan should not be relied upon for making decisions about purchasing, renting, or modifying the property. Actual measurements and features may vary. It is recommended that interested parties conduct a physical inspection of the property to verify the accuracy of the floor plan and obtain specific information about the property's condition, amenities, and any other relevant details.  
Plan produced using Planity.

When it comes to **property**  
it must be

  
**lovelle**

01472 251918

grimsby@lovelle.co.uk