

Location:

The property is very well positioned for transport links, including Acton Central (Overground) and Acton Main Line (Elizabeth Line), providing fast and convenient access into Central London.

Key points:

- Two bedroom end-terrace house
- 1,061 sq.ft / 98.7 sq.m
- 40ft South-facing garden
- Potential to extend (STPP)
- Side access

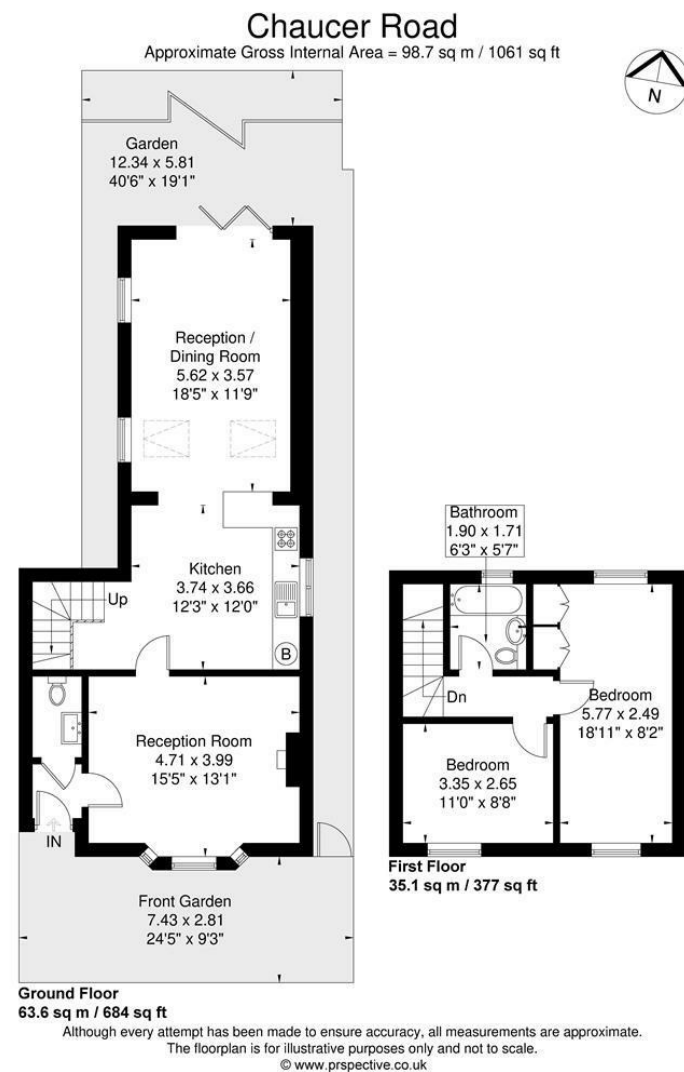
Do Better:

Acton

sales@astonrowe.co.uk

57-59 Churchfield Road,
Acton, London, W3 6AY

020 8992 3600



£875,000

Chaucer Road, London W3 6DR

Energy Efficiency Rating		Environmental Impact (CO ₂) Rating	
Current	Potential	Current	Potential
70	83		

England & Wales EU Directive 2002/91/EC

- 1 Reception Rooms
- 2 Bedrooms
- 1 Bathrooms



The current owner says:

The property is in a fantastic location for the local shops, schools, parks and transport links.

A charming two-bedroom end-terraced house, offering potential to extend and located in the heart of Acton's ever-popular Poets Corner.

The ground floor features a spacious living room to the front, a guest WC, and a large kitchen/dining room overlooking the rear.

The first floor comprises two well-proportioned bedrooms, complemented by a modern family bathroom.

Externally, the property benefits from a 40ft+ south-facing garden.

The house presents an excellent opportunity for further refinement while also offering the potential to extend, creating a third bedroom and second bathroom. Planning permission was previously granted by Ealing Council in 2021 (Planning Reference: 214984HH), although this consent expired in 2024.

Connectivity is excellent. The Elizabeth Line at Acton Mainline runs east into the city and direct to Heathrow. The Overground connects to Kew Gardens and Hampstead Heath. Acton Central Park a short walk — with pitch and putt and a cocktail café. David Lloyd Health Club is a stone's throw away. Churchfield Road is a lovely local strip with independent cafés and restaurants.

What's better:

The house presents an excellent opportunity for further refinement while also offering the potential to extend, creating a third bedroom and second bathroom. Planning permission was previously granted by Ealing Council in 2021 (Planning Reference: 214984HH), although this consent expired in 2024.

