



Guide Price
£675,000

Freehold

5x  3x  1x 

**St. Nicholas Road,
Littlestone, New
Romney, Kent, TN28**

OVER 60?

Secure this property
for up to **59% less!**

Wards
Helping you move forwards



Main features

- Just around the corner from the seafront
- Decorated to the highest standard with the utmost attention to detail
- Amazing home with a flexible layout
- Short drive to New Romney High Street
- Close to local shops and amenities

Accommodation

GROUND FLOOR

- Porch
- Entrance Hall
- Utility Room: 7'8 x 7'0 (2.34m x 2.14m)
- Kitchen/Breakfast Room: 14'5 x 10'9 (4.40m x 3.28m) narrowing to 7'0 x 8'7 (2.14m x 2.62m)
- Inner Hallway
- Lounge/Dining Room: (L-shaped) 23'8 x 9'8 (7.22m x 2.95m) plus 12'11 x 8'7 (3.94m x 2.62m)
- Bedroom 3: 13'0 x 10'9 (3.97m x 3.28m)
- En-Suite Shower Room
- Bedroom 4: 10'4 x 9'7 (3.15m x 2.92m)
- Bedroom 5: 10'10 x 10'2 (3.30m x 3.10m)
- Bathroom

FIRST FLOOR

- Landing
- Bedroom 1: 9'2 x 7'10 (2.80m x 2.39m) plus 11'5 maximum x 6'6 (3.48m x 1.98m)
- En-Suite Bathroom
- Bedroom 2: 13'2 x 10'8 (4.02m x 3.25m) plus 3'2 x 6'7 (0.97m x 2.01m)
- Cloakroom
- Loft Room

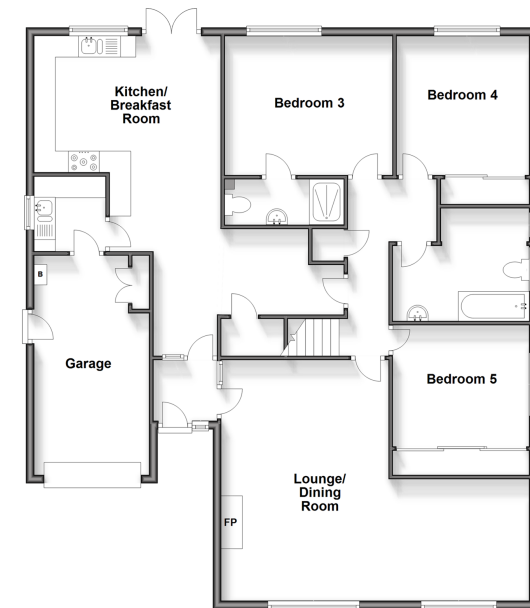
OUTSIDE

- Off Road Parking
- Garage
- Front & Rear Gardens
- Summer House/Workshop

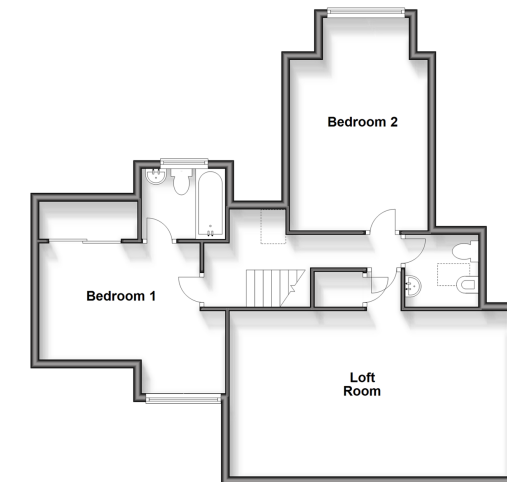
Call New Romney - 01797 363745 ■ wardsokent.co.uk

- A private rental licensing scheme applies to some properties in this area, please contact us before proceeding
- Legal advice should be taken to verify fixtures/fittings, planning, alterations and/or lease details
- Appliances & services are untested, dimensions are approximate and floor plans are not to scale
- Through a Homewise Home For Life Plan people aged 60+ can secure this property for up to 50% less, by purchasing a Lifetime Lease.

Ground Floor
Approx. 141.0 sq. metres (1518.2 sq. feet)



First Floor
Approx. 72.6 sq. metres (783.6 sq. feet)



13525738/20251121/MMJ/SRH