



## Strete Bank, Kirklington Road

Eakring, Newark, NG22 0DA

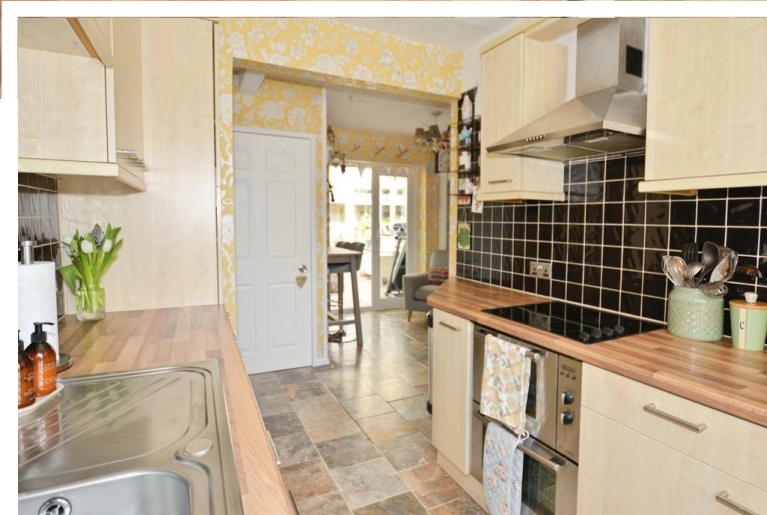


Book a Viewing

**£270,000**

NO UPWARD CHAIN. Well appointed Semi Detached House situated in a private setting which has been lovingly maintained by the present owner. Accommodation includes, Entrance Hall, Lounge, Breakfast Room, Conservatory, Kitchen, Utility Room, First floor, Three Bedrooms and Bathroom. Outside, large front lawn garden with driveway and turning area, rear enclosed landscaped garden with seating area and a patio area, home office and storage room. We highly recommend an early viewing to fully appreciate this delightful home.





**SERVICES**

Electric, water and drainage mains services available. Oil central heating.

**EPC RATING – D.**

**COUNCIL TAX BAND – B.**

**LOCAL AUTHORITY** - Newark and Sherwood District Council.

**TENURE** - Freehold.

**VIEWINGS** - By prior appointment through Alasdair Morrison and Mundys.

**LOCATION** Eakring is a sought after conservation village, perfectly positioned for the bustling market towns of Southwell and Newark. This village boasts a picturesque parish church (St. Andrew's), a village hall, and the delightful Daffodil Tearoom, creating a strong sense of community. Surrounded by stunning countryside, Eakring offers easy access to an array of outdoor attractions, including Rufford Abbey Country Park, Rufford Golf Club, Clumber Park, and Sherwood Pines-perfect for walking, cycling, and outdoor enthusiasts.



**ENTRANCE HALL** Having UPVC door with glazed panelled inset, external front light, gives access to the entrance hall. With stairs off to the first floor landing, under stairs storage cupboard, double glazed window to the front elevation and radiator.

**LOUNGE** 17' 10" x 10' 10" (5.44m x 3.3m) With double glazed window to the front elevation, double glazed double doors to the rear seating area and rear garden, radiator and wood burner with slate hearth (fitted approximately 10 years ago).

**BREAKFAST AREA** 8' 6" x 8' 10" (2.59m x 2.69m) With radiator, tiled floor, breakfast bar and double glazed double doors to the conservatory.



**CONSERVATORY** 12' 6" x 8' 8" (3.81m x 2.64m) With a brick base, double glazed windows to both sides, double glazed double doors to the rear garden and tiled floor.

**KITCHEN** 9' x 7' 9" (2.74m x 2.36m) With a double glazed window to the front elevation, fitted with a range of wall and floor mounted units, cupboards and drawers, worksurface with stainless steel single drainer sink unit, splash tiled surround, electric oven and grill, electric hob with extractor over, integrated dishwasher, tiled floor, opening to side hall with double glazed door to the side elevation, double glazed window to the rear elevation and door off to the utility room.

**UTILITY ROOM** 4' 11" x 4' 9" (1.5m x 1.45m) Double glazed window to the rear, plumbing for washing machine, wall mounted central heating boiler, coat hooks and boot/shoe storage.



**FIRST FLOOR LANDING** With airing cupboard/linen store with emersion and shelving, double glazed window to the rear elevation and access to the roof space.

**BEDROOM 1** 12' x 11' 10" (3.66m x 3.61m) With double glazed windows to the front and side elevations, radiator and wood flooring.

**BEDROOM 2** 8' 9" x 12' 9" (2.67m x 3.89m) With double glazed window to the front elevation, radiator and wood flooring.

**BEDROOM 3** 9' 1" x 7' (2.77m x 2.13m) With double glazed window to the rear elevation, recessed wardrobe, radiator and wood flooring.



**BATHROOM** 5' 11" x 7' 3" (1.8m x 2.21m) Comprising of a bath with shower over, rail and curtain, wash hand basin, splash tiled surround, heated towel rail and double glazed window to the rear elevation.

**SEPARATE WC** With low level WC and double glazed window to the rear elevation.

**OUTSIDE**

**FRONT** A concrete and gravel driveway leads to the front of the property, turning area, the front garden is mainly



lawned with flower/shrub beds and borders, mature trees.

SIDE Gated side access leads to the rear enclosed and private garden, side oil tank, side lighting and side storage area.

REAR The rear landscaped gardens offers a private seating area with flower/shrub borders.

OFFICE AND STORE ROOM Accessed through double glazed double doors, light and power, further side storage room with light and power and separate consumer unit.



**WEBSITE**

Our detailed website shows all our available properties and also gives extensive information on all aspects of moving home, local area information and helpful information for buyers and sellers. This can be found at [mundys.net](http://mundys.net)

**SELLING YOUR HOME – HOW TO GO ABOUT IT**

We are happy to offer FREE advice on all aspects of moving home, including a Valuation by one of our QUALIFIED/SPECIALIST VALUERS. Ring or call into one of our offices or visit our website for more details.

**REFERRAL FEE INFORMATION – WHO WE MAY REFER YOU TO**

<https://www.mundys.net/referrals/>

**BUYING YOUR HOME**

An Independent Survey gives peace of mind and could save you a great deal of money. For details, including RICS Home Buyer Reports, call 01522 556088 and ask for Steven Spivey MRICS.

**GETTING A MORTGAGE**

We would be happy to put you in touch with our Financial Adviser who can help you to work out the cost of financing your purchase.

**NOTE**

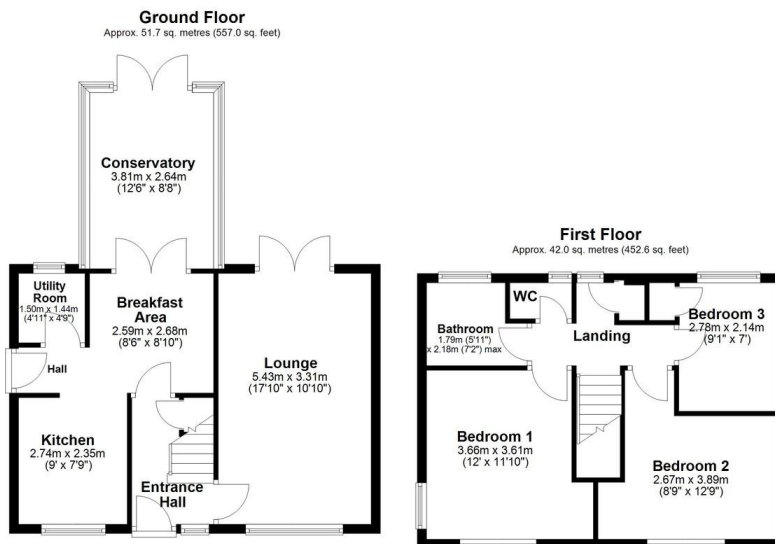
1. None of the services or equipment have been checked or tested.
2. All measurements are believed to be accurate but are given as a general guide and should be roughly checked.

**GENERAL**

If you have any queries with regard to a purchase, please ask and we will be happy to assist. Mundys makes every effort to ensure these details are accurate, however they for themselves and the vendors (Lessors) for whom they act as Agents give notice that:

1. The details are a general outline for guidance only and do not constitute any part of an offer or contract. No person in the employment of Mundys has any authority to make or give representation or warranty whatever in relation to this property.
2. All descriptions, dimensions, references to condition and necessary permissions for use and occupation and other details should be verified by your self on inspection, your own advisor or conveyancer, particularly on items stated herein as not verified.

Regulated by RICS. Mundys is the trading name of Mundys Property Services LLP registered in England NO. OC353705. The Partners are not Partners for the purposes of the Partnership Act 1890. Registered Office 29 Silver Street, Lincoln, LN2 1AS.



Total area: approx. 93.8 sq. metres (1009.5 sq. feet)

For Illustration Purposes Only  
Plan produced using PlanUp.

Strete Bank, Kirklington Road, Eakring

46 Middle Gate  
Newark  
NG24 1AL  
[newark@amorrison-mundys.net](mailto:newark@amorrison-mundys.net)  
01636 700888

22 King Street  
Southwell  
NG25 0EN  
[southwell@amorrison-mundys.net](mailto:southwell@amorrison-mundys.net)  
01636 813971

29 Silver Street  
Lincoln  
LN2 1AS  
[info@mundys.net](mailto:info@mundys.net)  
01522 510044

22 Queen Steet  
Market Rasen  
LN8 3EH  
[info@mundys.net](mailto:info@mundys.net)  
01673 847487

Agents Note: Whilst every care has been taken to prepare these sales particulars, they are for guidance purposes only. All measurements are approximate and are for general guidance purposes only and whilst every care has been taken to ensure their accuracy, they should not be relied upon and potential buyers are advised to check the measurements.

