



Jordan fishwick



4 Wilshaw Place, Macclesfield, Cheshire, SK11 7ZG

**** Internal Inspection Essential, SHOW HOME CONDITION **** A beautifully appointed three/four bedroom town house set within a quiet cul de sac within this select development. Each of the rooms are presented to a high standard and all who view will not fail to be impressed with the quality, style and elegance coupled with the attention to detail. Located in a sought after residential location within walking distance of local schools, shops and public transport. In brief the property comprises; entrance hallway, downstairs WC, study/bedroom four and stylish open plan family/dining kitchen with French doors opening to the garden. To the first floor there is an elegant living room, master bedroom and a stylish en-suite shower room. The second floor offers two double bedrooms and a family bathroom. A driveway to the front provides off road parking. The Westerly facing garden is laid mainly to lawn, fenced and enclosed.

£350,000

Viewing arrangements

Viewing strictly by appointment through the agent

01625 434000

Location

Set in Cheshire's plains, on the fringe of the Peak District National Park, Macclesfield combines the old with the new. Originally a medieval town, Macclesfield became the country's 'Silk' capital in the 1750's, whilst it still retains that heritage, in recent years it has grown to become a thriving business centre. Macclesfield is a modern shopping centre with a range of leisure facilities to suit most tastes. There is a popular monthly Treacle Market which is a bustling Arts, Antiques, Crafts, Food and Drink Market, held on the cobbles of the town centre with around 140 stalls of exceptional food and drink, unique crafts and vintage and information from the Macclesfield community. There are many independent and state primary and secondary schools. The access points of the North West Motorway network system, Manchester International Airport and some of Cheshire's finest countryside are close at hand. Intercity rail links to London Euston and Manchester Piccadilly can be found at Macclesfield and Wilmslow railway stations as well as commuter rail links to the local business centres.

Directions

Leaving Macclesfield along Park Lane, turn left at the junction with Oxford Road onto Congleton Road. Taking the third turning on the left onto Moss Lane, continue over the mini roundabout and then take the third right onto Treacle Avenue. Take the second right onto Wilshaw Place with this particular property being found on the left hand side.

Entrance Hallway

Accessed via a composite front door. Stairs to first floor. Large storage cupboard. Herringbone style LVT floor. Radiator.

Downstairs WC

Push button low level WC and pedestal wash hand basin. Herringbone style LVT floor. Radiator.

Study

9'0 x 6'0

Double glazed window to the front aspect. Radiator.

Open Plan Family/Dining Kitchen

Kitchen

10'4 x 6'0

Fitted with a range of base units with work surfaces over and matching wall mounted cupboards. Stainless steel one and a quarter bowl sink unit with mixer tap and drainer. Inset four ring gas hob with extractor hood over and oven below. Integrated fridge/freezer, washing machine and dishwasher all with matching cupboard fronts. Herringbone style LVT floor.

Family/Dining Area

16'0 x 12'10

Space for a sofa, dining table and chairs. Built in under stairs storage cupboard. Double glazed French doors to the garden. Radiator.

Stairs To The First Floor

Stairs to the second floor. Radiator.

Living Room

13'0 x 11'8 max

Elegantly presented living room with double glazed window to the rear aspect. Radiator.

Bedroom One

13'0 x 10'0

Master bedroom with ample space for a king size bed. Double glazed window to the front aspect. Radiator.

En-Suite Shower Room

Fitted with a white suite comprising; shower enclosure, push button low level WC and pedestal wash hand basin. Double glazed window to the side aspect. Electric shaver point. Radiator.

Stairs To The Second Floor

Access to the loft space. Radiator.

Bedroom Two

13'0 x 12'10

Double bedroom with built in storage cupboard. Skylight window to the rear aspect. Restricted head height. Radiator.

Bedroom Three

13'0 x 9'0

Double bedroom with double glazed window to the front aspect. Built in storage cupboard. Restricted head height. Radiator.

Family Bathroom

Fitted with a white suite comprising; panelled bath, push button low level WC and pedestal wash hand basin with mixer tap. Double glazed window to the side aspect. Radiator.

Outside

Driveway

A driveway to the front provides off road parking for two vehicles. A courtesy gate to the garden.

Westerly Facing Garden

The Westerly facing garden is of low maintenance and mainly laid to lawn. Fenced and enclosed with gated access to the side.

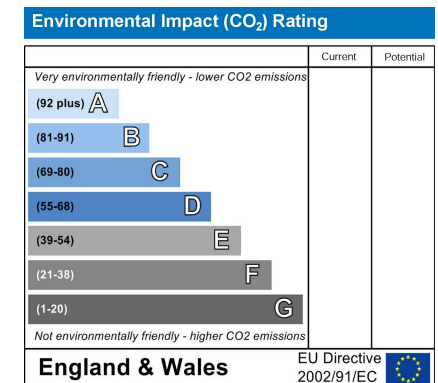
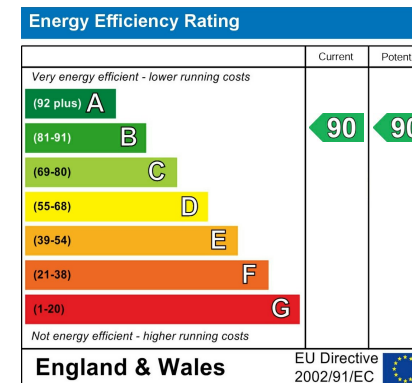
Tenure

The vendor has advised us that the property is Freehold and that the council tax is band C.

We would recommend any prospective buyer to confirm these details with their legal representative.

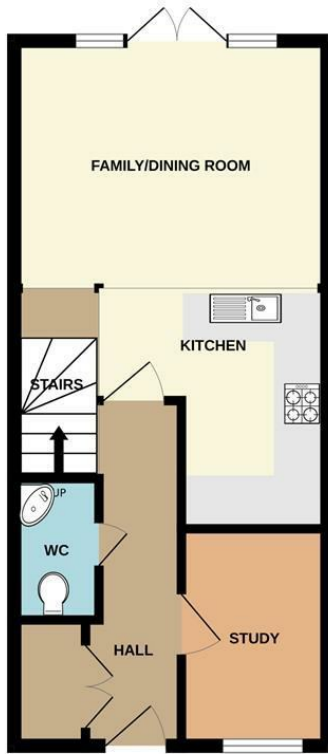
Anti Money Laundering - Note

To be able to sell or purchase a property in the United Kingdom all agents have a legal requirement to conduct Identity checks on all customers involved in the transaction to fulfil their obligations under Anti Money Laundering regulations. We outsource this check to a third party and a charge will apply. Ask the branch for further details.

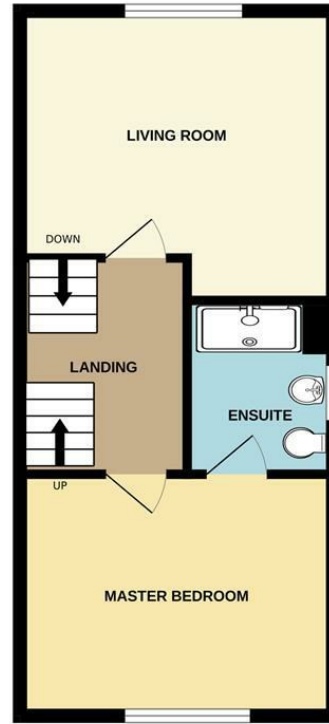




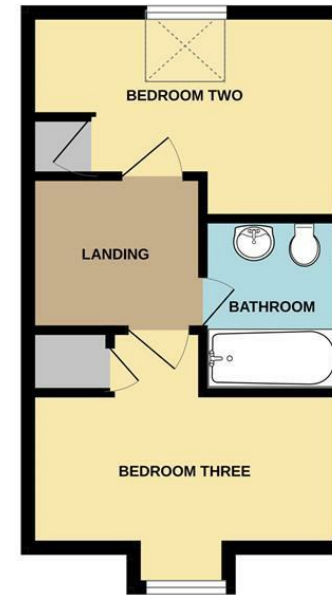
GROUND FLOOR



1ST FLOOR



2ND FLOOR



Measurements are approximate. Not to scale. Illustrative purposes only
Made with Metropix ©2026



These particulars are believed to be accurate but they are not guaranteed and do not form a contract. Neither Jordan Fishwick nor the vendor or lessor accept any responsibility in respect of these particulars, which are not intended to be statements or representations of fact and any intending purchaser or lessee must satisfy himself by inspection or otherwise as to the correctness of each of the statements contained in these particulars. Any floorplans on this brochure are for illustrative purposes only and are not necessarily to scale.

Offices at: Chorlton, Didsbury, Disley, Hale, Glossop, Macclesfield, Manchester Deansgate, Manchester Whitworth Street, New Mills, Sale, Wilmslow and Withington

01625 434000

macclesfield@jordanfishwick.co.uk
www.jordanfishwick.co.uk

