



3, Rock Terrace, Bakewell, DE45 1DJ

3, Rock Terrace

Bakewell, DE45 1DJ

Description

Located in the heart of Bakewell, Rock Terrace presents a delightful opportunity to acquire a charming Victorian terraced cottage. This superb property boasts one double bedroom and is thoughtfully arranged over three floors, offering a perfect blend of character and modern living.

Upon entering, you are greeted by a welcoming porch that leads into a spacious dining kitchen. This well-appointed kitchen features high-quality built-in appliances, a convenient pantry area, and ample space for a kitchen table, complemented by a coal effect fire set upon a slate hearth. The tasteful sage-coloured units and classic Belfast sink enhance the kitchen's appeal, making it a delightful space for culinary pursuits.

Ascending the staircase, you will find the main reception room, where large windows frame breathtaking views of the surrounding countryside and Bakewell itself. The exposed wooden floorboards add warmth and character to this cosy space. This floor also houses the main bathroom, which is elegantly finished with wooden panelling and a three-piece suite, including a shower over the bath and a heated towel rail for added comfort.

The top floor is dedicated to a generously sized master bedroom, which continues to showcase those stunning views and offers ample storage space, all fully carpeted for a touch of luxury.

Externally, the property benefits from parking for one large or two small vehicles, alongside a small, low-maintenance garden featuring a wooden bench, perfect for enjoying the serene surroundings.

This meticulously maintained home has seen significant upgrades, including a new roof and chimney in 2017, kitchen damp proofing in 2020, and a brand new boiler and heating system installed in 2023. Whether you are seeking a first home, a charming weekend retreat, or a sound investment, this delightful Victorian cottage is offered with no onward chain and is ready to welcome its new owners.

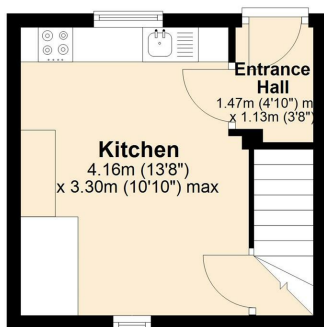
- GUIDE PRICE £200,000 to £210,000
- Charming period Victorian property
- Split level living with fabulous views
- Spacious dining kitchen with ample storage
- Main bathroom with three piece suite
- Large double master bedroom to the top floor
- Patio garden ideal for relaxing in the afternoon
- Off street parking in the heart of Bakewell
- New roof in 2017 and boiler and heating system in 2023
- Offered for sale with no onward chain





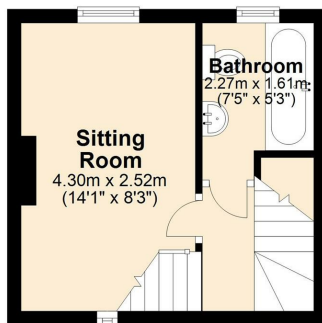
Ground Floor

Approx. 17.6 sq. metres (189.5 sq. feet)



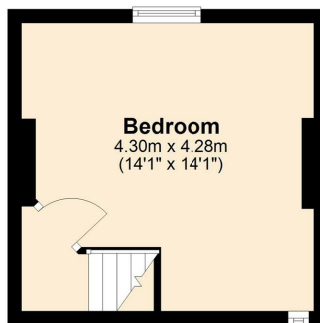
First Floor

Approx. 17.6 sq. metres (189.5 sq. feet)



Second Floor

Approx. 17.6 sq. metres (189.5 sq. feet)



Total area: approx. 52.8 sq. metres (568.5 sq. feet)

Bakewell
3 Royal Oak Place
Matlock Street
Bakewell DE45 1HD
T: 01629 700699
E: bakewell@elr.co.uk

Banner Cross
888 Ecclesall Road
Banner Cross
Sheffield S11 8TP
T: 01142 683388
E: bannercross@elr.co.uk

Dore
33 Townhead Road
Sheffield
S17 3GD
T: 0114 2362420
E: dore@elr.co.uk

Hathersage
Main Road, Hathersage
Hope Valley
Derbyshire S32 1BB
T: 01433 651888
E: peakdistrict@elr.co.uk

Rotherham
149 Bawtry Road
Wickersley
Rotherham S66 2BW
T: 01709 917676
E: wickersley@elr.co.uk

**EADON
LOCKWOOD
& RIDDLE**
ESTD 1840