

Saville Place

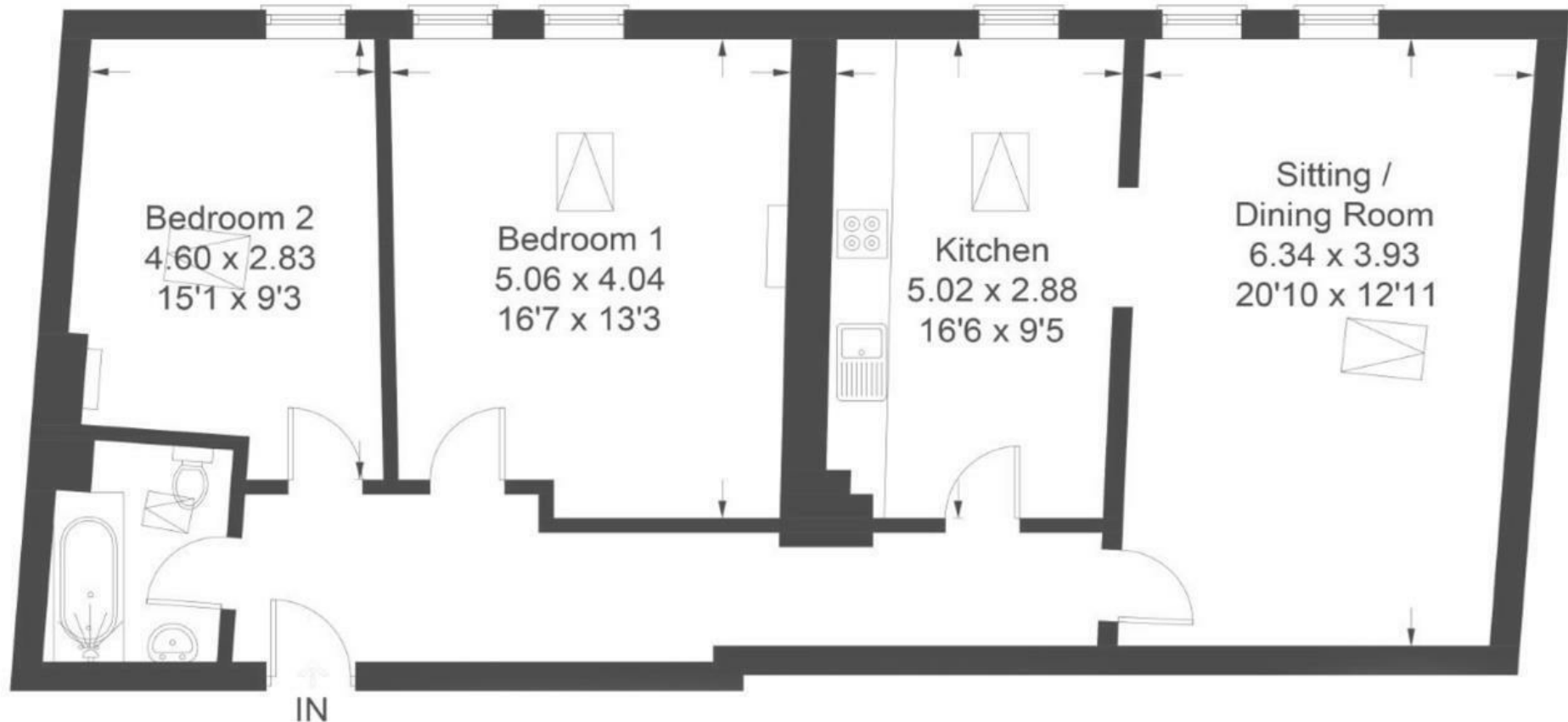
CLIFTON

APPROXIMATE FLOOR AREA
93.4 SQM / 1005 SQFT



Second Floor

93.4 sq m / 1005 sq ft



Illustrations are for reference purposes only, measurements are approximate, not to scale.

Boardwalk

Saville Place

CLIFTON, BRISTOL



£390,000



2 Bedrooms



BS8 4EJ



1 Bathrooms

"We thanked our lucky stars when we found this spacious haven in the centre of Clifton Village. We had all the perks of living among our favourite coffee shops (with Foliage opposite and Gail's just below) but with the peace and quiet that comes with being on the top floor. We have always loved the character of West Loft - it's beautiful beams and high ceilings. The rooms are bathed in sunlight - even though it's in a wonderful location, it's a home that made us want to stay in and enjoy!"

