



Connells

Stratford Road
Lighthorne Heath Leamington Spa



Property Description

A beautifully renovated two double bedroom end-terrace home situated in the popular village of Lighthorne, ideally positioned for easy access to JLR, Aston Martin and the M40—making it perfect for commuters and investors alike.

The accommodation begins with a welcoming entrance hallway, leading through to a dual-aspect lounge that offers plenty of natural light. To the rear is a recently updated kitchen/diner, providing a practical and stylish space for everyday living and entertaining.

To the first floor are two well-proportioned double bedrooms, both benefiting from fitted wardrobes, along with a modern family bathroom finished to a high standard.

Externally, the property boasts a generous and private rear garden, ideal for outdoor dining or relaxation. Further benefits include solar panels and a ground source heat pump, enhancing the home's energy efficiency and reducing running costs.

This property represents an ideal first-time purchase or investment opportunity in a sought-after village location.

Approach

The property is set back from the road behind the lawned fore garden with a pathway leading to the front entrance,

Entrance Hallway

With stairs rising to the first floor and doors off to the lounge and kitchen diner.

Lounge

Spacious dual aspect lounge comprising a radiator.

Kitchen Diner

Recently renovated kitchen fitted with wall and base units with complementary work surfaces over and tiling to the splash back areas, incorporating a stainless steel sink and drainer unit. Integrated appliances include an electric

oven, electric hob and fridge/freezer, whilst providing space and plumbing for a washing machine. With a double glazed window to rear elevation.

First Floor

Landing

The stairs lead from the hallway. With doors to both bedrooms and the family bathroom.

Bedroom One

Dual aspect double bedroom comprising a fitted wardrobe and radiator.

Bedroom Two

Double bedroom benefitting from a fitted wardrobe, a radiator and a double glazed window to front elevation.

Bathroom

Three piece suite fitted with a wash hand basin, bath with shower over and a W/C. Having partly tiled walls, a radiator, a double glazed window to rear elevation and a cupboard housing the heating system.

Outside

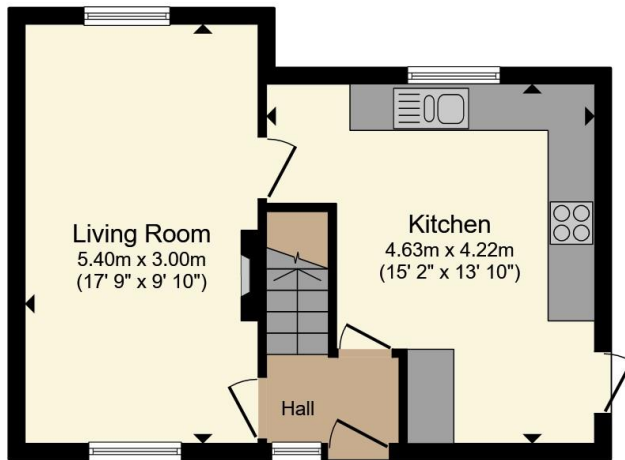
Rear Garden

Generous and private rear garden being mainly laid to lawn with a patio area - perfect for outdoor enjoyment and relaxation.

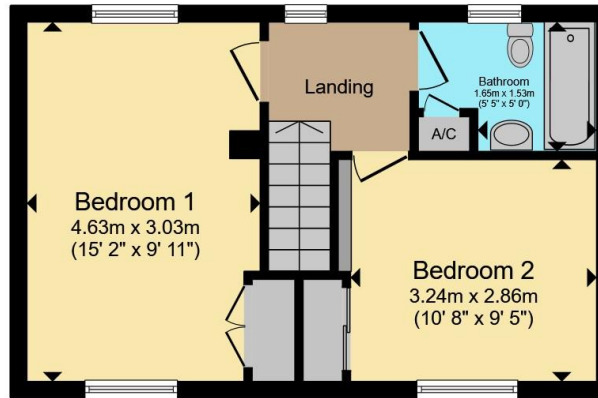
Parking

On street.





Ground Floor



First Floor

Total floor area 70.1 m² (754 sq.ft.) approx

This floor plan is for illustrative purposes only. It is not drawn to scale. Any measurements, floor areas (including any total floor area), openings and orientation are approximate. No details are guaranteed, they cannot be relied upon for any purpose and they do not form part of any agreement. No liability is taken for any error, omission or misstatement. A party must rely upon its own inspection(s). Powered by www.propertybox.io



To view this property please contact Connells on

T 01926 881 441
E leamingtonspa@connells.co.uk

7-8 Euston Place
 LEAMINGTON SPA CV32 4LL

EPC Rating: D Council Tax
 Band: B

view this property online connells.co.uk/Property/SPA314921

Tenure: Freehold



1. MONEY LAUNDERING REGULATIONS Intending purchasers will be asked to produce identification documentation at a later stage and we would ask for your co-operation in order that there will be no delay in agreeing the sale. 2. These particulars do not constitute part or all of an offer or contract. 3. The measurements indicated are supplied for guidance only and as such must be considered incorrect. Potential buyers are advised to recheck measurements before committing to any expense. 4. We have not tested any apparatus, equipment, fixtures, fittings or services and it is in the buyers interest to check the working condition of any appliances.

Connells Residential is registered in England and Wales under company number 1489613, Registered Office is Cumbria House, 16-20 Hockliffe Street, Leighton Buzzard, Bedfordshire, LU7 1GN. VAT Registration Number is 500 2481 05.

See all our properties at www.connells.co.uk | www.rightmove.co.uk | www.zoopla.co.uk

Property Ref: SPA314921 - 0006