



**CHURCHFIELD ROAD**  
WALTON-ON-THAMES

**JACKSON-STOPS** 

## CHURCHFIELD ROAD WALTON-ON-THAMES, KT12

ASKING PRICE: £300,000

A two double bedroom apartment in an exclusive development for the over 70's, of just a few homes in central Walton on Thames. The main living area features dual aspects, providing a comfortable space for both relaxing and entertaining. The property benefits from lift access and a communal garden.

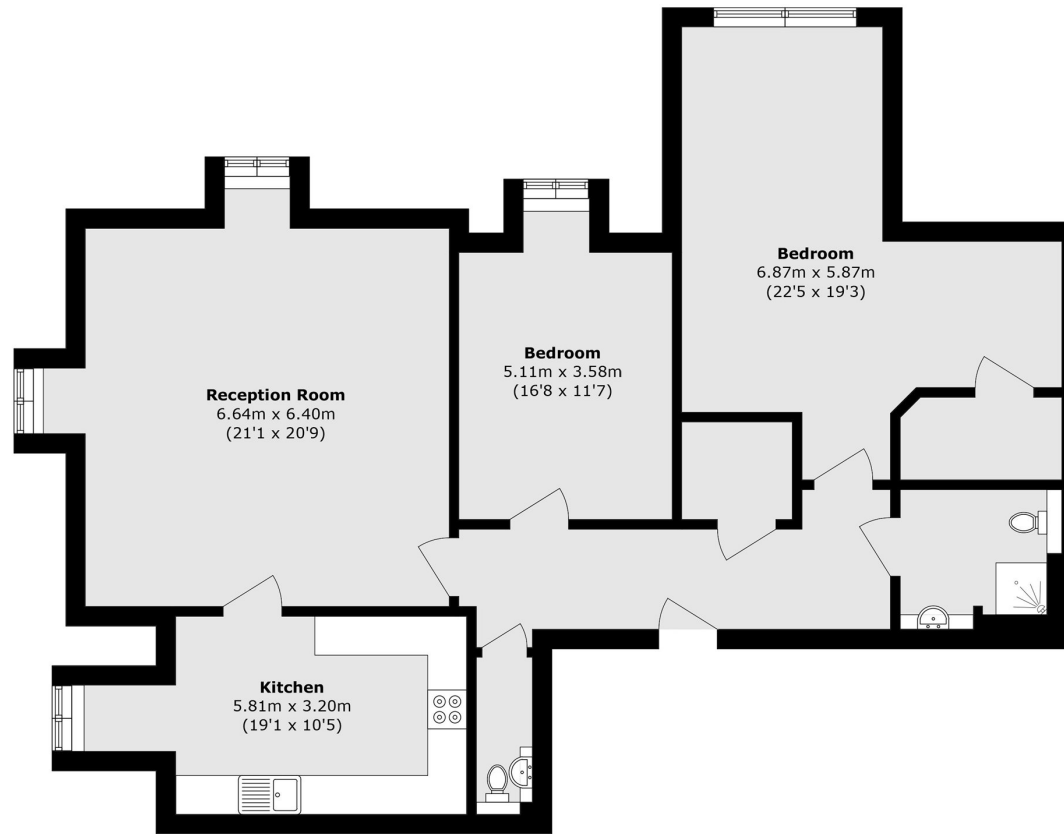
Walton-on-Thames offers a wide range of amenities, including a variety of shops, restaurants, and cafés such as Starbucks, Costa, and Wagamama, as well as an Everyman cinema. The town is bordered by the River Thames, providing a scenic setting for walking, cycling, running, and a variety of water-based activities. Additional leisure facilities can be found at the Elmbridge Xcel Sports Hub, which caters to football, athletics, and other sports.

### KEY FEATURES

- Two Bedrooms
- Fantastic Location
- High Specification
- Lift Access
- Communal Garden
- Top Floor







Total area (approx.): 119.7 sq. m (1288.4 sq. ft)

Energy Rating: C. We aim to make our particulars both accurate and reliable. However they are not guaranteed; nor do they form part of an offer or contract. If you require clarification on any points then please contact us, especially if you are travelling some distance to view. Please note that appliances and heating systems have not been tested and therefore no warranties can be given as to their good working order.

**ASKING PRICE: £300,000**

**WEYBRIDGE**

**01932 821 160**

[weybridge@jackson-stops.co.uk](mailto:weybridge@jackson-stops.co.uk)

[jackson-stops.co.uk](http://jackson-stops.co.uk)

**JACKSON-STOPS** 