



Harley Street, W1G

£1,695,000

A three bedroom apartment arranged over the first and second floors of the building.

Located over two floors of a Harley Street building moments from Regents Park and Marylebone High Street. The property requires updating and has a share in the freehold.

Features

- Three Double Bedrooms
- Two Bathrooms
- Drawing Room
- Dining Room
- Kitchen
- Share Of Freehold

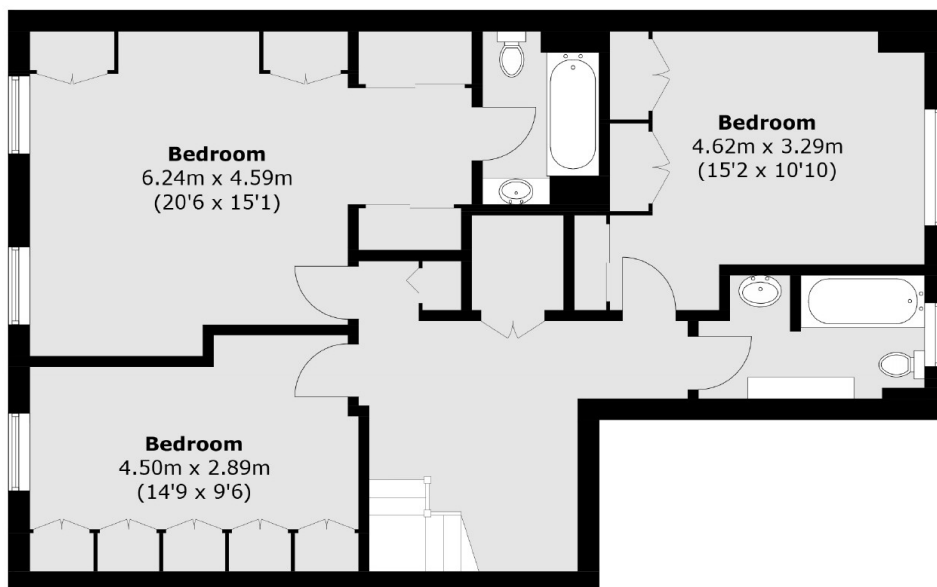


Harley Street, W1G

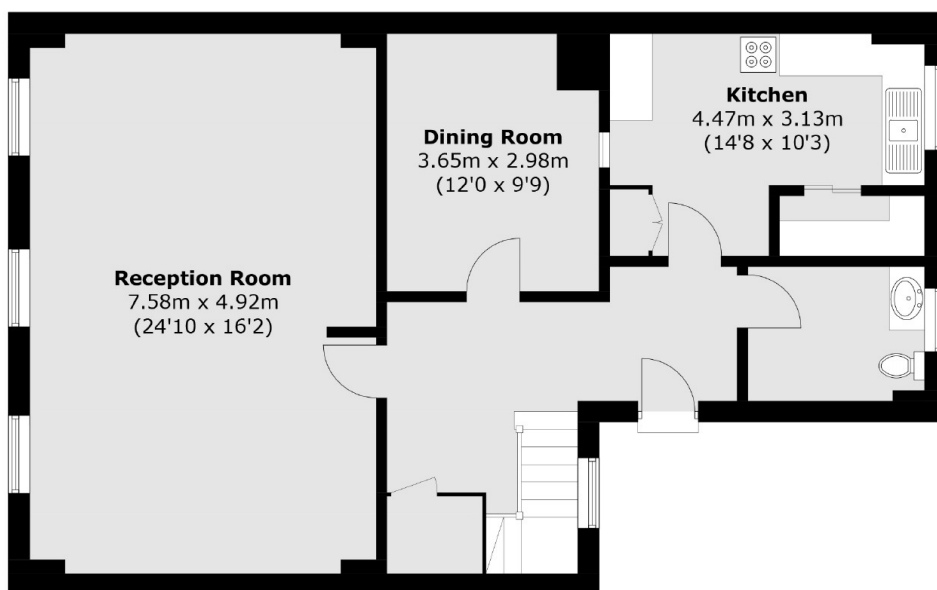
The entrance hall leads to a guest cloakroom/ utility room, a kitchen - breakfast room with walk in larder, the drawing room has three windows with a westerly aspect facing Harley Street, additionally there is a dining room that potentially could be opened to the drawing room. A turning staircase leads to the upper floor which has a main bedroom with dressing area and en suite bathroom, two further double bedrooms and a bathroom.



Harley Street, London, W1G



Second Floor



First Floor

Total area (approx.): 168.3 sq. m (1,811.8 sq. ft)