



6 Larch Hill, Douglas, Isle of Man, IM2 5NQ
Asking Price £449,950

- Immaculate Detached Family Home
- Large Private Driveway With Ample Off-Road Parking
- Three Bedrooms Upstairs Plus Ground Floor Bedroom With En-Suite
- Convenient Outskirts Of Douglas Location
- Bright Sunroom Extension Enhancing Living Space
- Move-In Ready With Flexible, Modern Accommodation



Situated in a highly convenient position on the outskirts of Douglas, 6 Larch Hill is an immaculate four-bedroom, two-bathroom detached family home that has been exceptionally well maintained and thoughtfully enhanced to provide flexible, modern living space ideal for a wide range of buyers.

The property is approached via a large private driveway, offering generous off-road parking and immediately setting the tone for the space and quality found throughout. A welcoming entrance hall leads through to a comfortable living room, perfect for everyday family life and relaxed evenings.

A particular highlight of the home is the sunroom extension, which floods the living accommodation with natural light and provides an excellent additional reception space. This versatile area works equally well as a dining space, family room or relaxing retreat, with pleasant views over the garden and seamless connection between indoor and outdoor living.

The kitchen is well laid out and practical, offering ample storage and workspace while remaining well connected to the main living areas, making it ideal for both daily use and entertaining.

One of the key features of the property is the ground floor fourth bedroom, which benefits from its own en-suite shower room. This flexible space is ideal for guests, multigenerational living, or those seeking a home office or bedroom without stairs.

To the first floor are three well-proportioned bedrooms, all presented in excellent decorative order, along with a modern family bathroom serving the upper accommodation.

Externally, the property enjoys a private and manageable garden, ideal for families and entertaining, while the location offers easy access to Douglas town centre, local schools, shops and commuter routes, all whilst enjoying the benefits of an edge-of-town setting.

This is a turn-key detached home offering space, flexibility and convenience in equal measure.

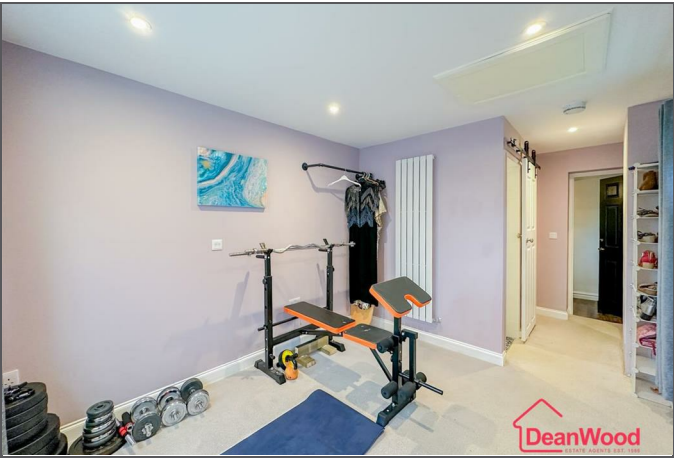












6 Larch Hill, Douglas, Isle of Man, IM2 5NQ



GROUND FLOOR
829 sq.ft. (77.0 sq.m.) approx.

1ST FLOOR
447 sq.ft. (41.5 sq.m.) approx.



TOTAL FLOOR AREA : 1276 sq.ft. (118.5 sq.m.) approx.
Not to scale for identification purposes only
Made with Metropix ©2025



DOUGLAS

37 VICTORIA STREET
DOUGLAS
ISLE OF MAN IM1 2LF

T 01624 620606
F 01624 677363
E info@deanwood.co.im

CASTLETOWN

COMPTON HOUSE
9 CASTLE STREET CASTLETOWN
ISLE OF MAN IM9 1LF

T 01624 825995
F 01624 825996
E castletown@deanwood.co.im

RAMSEY

LEZAYRE HOUSE
87 PARLIAMENT STREET
RAMSEY ISLE OF MAN IM8 1AQ

T 01624 816111
F 01624 816588
E ramsey@deanwood.co.im

These particulars are for information purposes only. They do not constitute or form any contract nor should any statement contained herein be relied upon as a representation of fact. Neither the vendor nor DeanWood Agencies Limited ('the firm'), nor any officer or employee of the firm accept liability or responsibility for any statement contained herein. The vendor does not by these particulars, nor does the firm, nor does any officer or any employee of the firm have any authority to make or give any representation or warranty whatsoever as regards the property or otherwise. It is the sole responsibility of any person interested in the property described in these particulars to make all proper enquiries and searches to verify the description of the property and all other particulars herein.

FOR MORE PROPERTIES VISIT OUR WEBSITE @ deanwood.im