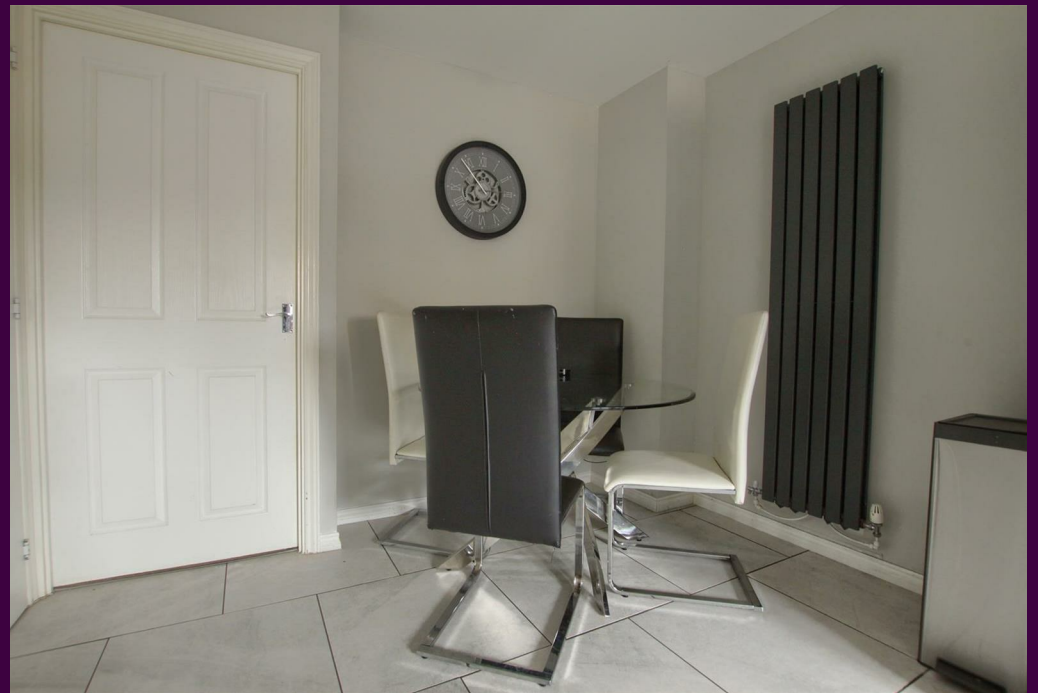


Kirkbride Way, Ingleby Barwick

£189,995

**IH** INGLEBY HOMES









Impressively spacious, this Taylor Wimpey built property offers generous accommodation over three levels and is not to be mistaken with similar looking, but smaller properties nearby.

The ground floor delivers a 17ft plus kitchen/diner, cloakroom/WC and separate, spacious rear lounge with 'French' doors to the rear conservatory, whilst the first floor brings two bedrooms, one being a very large double, and the family bathroom. A superb 'Master' level is found on the second floor with a large feature bedroom, with 'Velux' windows, and walk through dressing area with fitted sliding robes to an impressive en-suite.

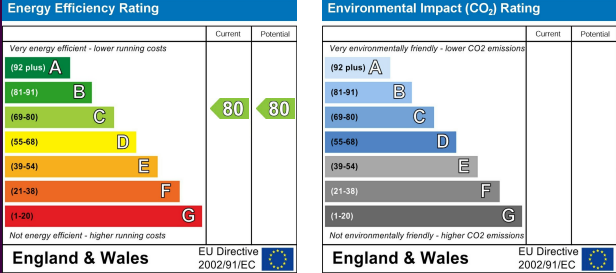


Located in this popular 'Rings' area of Ingleby Barwick and enjoying front and rear gardens, the rear being low-maintenance, with secure shed. Allocated spaces in front provide off-road parking - early inspection is highly recommended to appreciate the layout and space available.

# The Layout



Council Tax Band: C  
Tenure: Freehold



# The Location







- Especially generous accommodation over three levels
- Superb 'Master' suite of large bedroom, dressing area, and ensuite
- Favoured 'Rings' location within Ingleby Barwick
- 17ft kitchen/diner, separate lounge and conservatory
- Enclosed gardens, off-road parking
- Viewing advised





[www.ingleby-homes.co.uk](http://www.ingleby-homes.co.uk)  
01642 671025

**IH** INGLEBY HOMES