



The Cottrells, Angmering

Freehold

End of Terrace Cottage • Character Property • Renovated To A High Standard • Located In The Heart Of Angmering Village • South Facing Garden • Backing onto Allotments • Two Double Bedrooms

Cooper Adams

Set in a quiet cul-de-sac just off Angmering High Street, this charming end-of-terrace cottage is ideally located within easy walking distance of the village square, shops and cafés.

Beautifully updated throughout, the house offers bright open-plan living and dining space, alongside a stylish shaker-style kitchen with solid worktops and a timeless finish.

The south-facing rear garden is a particular highlight, designed in a traditional cottage style with mature planting and a peaceful outlook over the village allotments, giving a wonderful sense of privacy.

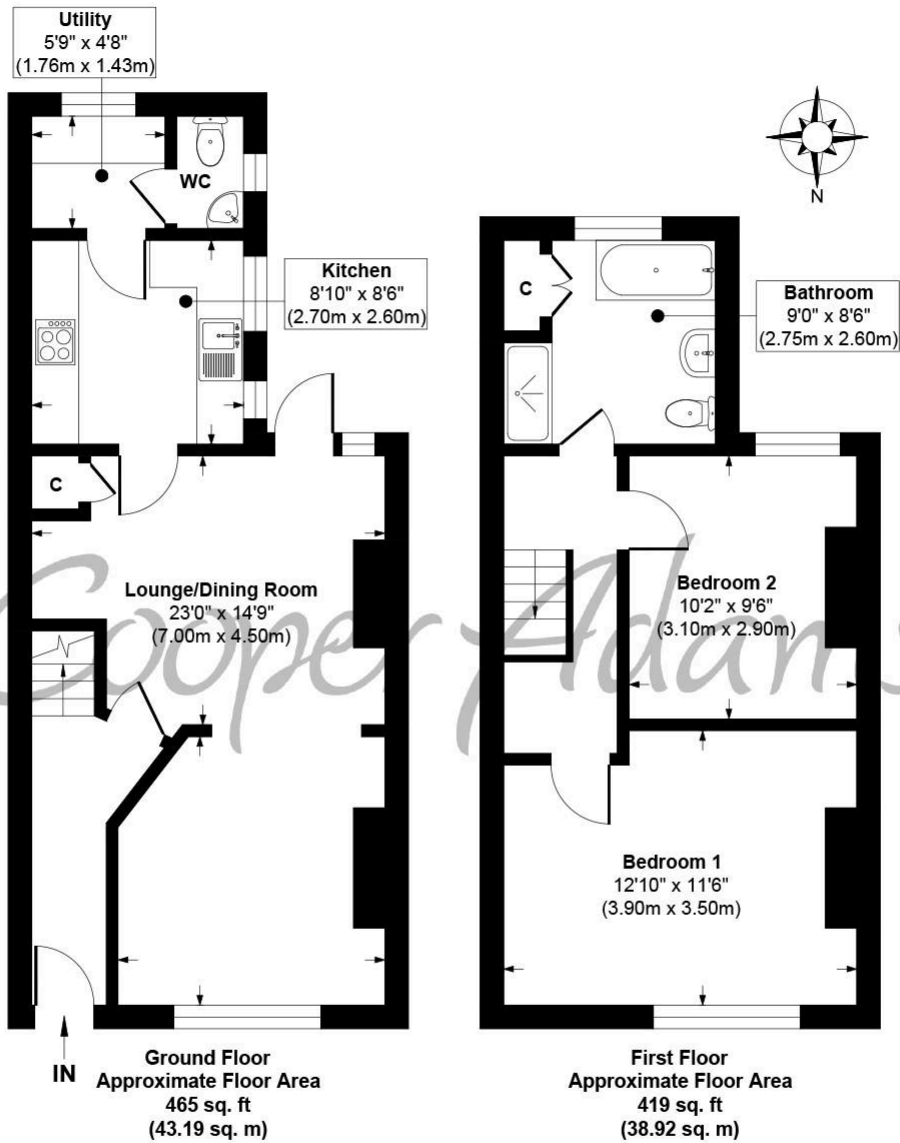
Upstairs are two generous double bedrooms, including a spacious principal bedroom with built-in wardrobes.

A beautifully maintained home combining village-centre convenience with peace and privacy.



Angmering, a charming village near the South Downs, offers shops, schools, a health club, and a golf course. Beaches are within 2 miles, and nearby shopping is available in Rustington and Worthing. Angmering station connects to London, Brighton, and more, with Gatwick 40 miles away and easy access to the A27 and A24 roads.





The Cottrells, Angmering, West Sussex, BN16 4AF
Approx. Gross Internal Floor Area 884 sq. ft / 82.11 sq. m

Illustration for identification purposes only, measurements are approximate, not to scale

Copyright © Cooper Adams



You can include any text here. The text can be modified upon generating your brochure.

Material Information includes important facts that may affect a buyer's decision to view or buy, such as tenure, restrictions, utilities, construction, and other key details. Full information for this property is available at www.cooper-adams.com. We may offer buyer services and receive referral benefits - details on request. All content is copyright Cooper Adams. Details and floor plans are for guidance only and don't form part of any contract. Measurements are maximums including bays and alcoves. Floor plan sizes are approximate. Images, maps and plans are not to scale. Appliances/services not tested. Cooper Adams Estates Ltd, Bishopstone. Reg No: 07127482. VAT No: 982847172.

Lettings | Sales | Free valuations | Land & New Homes | Mortgages

FULL DETAILS OF THE MATERIAL INFORMATION ARE ON OUR WEBSITE - VIEWING STRICTLY BY APPOINTMENT WITH COOPER ADAMS

FOR MORE PHOTOS AND TO BOOK A VIEWING VISIT OUR WEBSITE - Tel: 01903 791 792 - www.cooper-adams.com