



## Heathfield Park, NW2

Share of Freehold - £365,000

For Sale and offered CHAIN FREE is this two bedroom Top Floor conversion in this charming terraced house with Share of Freehold offering 590 sq ft of well-laid-out living space.

The accommodation is flooded with natural light and comprises a spacious 21 ft open-plan kitchen/reception room with fitted appliances and wooden flooring, as well as two double bedrooms served by a three-piece bathroom.

Heathfield Park is located within walking distance of all the shops and eateries in the area. Excellent transport links include Willesden Green (Jubilee Line – Zone 2) and Brondesbury (Overground – Zone 2). The tranquil 84-acre Gladstone Park is also nearby, offering a variety of recreational facilities.

- 2 bedroom Top Floor Flat conversion
- 590 sq ft of living accommodation
- Open plan 21 ft reception/kitchen area
- COUNCIL: Brent (D)



020 7328 2828

[enquiries@cameronsstiff.co.uk](mailto:enquiries@cameronsstiff.co.uk)

[cameronsstiff.co.uk](http://cameronsstiff.co.uk)

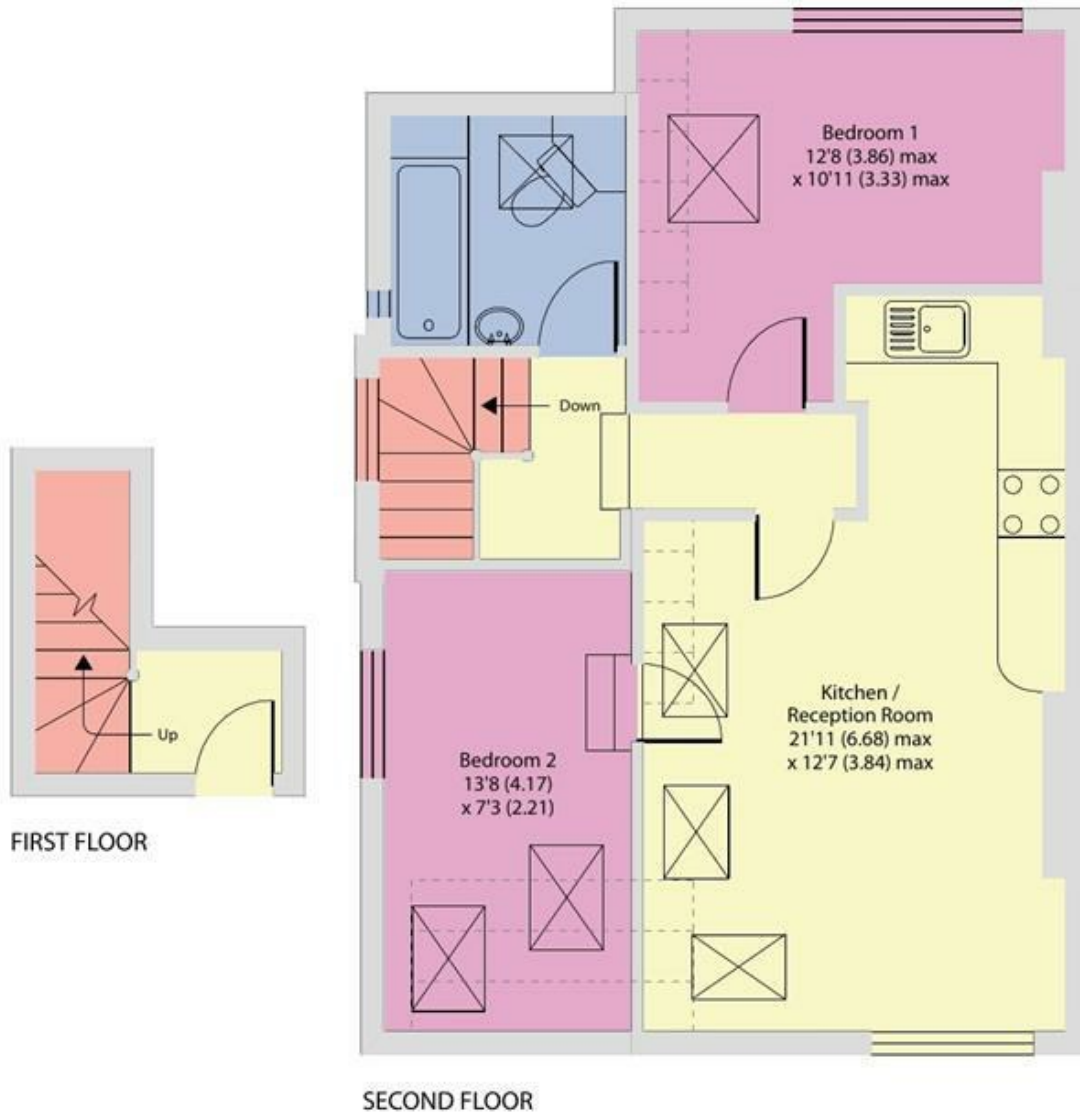
## Heathfield Park, London, NW2

Approximate Area = 590 sq ft / 54.8 sq m (excludes restricted head height)

For identification only - Not to scale



Denotes restricted head height



EPC: D

Ref: 19579940



Floor plan produced in accordance with RICS Property Measurement 2nd Edition, Incorporating International Property Measurement Standards (IPMS2 Residential). © nctechcom 2025. Produced for Camerons Stiff & Co. REF: 327396

