



**Sandringham Close  
Hove, BN3 6XE**

**FERMERS**



3



2



1



**TENURE**  
Freehold

**EPC RATING**  
C

**COUNCIL TAX BAND**  
E



**Energy Efficiency Rating**

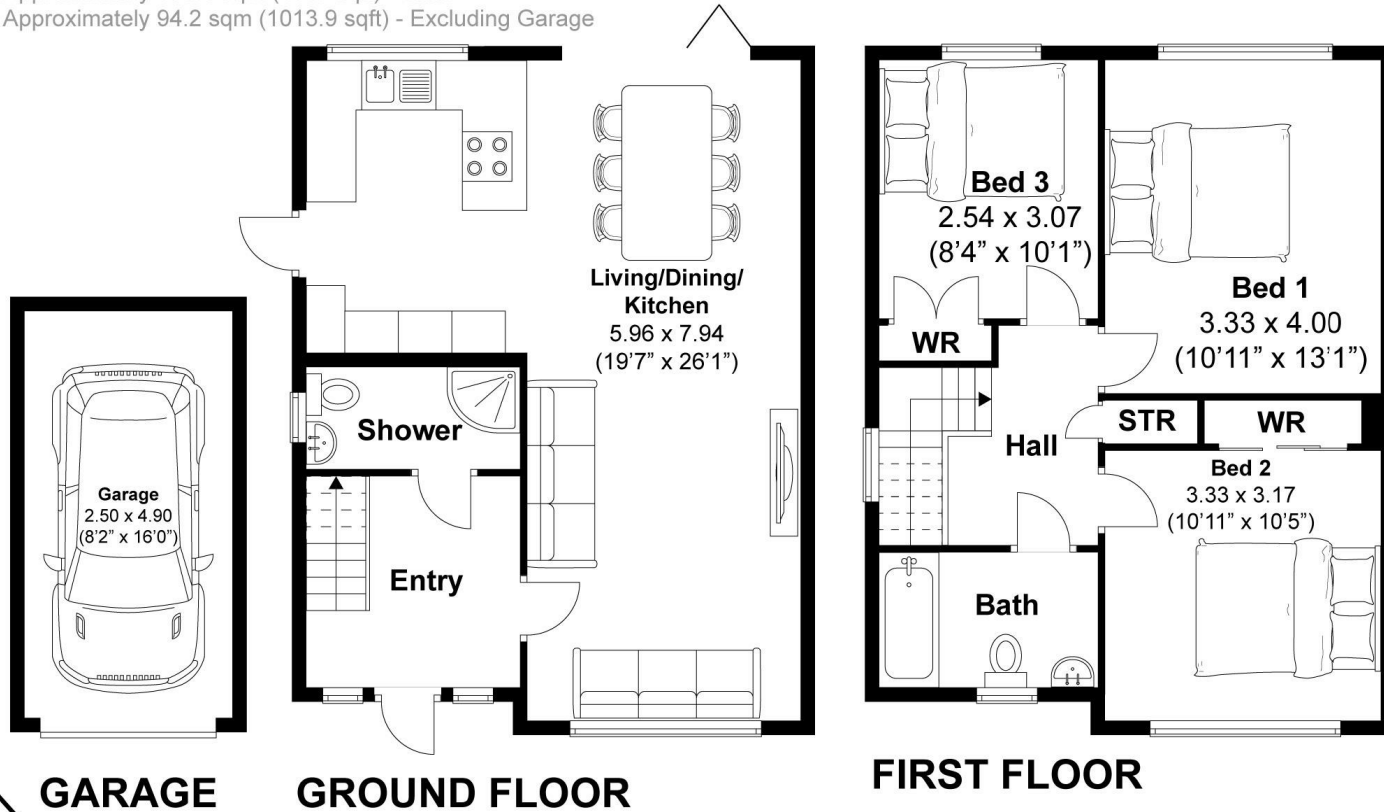
	Current	Potential
Very energy efficient - lower running costs		
(92 plus) <b>A</b>		
(81-91) <b>B</b>		
(69-80) <b>C</b>	<b>73</b>	<b>78</b>
(55-68) <b>D</b>		
(39-54) <b>E</b>		
(21-38) <b>F</b>		
(1-20) <b>G</b>		
Not energy efficient - higher running costs		



# Sandringham Close

## Sandringham Close, Hove

Approximately 106.5 sqm (1147 sqft) - Total  
 Approximately 94.2 sqm (1013.9 sqft) - Excluding Garage



**Disclaimer:**

The measurements are approximate and are for illustration purposes only.  
 The dimensions are measured internally and in metres and feet. We do not take any responsibility for errors and/or omissions.  
 If you require further verification please discuss with the buyer/owner of the property.



**FERMERS**

**OFFICE ADDRESS**

67 Queen Victoria Avenue  
 Hove  
 East Sussex  
 BN3 6XA

**OFFICE DETAILS**

01273 541 177  
 sales@fermers.co.uk  
 www.Fermers.co.uk

Agents Note: Whilst every care has been taken to prepare these particulars, they are for guidance purposes only. All measurements are approximate and are for general guidance purposes only and whilst every care has been taken to ensure their accuracy, they should not be relied upon and potential buyers/tenants are advised to recheck the measurements