

Devonshire Street, W1G

£692 Per week








A contemporary styled apartment located in a period residential block with a porter and two passenger lifts. Located in a prime central London location with the world class amenities of Marylebone High Street and Regents Park on the doorstep.

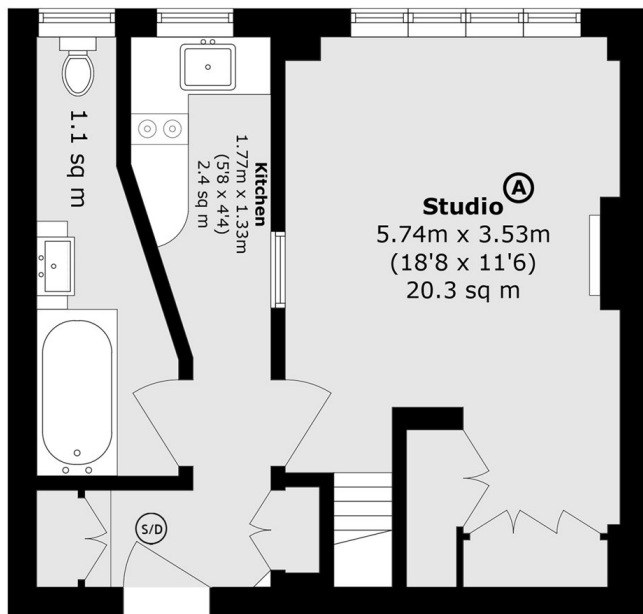
Located in the centre of Marylebone Village at the junction of the High Street and Devonshire Street. Local Stations are sited at Baker Street, Bond Street and Regents Park.

Features

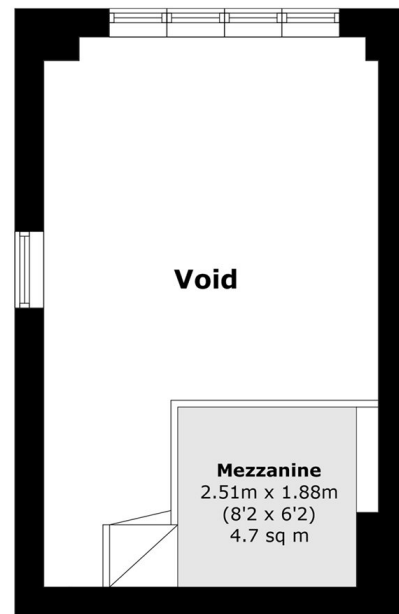
- Studio Flat
- First Floor
- Mezzanine Level
- Portered building
- Residents Terrace
- Marylebone Village

Devonshire Street, London, W1G

-  S/D Smoke Detector
-  F/B Fire Blanket
-  Fire Exit
-  F/E Fire Extinguisher
-  H/D Heat Detector
-  B Boiler
-  Co/D Carbon Monoxide Detector



First Floor



Mezzanine

Total area (approx.): 54.9 sq. m (590.9 sq. ft)
(Excluding Void)

National Guidelines (may differ depending on Local Authority).

- E) Less than 4.6 square meters = no one
- D) 4.6 - 6.5 square meters = 1/2 person (Child up to 10 years)
- C) 6.5 - 8.4 square meters = 1 person
- B) 8.4 - 10.2 square meters = 1 1/2 people
- A) More Than 10.2 meters = 2 people