



**Guide Price**  
**£550,000**

**Freehold**

4x  2x  1x 

**Brambling Avenue,  
Finberry, Ashford, Kent,  
TN25**

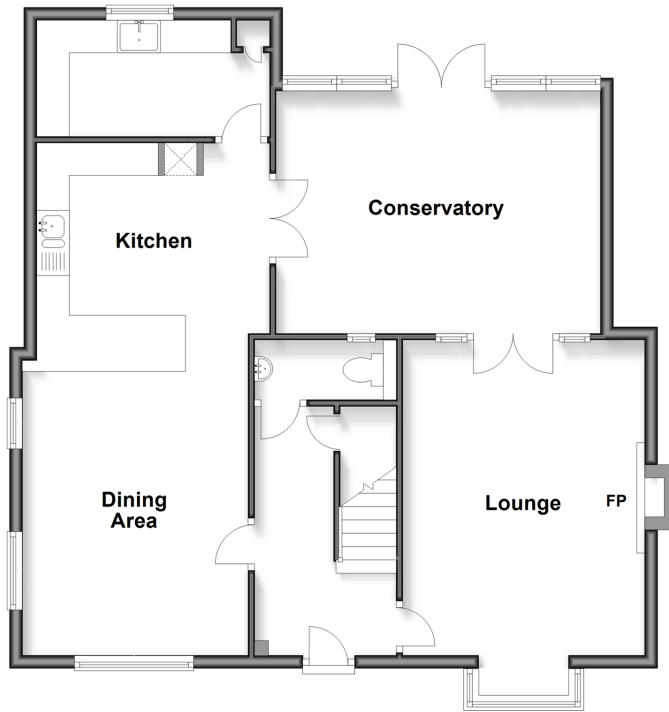
**OVER 60?**

Secure this property  
for up to **59% less!**

*Wards*  
Helping you move forwards

### Ground Floor

Approx. 83.7 sq. metres (900.8 sq. feet)



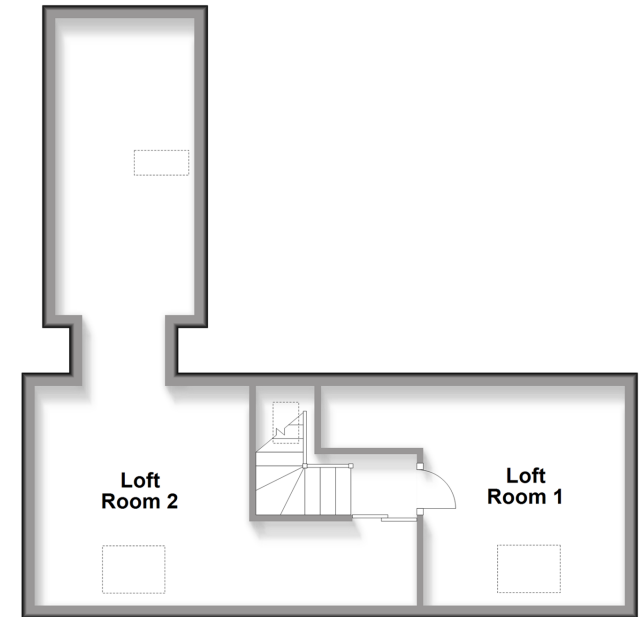
### First Floor

Approx. 64.0 sq. metres (688.8 sq. feet)



### Second Floor

Approx. 41.8 sq. metres (449.5 sq. feet)



## Accommodation

### GROUND FLOOR

Entrance Hallway  
Cloakroom  
Dining Area: 15'0 x 11'6 (4.58m x 3.51m)  
Kitchen: 11'10 x 10'9 (3.61m x 3.28m)  
Utility Room  
Conservatory : 16'4 x 11'8 (4.98m x 3.56m)  
Lounge: 15'1 x 11'1 (4.60m x 3.38m)

### FIRST FLOOR

Landing  
Bedroom 1: 15'4 x 12'8 (4.68m x 3.86m)  
En-Suite Shower Room  
Bathroom  
Bedroom 2: 11'1 x 10'8 (3.38m x 3.25m)  
Bedroom 4: 8'5 x 7'0 (2.57m x 2.14m)  
Bedroom 3: 11'1 x 8'6 (3.38m x 2.59m)

### SECOND FLOOR

Loft Room 1  
Loft Room 2

### OUTSIDE

Front & Rear Gardens  
Garage & Driveway



## Main features

- Exceptional family house
- Flexible living and home office space
- Peaceful setting
- Excellent London connections
- Immaculate throughout



### Nearest Schools

Primary Schools: East Stour Primary 0.8 miles, Furley Park Primary 0.9 miles, Kingsnorth C of E Primary 1.3 miles.  
Secondary Schools: John Wallis C of E Academy, Ashford 1.7 miles, The North School 1.7 miles, The Norton Knatchbull School 1.9 miles.



### Transport Information

Train Stations: Ashford International 1.9 miles, Ham Street 3.8 miles, Wye 4.8 miles



### Address

Brambling Avenue, Finberry, Ashford, Kent, TN25



### Directions

For directions to this property please contact us.



*Wards*  
Helping you move forwards

Call Ashford Branch 01233 639531 ■ [wardsofkent.co.uk](http://wardsofkent.co.uk)



■ Through a Homewise Home For Life Plan people aged 60+ can secure this property for up to 59% less, by purchasing a Lifetime Lease



12243673/20260508/DP/LS1