

# clever



## 7 Beatrice Avenue

Keyham, Plymouth, PL2 1NU

**Offers over £210,000**

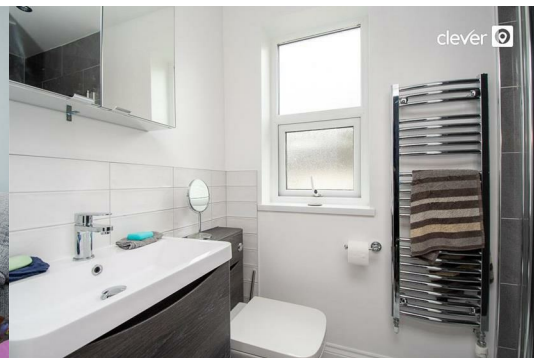
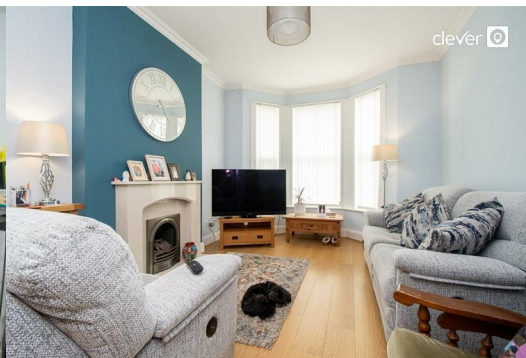


Welcome to this charming mid-terrace house located on Beatrice Avenue in the desirable area of Keyham, Plymouth. This substantial property, built in 1910, offers a generous living space of 818 square feet, making it an ideal home for first time buyers & families.

As you enter, you will find a lovely large lounge dining room that provide ample space for relaxation and entertaining. The layout is both practical and spacious, allowing for a comfortable lifestyle. The heart of the home is undoubtedly the beautiful kitchen, which has been thoughtfully designed to cater to modern living while retaining a sense of character.

The property boasts three well-proportioned bedrooms, providing plenty of room for family members or guests. The bathroom is conveniently located upstairs, ensuring ease of access for all.

Situated in a desirable location, this home is close to the historic dockyard, offering a unique blend of convenience and charm. Keyham is known for its community spirit and accessibility to local amenities, making it a sought-after area for families and professionals alike.





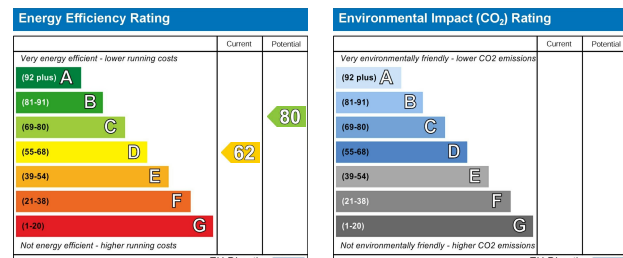
## Area Map



## Floor Plans



## Energy Efficiency Graph



These particulars, whilst believed to be accurate are set out as a general outline only for guidance and do not constitute any part of an offer or contract. Intending purchasers should not rely on them as statements of representation of fact, but must satisfy themselves by inspection or otherwise as to their accuracy. No person in this firm's employment has the authority to make or give any representation or warranty in respect of the property.