



SARAH O'LEARY

exp[®] UK

@ sarah.oleary@exp.uk.com

🌐 saraholeary@exp.uk.com

☎ 07572 961 815

Flat 19, Lingfield Court, Blount Road

Guide Price £300,000

🛏️ 2 🍽️ 1 🚗 1



Welcome to this immaculate and beautiful flat that is currently up for sale! This property is a gem, offering two spacious double bedrooms, one reception room with an awe-inspiring sea view, and a kitchen that is just waiting for you to whip up your favourite meals.

From the moment you step into this flat, you will be captivated by the quality and attention to detail. The property is in pristine condition, which is evident in every corner and crevice. The reception room is a real highlight, boasting large windows that drench the space in natural light and offer a breathtaking sea view. Whether you're lounging around with a good book or hosting a gathering of friends, this room is sure to be the heart of your new home.

This home's spacious modern kitchen, designed to blend function with modern day living is just oozing with character. The kitchen boasts sleek countertops, contemporary cupboards, and some built in appliances—perfect for everything!

Similarly, the bathroom, modern and light, is sure to meet your needs with clean lines and quality fixtures.

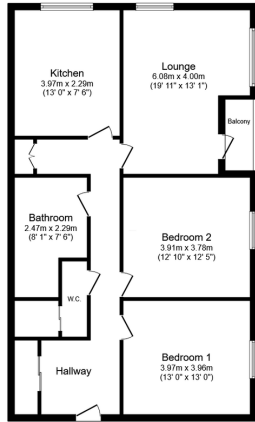
The property comes with some additional unique features that make it stand out from the crowd. It has a single garage, providing secure parking or extra storage space. There's also a balcony, just imagine sipping your morning coffee while taking in the sea view!

Another advantage of this property is its location. Placed within easy reach of local amenities, you'll have everything you need right at your doorstep. Plus, it's close to green spaces, perfect for those peaceful weekend strolls.

The property has an EPC rating of 'C' and falls under council tax band 'D'.

In conclusion, this flat is more than just a home; it's a lifestyle. It's about the sea view that greets you every morning, the convenience of local amenities, a great selection of vibrant restaurants, cafe's and bars and the tranquility of nearby green spaces. It's all waiting for you to make it your own, and if it's not there, you probably won't need it!





Floor Plan
Floor area 91.9 sq.m. (990 sq.ft.)

Total floor area: 91.9 sq.m. (990 sq.ft.)

This floor plan is for illustrative purposes only. It is not drawn to scale. Any measurements, floor area (including any total floor area), openings and orientations are approximate. No details are guaranteed, they cannot be relied upon for any purpose and do not form any part of any agreement. No liability is taken for any error, omission or misstatement. A party must rely upon its own inspection(s). Powered by www.Propertybox.io

- PLEASE QUOTE REF SO0891
- GUIDE PRICE £300,000 TO £325,000
- FULLY RENOVATED 2024 INCLUDING ELECTRICS AND PLUMBING
- AWE INSPIRING SEA VIEWS
- A TRUE TURN KEY PROPERTY
- GARAGE
- LARGE WINDOWS OFFERING A BUNDLE OF NATURAL LIGHT
- TWO DOUBLE BEDROOMS
- EPC GRADE C
- COUNCIL TAX BAND D

