

**RUSH
WITT &
WILSON**



RUSH
WITT &

**Shearfold Catsfield Road, Battle, TN33 9JA
£699,950 Freehold**

Enjoying a peaceful position within a private enclave of just two individually designed homes, this impressive four-bedroom detached house offers generous family living in the heart of the desirable village of Ninfield. The property combines timeless architecture with modern comfort and style, all set against a backdrop of rolling countryside views. The accommodation is spacious and thoughtfully arranged, with three reception rooms providing versatility for family life, working from home, or entertaining. The large sitting room features double doors opening onto the garden and a central wood-burning stove, while the formal dining room and separate study enhance the flow and function of the ground floor. The expansive kitchen/breakfast room is a standout feature, fitted with a range of integrated appliances and offering French doors to the rear garden perfect for indoor-outdoor living. A utility room and downstairs WC add further convenience. Upstairs, all four bedrooms are generously proportioned doubles, each with built-in wardrobes. The principal suite enjoys views over the garden and countryside beyond, along with a sleek en suite bathroom. A well-appointed family bath/shower room serves the remaining bedrooms. Outside, the home sits behind a stone driveway providing ample parking and access to a detached double garage with power and lighting. The rear and side gardens stretch to around 100ft and are laid mainly to lawn, with a raised patio and decking area ideal for al fresco dining and capturing the evening sun. With solar panels, a double garage, stunning views, and a location that offers village charm with easy access to Battle's mainline station and schooling, this is a rare opportunity to acquire a high-quality family home in a sought-after rural setting.







RUSH
WITT &
WILSON



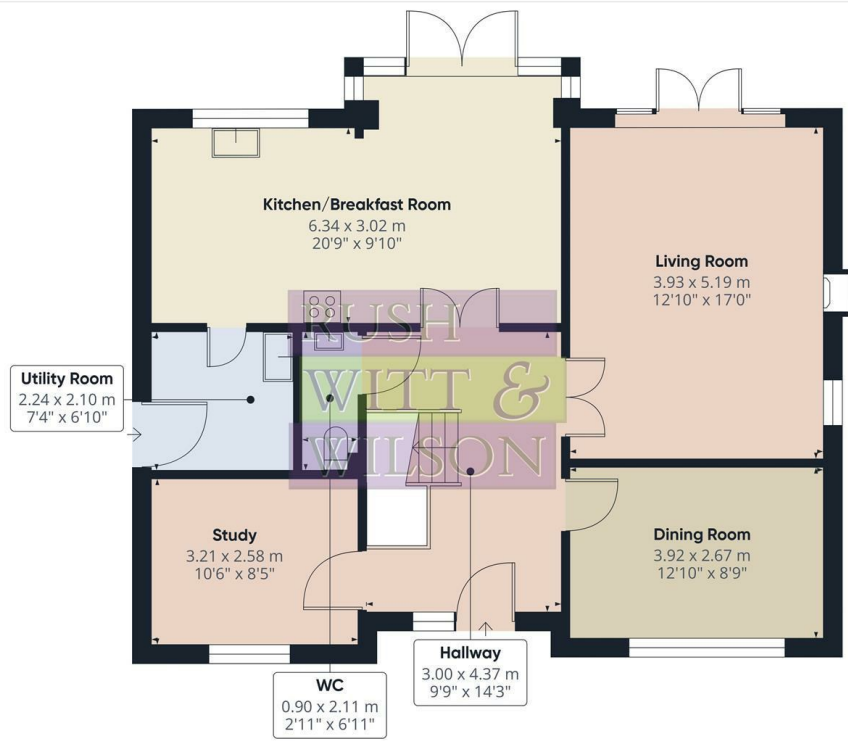
RUSH
WITT &
WILSON



RUSH
WITT &
WILSON



RUSH
WITT &
WILSON



Floor 0 Building 1

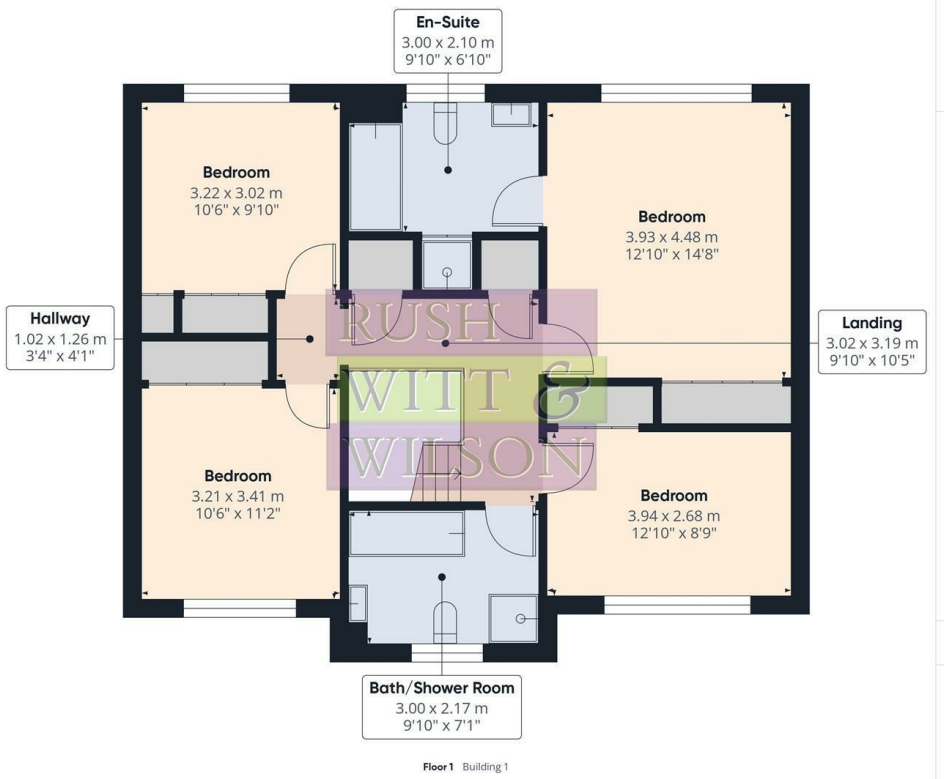
RUSH WITT & WILSON

Approximate total area⁽¹⁾
81.9 m²
881 ft²

(1) Excluding balconies and terraces

Calculations reference the RICS IPMS 3C standard. Measurements are approximate and not to scale. This floor plan is intended for illustration only.

GIRAFFE360



Floor 1 Building 1

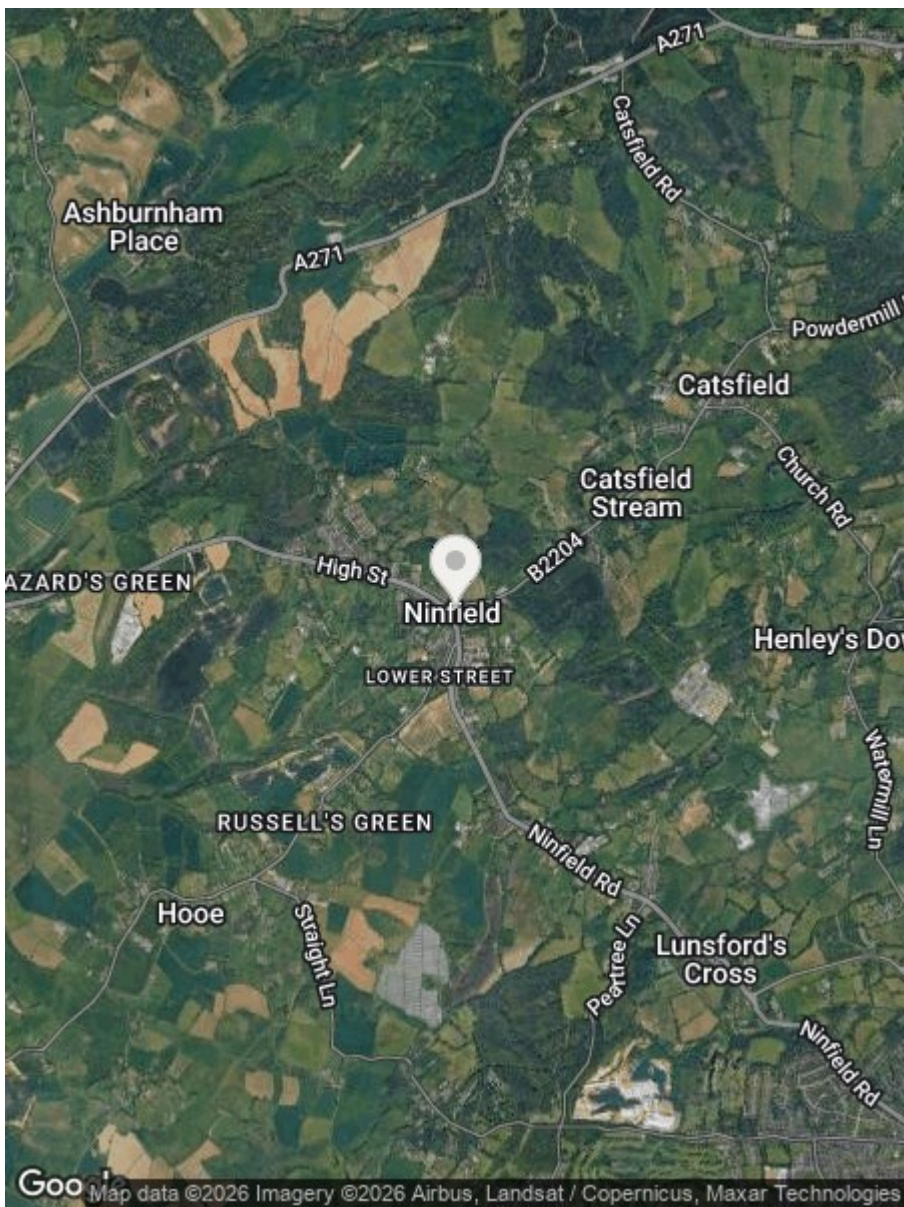
RUSH WITT & WILSON


Approximate total area⁽¹⁾
77.4 m²
835 ft²


(1) Excluding balconies and terraces

Calculations reference the RICS IPMS 3C standard. Measurements are approximate and not to scale. This floor plan is intended for illustration only.

GIRAFFE360



Energy Efficiency Rating		
	Current	Potential
Very energy efficient - lower running costs		
(92 plus) A		
(81-91) B		
(69-80) C		
(55-68) D		
(39-54) E		
(21-38) F		
(1-20) G		
Not energy efficient - higher running costs		
	68	79
England & Wales	EU Directive 2002/91/EC 	

Environmental Impact (CO ₂) Rating		
	Current	Potential
Very environmentally friendly - lower CO ₂ emissions		
(92 plus) A		
(81-91) B		
(69-80) C		
(55-68) D		
(39-54) E		
(21-38) F		
(1-20) G		
Not environmentally friendly - higher CO ₂ emissions		
England & Wales	EU Directive 2002/91/EC 	

None of the services or appliances mentioned in these sale particulars have been tested.

It should also be noted that measurements quoted are given for guidance only and are approximate and should not be relied upon for any other purpose.

Council Tax Band – tba

A property may be subject to restrictive covenants and a copy of the title documents are available for inspection.

If you are seeking a property for a particular use or are intending to make changes please check / take appropriate legal advice before proceeding.

**RUSH
WITT &
WILSON**

Residential Estate Agents
Lettings & Property Management



88 High Street
Battle
TN33 0AQ
Tel: 01424 774440
battle@rushwittwilson.co.uk
www.rushwittwilson.co.uk