

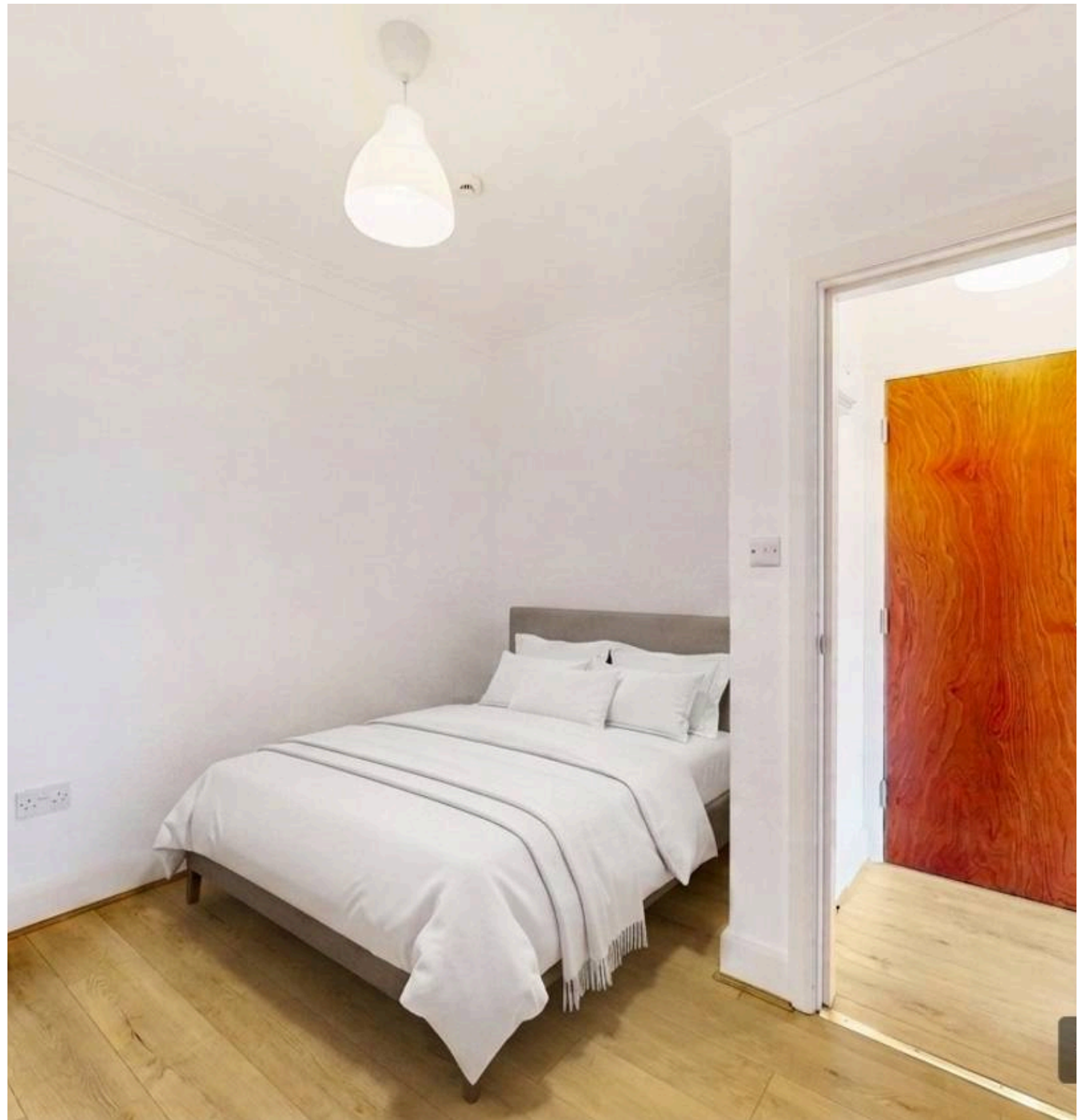


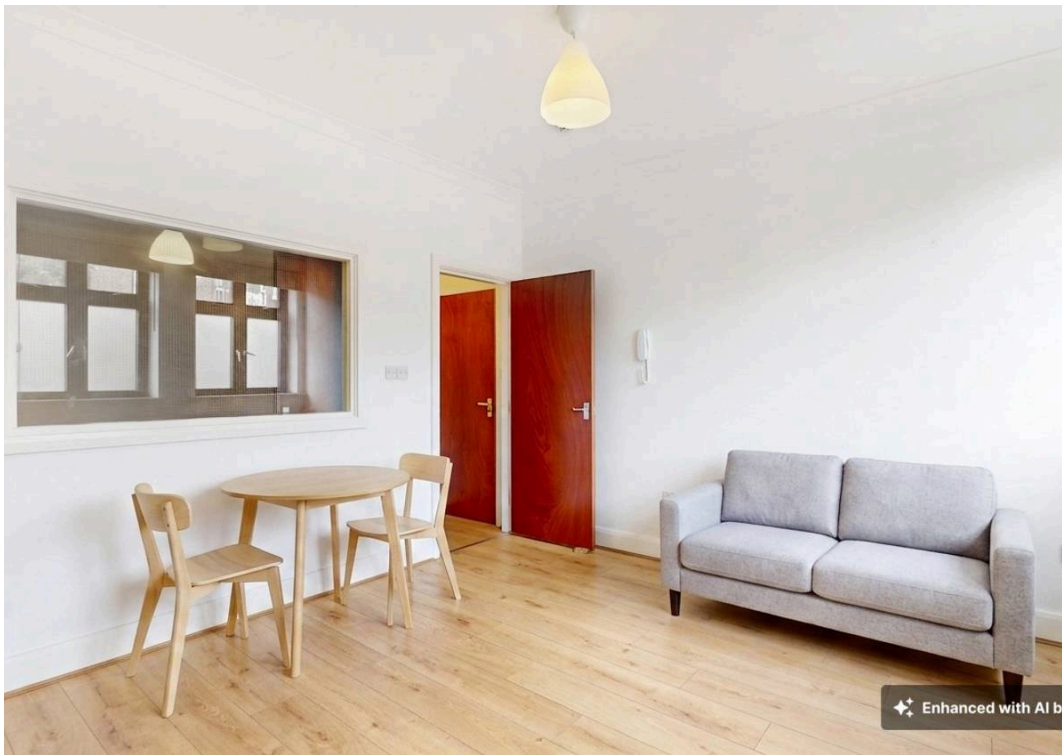
Enhanced with AI by STREET.S

Burnley Road, Dollis Hill, NW10
£1,475 pcm

Burnley Road, Dollis Hill, NW10

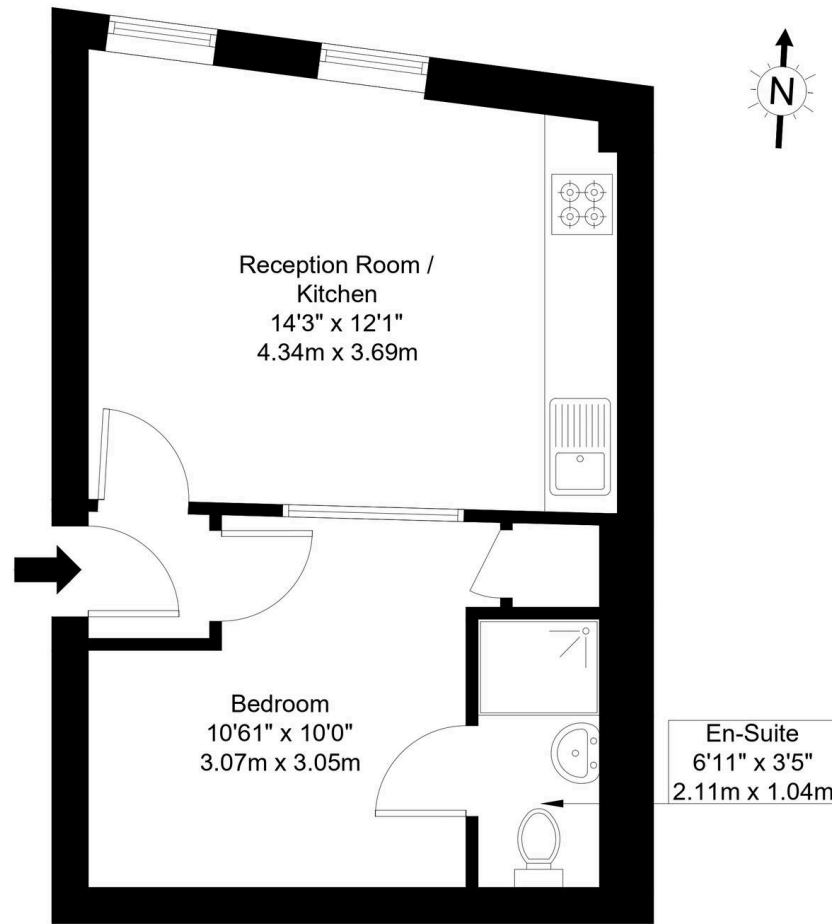
Virtually Staged-A spacious one bedroom apartment a short walk from Dollis Hill Tube (JUBILEE LINE). The property has bright neutral décor, wood floors throughout and a separate bedroom modern fitted kitchen and tiled bathroom. The property is available in August. This is great value for money property and quick viewings are highly recommended.





Burnley Road, NW10 1ED

Approx Gross Internal Area = 29.10 sq m / 313 sq ft



Ground Floor

Ref :

Copyright **BLEU PLAN**

The Floor plan is not to scale and measurements and areas shown are approximate and therefore should be used for illustrative purposes only. The plan has been prepared in accordance with the RICS code of Measuring Practice and whilst we have confidence in the information produced it must not be relied on. Maximum lengths and widths are represented on the floor plan. If there is any aspect of particular importance, you should carry out or commission your own inspection of the property.
Copyright @ BleuPlan



Black Katz

22 West Hampstead Mews, London - NW6 3BB

02073285000 • Thomas@blackkatz.com • blackkatz.com/