



Crimscott Street, SE1

£900,000

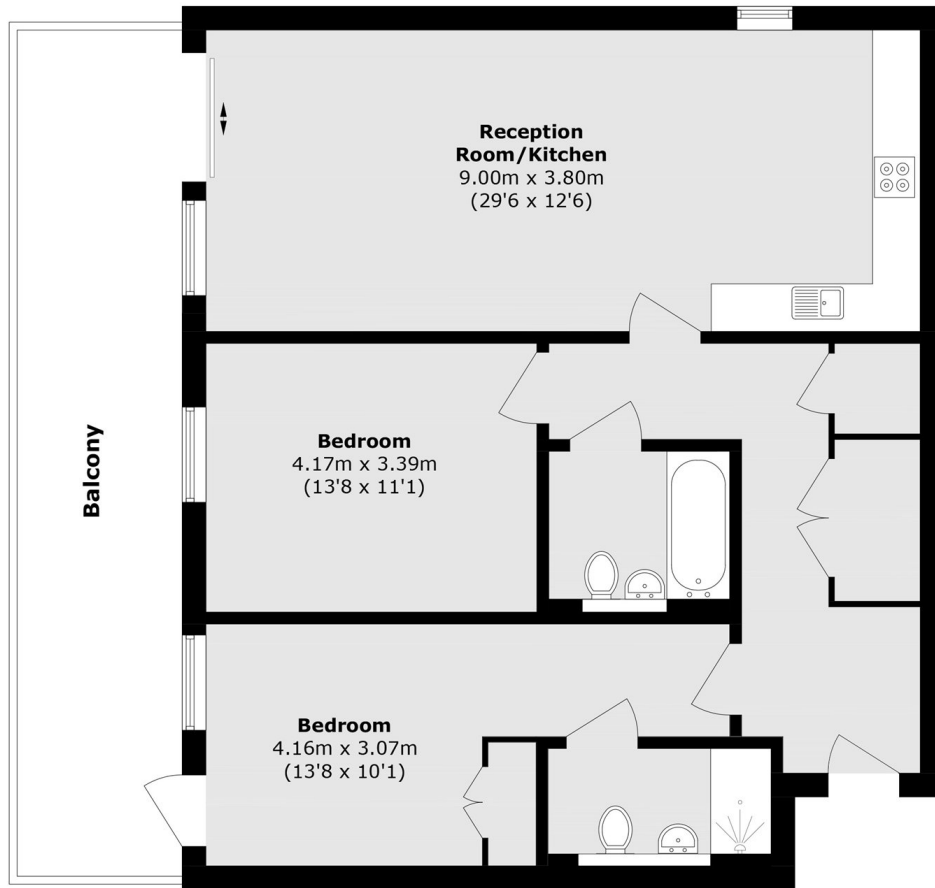
Stamp Duty Contribution Paid By Developer - Subject To Conditions Print Makers, a limited collection of apartments located in vibrant Bermondsey with exceptional views of London. Voted one of the best places to live in the capital, these apartments offer an opportunity to experience a buzzing lifestyle with an easy commute.

Close to Borough Market, Bermondsey Street and London Bridge there are endless ways to fill your leisure time. With Canary Wharf only 20 minutes away and the City within walking distance, this is the perfect location for an exciting London life.

Features

- Large Roof Terrace/Balcony
- Two Double Bedrooms
- Two Bathrooms
- 10 minutes to London Bridge Station
- Access To Communal Terrace
- Ready To Move Into!
- £0 ground rent
- Integrated Appliances
- Underfloor Heating
- Heat Recovery System

Crimscott Street,
Bermondsey, SE1



Total area (approx.): 92.6 sq. m (996.7 sq. ft)

Balcony area (approx.): 22.1 sq. m (237.8 sq. ft)