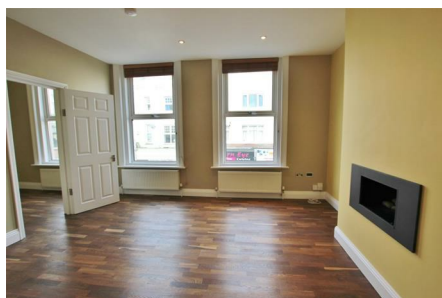


Christchurch Road, Boscombe, Bournemouth, Dorset, BH1 4AG



£800 Per Calendar Month




STYLISH MODERN ONE BED FLAT - FIRST FLOOR - EASY
ACCESS TO SHOPS AND BUS ROUTE TO TOWN -
MODERN KITCHEN WITH APPLIANCES - IDEAL FOR
SINGLE PROFESSIONAL OR COUPLE

This one bedroom first floor flat has been finished to a very high standard throughout. The modern kitchen comes with fitted appliances too. The kitchen opens onto the lounge which has stylish wooden floors and contemporary feature fireplace. The bedroom is a good size and has a high ceiling for a feeling of extra space and light. The shower room has been tiled throughout and has a walk-in shower as well as a modern style toilet and basin.

The property has a new central heating system too. We feel this would be an ideal rental for anyone working close to Boscombe or needing to have good access to Bournemouth Town by bus.

Unfurnished

Energy Efficiency Rating		Current	Potential
Very energy efficient - lower running costs			
(92 plus) A			
(81-91) B			
(69-80) C			
(55-68) D			
(39-54) E			
(21-38) F			
(1-20) G			
Not energy efficient - higher running costs			
England & Wales	EU Directive 2002/91/EC		

Environmental Impact (CO ₂) Rating		Current	Potential
Very environmentally friendly - lower CO ₂ emissions			
(92 plus) A			
(81-91) B			
(69-80) C			
(55-68) D			
(39-54) E			
(21-38) F			
(1-20) G			
Not environmentally friendly - higher CO ₂ emissions			
England & Wales	EU Directive 2002/91/EC	