



# Neal Street

London, WC2H

Asking Price £675,000

Discover the perfect blend of heritage and modern living in this beautifully proportioned one-bedroom apartment on historic Neal Street. Bathed in natural light from striking original sash windows, this first-floor gem captures the vibrant spirit of Covent Garden while offering a peaceful retreat above its charming cobbled street.

**CHESTERTONS**





# Neal Street

## London, WC2H

### THE PROPERTY

The elegant reception room flows seamlessly into a well-appointed kitchen, creating an inviting space for entertaining. Impressive ceiling heights enhance the sense of space throughout, while the feature fireplace adds warmth and character. Presented in excellent condition, this delightful home has been thoughtfully maintained and is ready to welcome its new owner.



## THE LOCATION

Few addresses rival the convenience and cultural richness of Neal Street. Step outside to find yourself moments from the Royal Opera House, world-class theatres, and the iconic Piazza. From independent boutiques to Michelin-starred restaurants, everything Covent Garden offers is on your doorstep. Covent Garden and Leicester Square stations provide exceptional connectivity across London.

## PERFECT FOR:

The discerning buyer seeking a characterful first home or sophisticated pied-à-terre in one of London's most coveted postcodes—where every day feels like living at the centre of it all.

---

**Tenure:** Leasehold 83 years  
**Service Charge:** £2,000 per year  
**Ground Rent:** £200 per year  
**Local Authority:** Camden  
**Council Tax Band:** D

Score	Energy rating	Current	Potential
92+	A		
81-91	B		
69-80	C		
55-68	D	70 C	72 C
39-54	E		
21-38	F		
1-20	G		

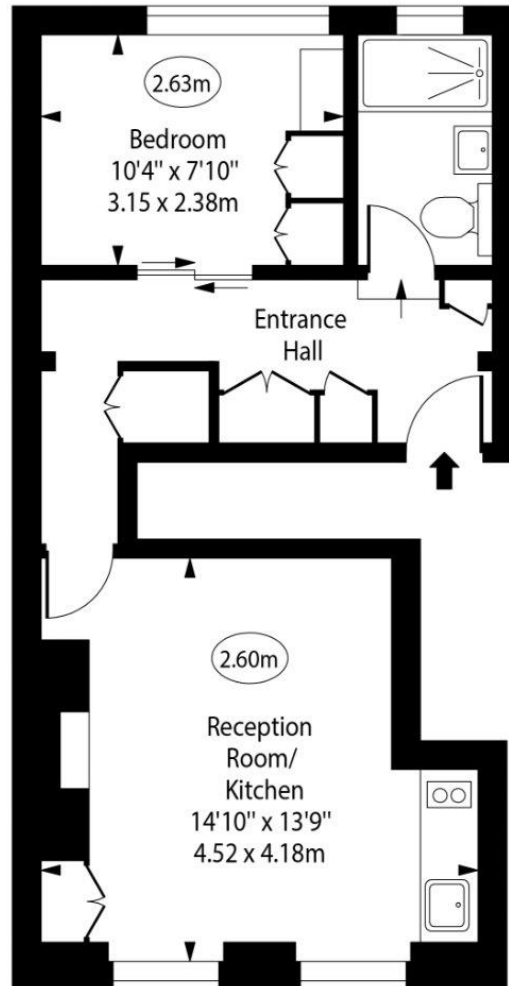
---

## *Chestertons Covent Garden Sales*

196 Shaftesbury Avenue  
London  
WC2H 8JF  
coventgarden@chestertons.co.uk  
020 3040 8300  
[chestertons.co.uk](https://www.chestertons.co.uk)

Neal Street

○ - Ceiling Height



First Floor

Approx Gross Internal Area      405 Sq Ft - 37.62 Sq M

Every attempt has been made to ensure the accuracy of the floor plan shown.  
However, all measurements, fixtures, fittings, and data shown are approximate interpretations and  
for illustrative purposes only. Measured according to the RICS. Not To Scale.

[www.goldlens.co.uk](http://www.goldlens.co.uk)

Ref. No. 030541J

