



Waterside | | Evesham | WR11 1JX

Offers Over £100,000

COOPER & CO

Key features

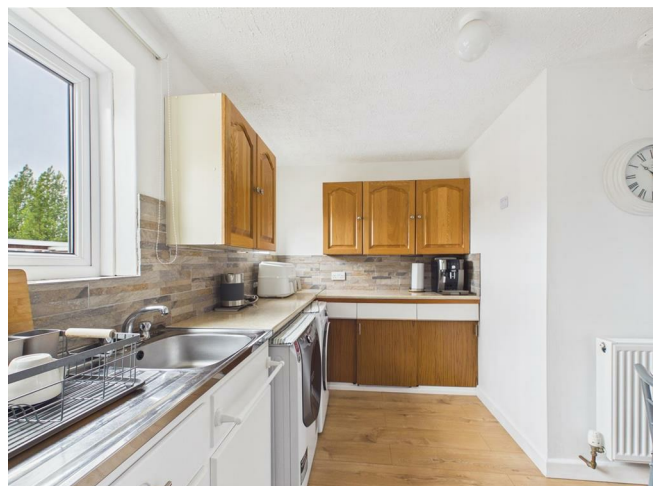
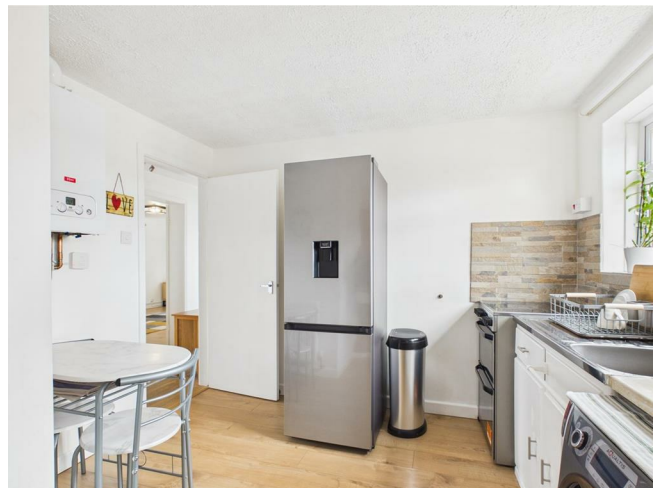
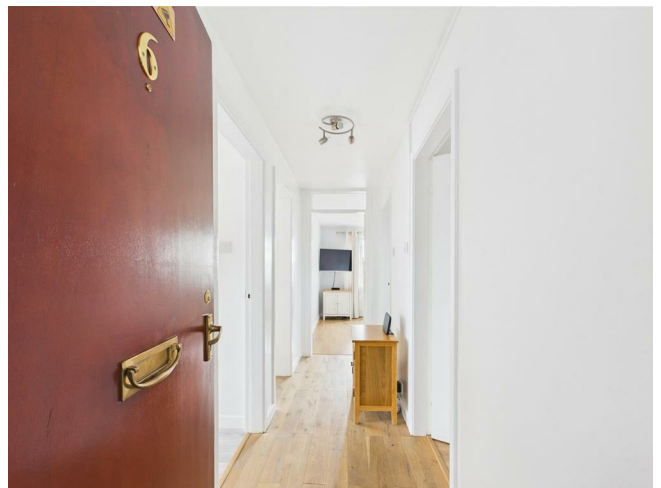
- FULLY RENOVATED TOP FLOOR APARTMENT
- 2 DOUBLE BEDROOMS
- ELEVATED VIEWS
- PARKING
- LENGTHY LEASE
- FABULOUS FIRST TIME BUY OR INVESTMENT
- ESTIMATED RENTAL INCOME OF £850-£900PCM
- **VIEWINGS AVAILABLE 7 DAYS A WEEK**

Description

****FULLY REFURBISHED AND WELL PRESENTED TOP FLOOR 2 BEDROOM APARTMENT IN POPULAR LOCATION****

Internally boasting 2 good sized bedrooms, generous lounge, fully fitted kitchen/ diner, family bathroom with shower and multiple storage cupboards. Outside the property benefits from well kept shared areas and parking.

The property would make a fabulous first time buy, bolt hole or investment with an estimated monthly rental income of £850-£900pcm.



Front

The property is approached via a well kept shared entrance with parking.

Hallway

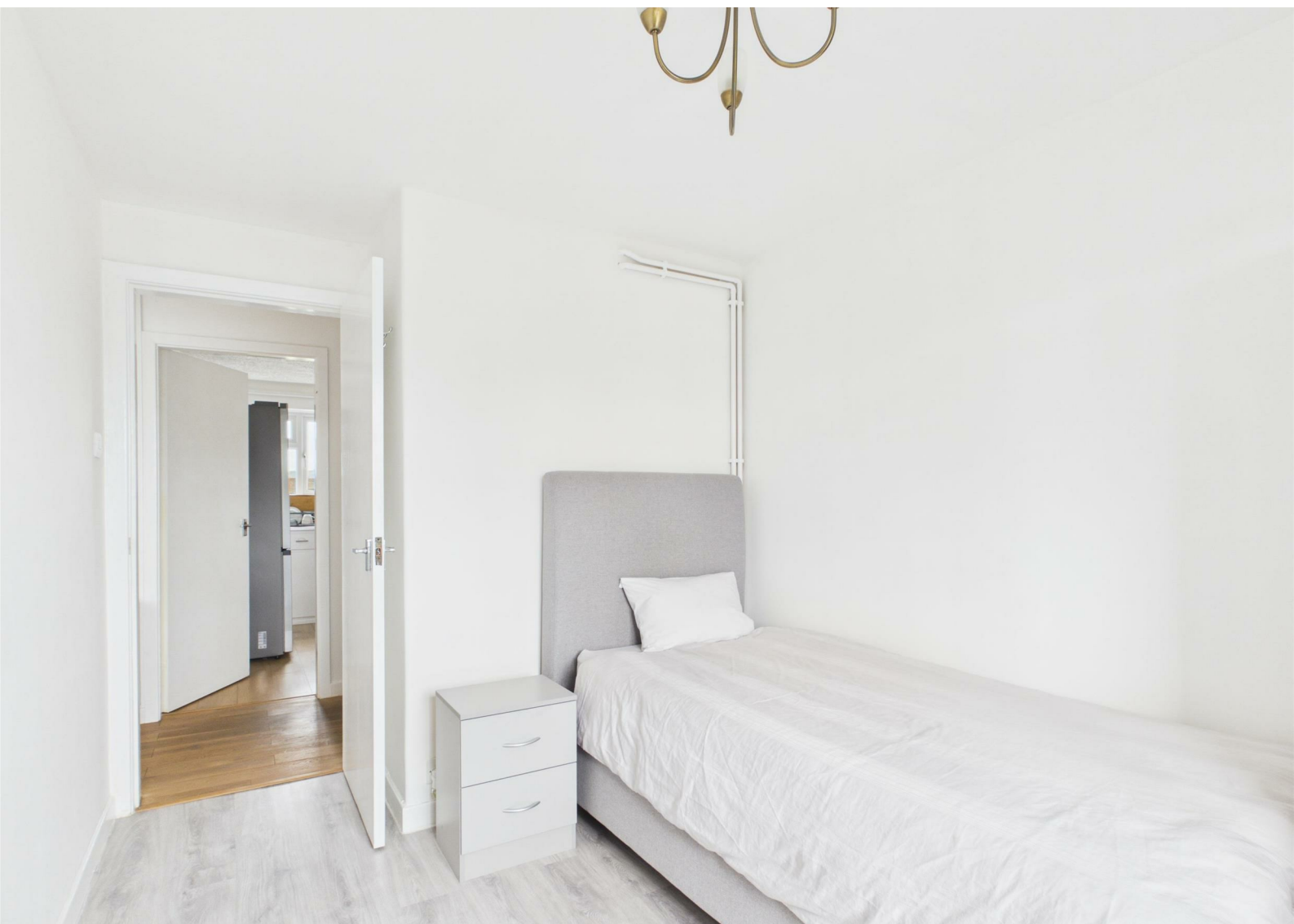
Wood affect vinyl flooring underfoot, integrated storage cupboard and access to both bedrooms, family bathroom, lounge and kitchen diner.

Kitchen / Diner

Mix of wall and base units, surmounted by worktops, splash back tiles and integrated wash hand basin with mixer taps and drainer. Space and plumbing for white goods and oven with hob over. UPVC DG windows to front aspect., radiator, wood affect vinyl flooring and dining area.

Lounge

Dual aspect - UPVC DG windows to rear and side aspects. Wood affect vinyl flooring underfoot and radiator.







Bedroom 1

Wood affect vinyl flooring underfoot, integrated double wardrobe and vanity unit, radiator and UPVC DG windows to rear aspect.

Bedroom 2

Wood affect vinyl flooring underfoot, radiator and UPVC DG windows to side aspect.

Family Bathroom

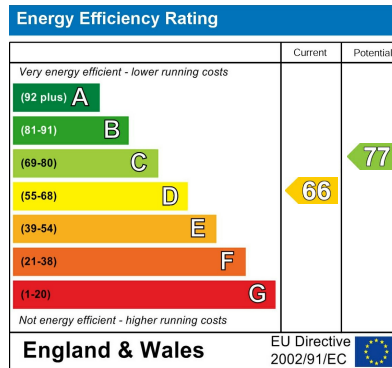
Part tiled walls, wood affect vinyl flooring underfoot. UPVC DG window to front aspect. Bath with shower over, low flush wc, stand alone wash hand basin, wall mounted heated towel rail and integrated storage unit.

Additional Information

Lease Length: 971 Years.

Service Charges: circa £1200 pa.

Floor plans



1 Port Street
Evesham
Worcestershire
WR11 3LA
01386 574 000

sales@cooperandcoestateagents.co.uk