



TOPSHAM ROAD, SW17

£750,000

- End of terrace house
- Potential to develop
- Three bedrooms
- Three reception rooms
- Large family garden
- No onward chain





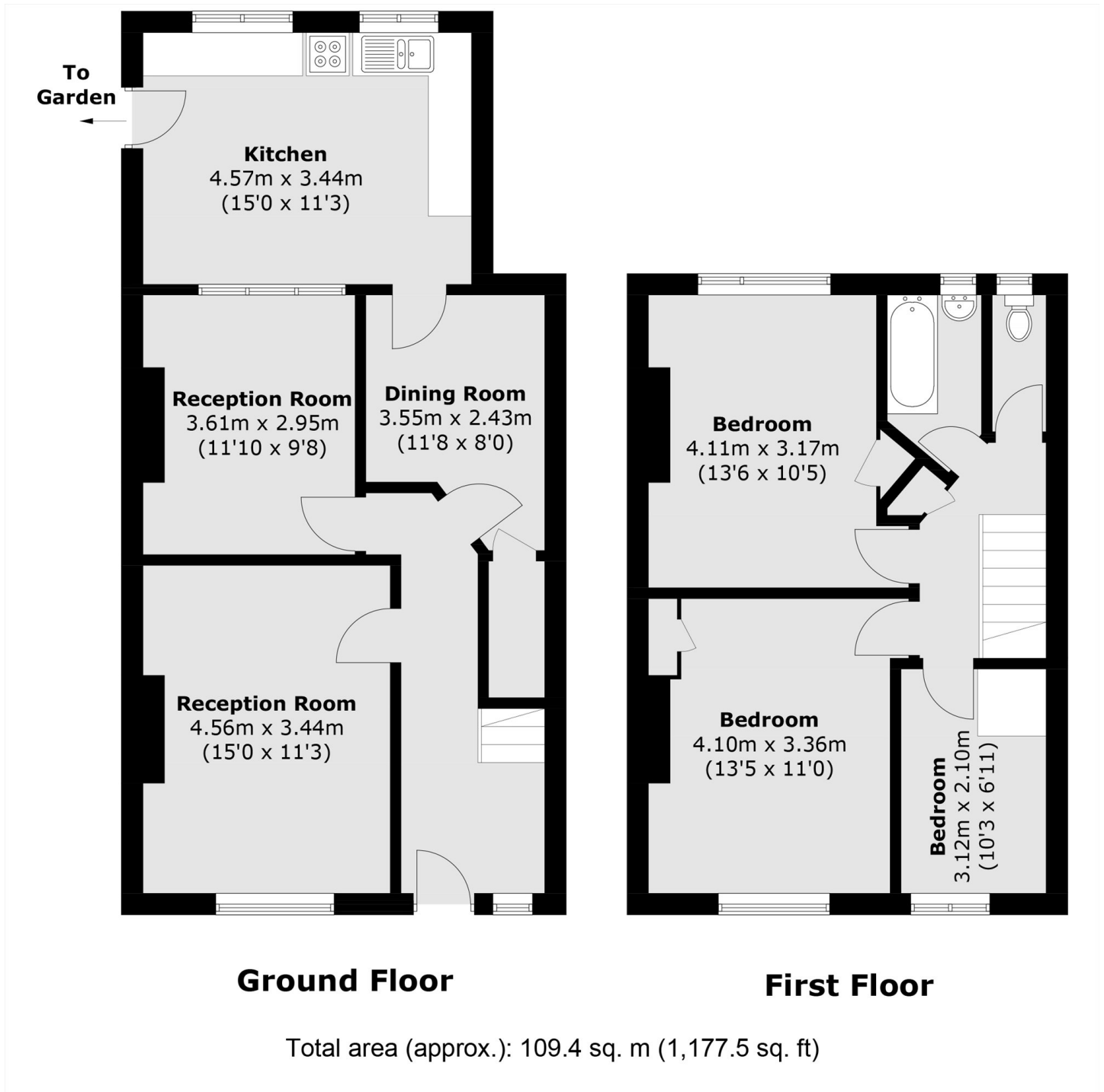
ABOUT THE HOME

A very generously proportioned three bedroom end of terrace house. This property is sold with no onward chain and offers the opportunity to extend and modernise throughout. Internally the property offers an impressive 1,177 sqft. The property offers potential to extend on both the ground first floors to add additional living space and bedrooms. As well as offering a large family garden and the ability to install off street parking.

Topsham Road is a sought after location in the heart of Tooting Bec. Spoilt with sought after primary school's, easy access to Tooting Bec tube station and Tooting Bec Common. As well as an array of popular local bars, restaurants and shopping available at the end of the road.






JACKSONS TOOTING

3 Upper Tooting Road, London,
 SW17 7TS
 Sales: 020 8487 3175
 Lettings: 020 8487 3176

Energy Rating: We aim to make our particulars both accurate and reliable. However they are not guaranteed; nor do they form part of an offer or contract. If you require clarification on any points then please contact us, especially if you're traveling some distance to view. Please note that appliances and heating systems have not been tested and therefore no warranties can be given as to their good working order.