



## Coombe Road, KT3

£2,700 Per calendar month

A spacious and luxurious newly built apartment in the heart of New Malden. Benefitting from two double bedrooms, a large private balcony and tranquil communal rooftop garden.

Castanea Court is an exciting new development in the heart of New Malden Town Centre with its exciting array of shops and amenities. There is also a fast train line with access to London Waterloo in as little as 24 minutes.

### Features

- Brand New Development
- Private Balcony
- Lift Serviced Block
- Close To Amenities
- Two Double Bedrooms
- Underfloor Heating

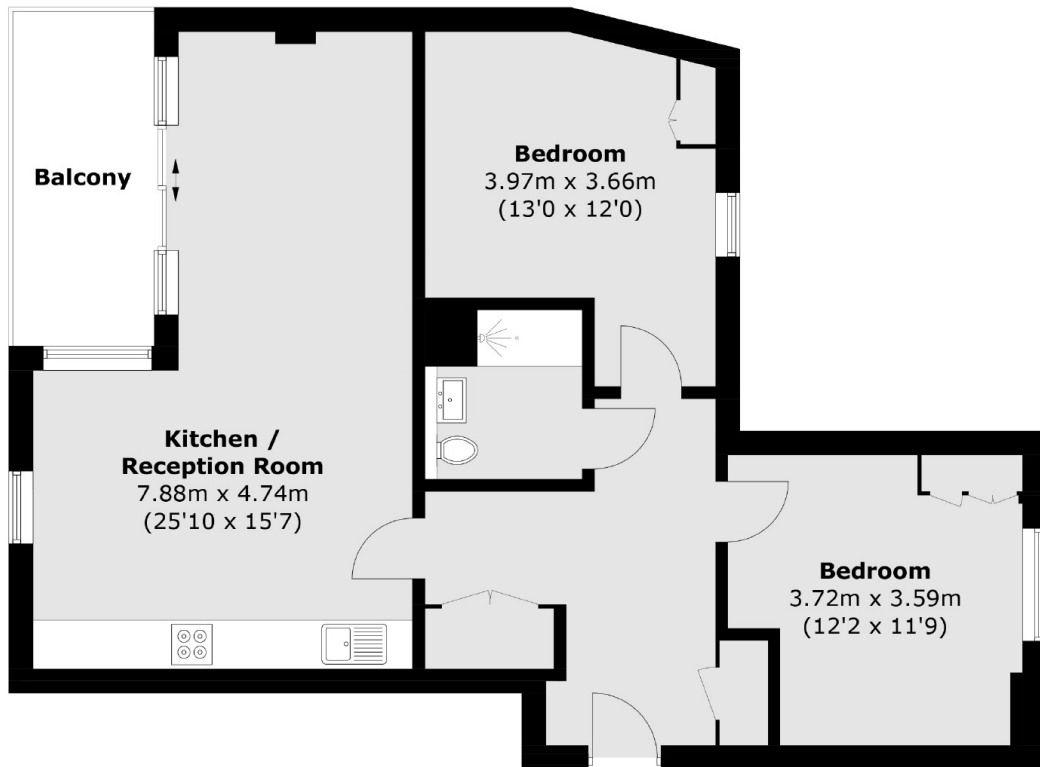


## Coombe Road, KT3

Castanea Court has been crafted with individuality and an urban lifestyle promise. Castanea Court boasts an alluring loft-style feel. Each spacious apartment benefits from extravagant large windows, natural light-filled interiors, energy and cost-efficient underfloor heating, high-spec finish and either a balcony, terrace or winter garden. From infrastructures and amenities to service, Castanea Court is the creation of a holistic approach to design and lifestyle. Castanea Court elevates urban lifestyle in suburban living. Rarely does a space provide warmth and comfort like this.



Coombe Road,  
New Malden, KT3



Total area (approx.): 74.8 sq. m (805.1 sq. ft)  
Balcony : 7.3 sq. m (78.6 sq. ft)